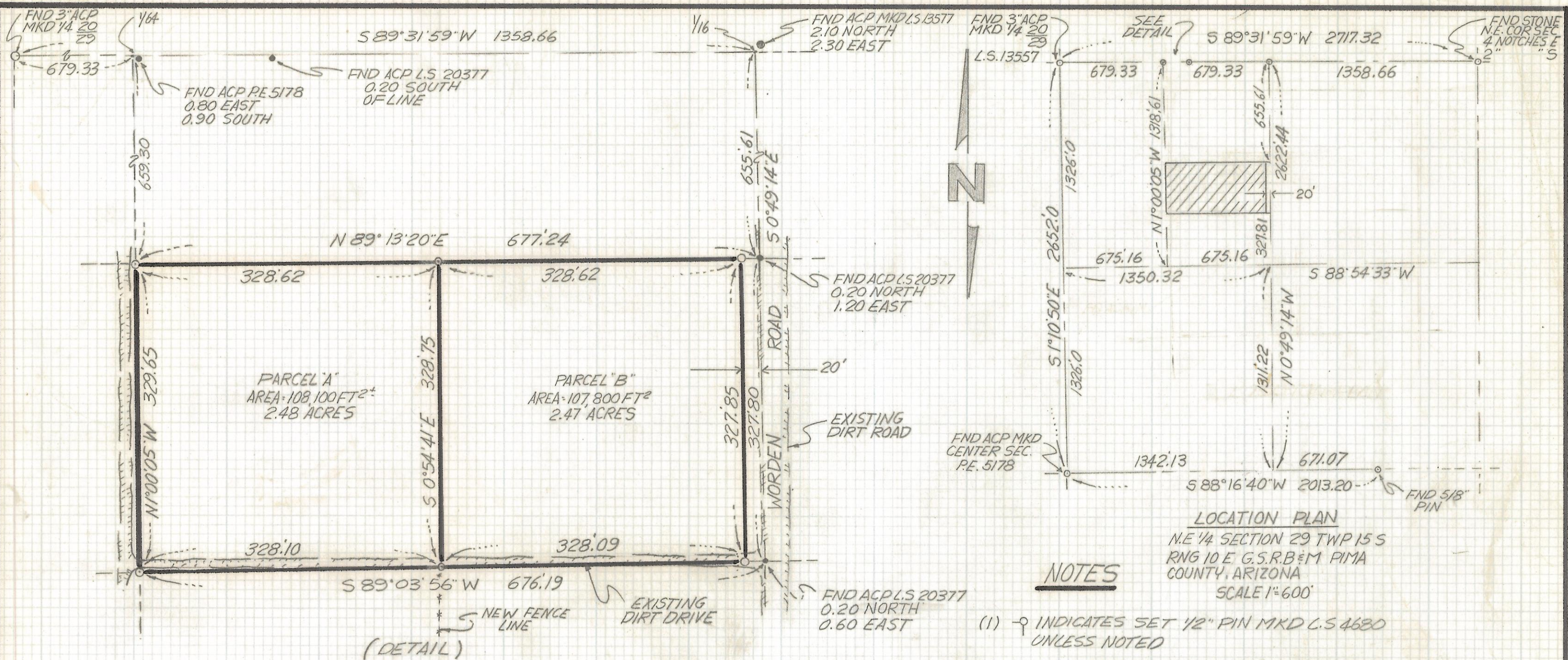


DISCLAIMER:

This unrecorded Record of Survey was donated to the City of Tucson. The City of Tucson provides this data for your personal use "as is." Additionally, the City of Tucson provides this information with the understanding that it is not guaranteed to be accurate, correct or complete and conclusions drawn from such information are the responsibility of the user.



RESULTS OF SURVEY

OF A PORTION OF THE SOUTHEAST QUARTER NORTHWEST QUARTER, NORTHEAST QUARTER SECTION 29 TOWNSHIP 15 SOUTH RANGE 10 EAST GILA AND SALT RIVER BASE AND MERIDIAN PIMA COUNTY ARIZONA



NOTES

- (1) ϕ INDICATES SET 1/2" PIN MKD L.S. 4680 UNLESS NOTED
- (2) BASIS OF BEARING NORTH LINE OF N.E. 1/4 29-15-10 S 89°31'59"W PER RECORD OF SURVEY BY SASCO DATED 10-25-83 RECORDED IN BOOK 4 AT PAGE 41
- (3) SEE SECTION SURVEY BY RE 5178 DATED 1965
- (4) SEE RECORD OF SURVEYS BOOK 4 PAGES 41, 43, 44 AND 54

LOCATION PLAN
 N.E. 1/4 SECTION 29 TWP 15 S
 RNG 10 E G.S.R.B. & M PIMA
 COUNTY, ARIZONA
 SCALE 1"=600'

Z-2017-471

REVISIONS		DATE
ROBERT F. MELLEN		DATE: 6-19-91
REGISTERED LAND SURVEYOR		DR BY: EMT CK BY: RFM
1250 W. MOHAVE ST. TUCSON, ARIZONA		JOB NO. 91-78
(602) 888-1012	SCALE: 1"=100'	SHEET 1 OF 1

RFM