

# **DISCLAIMER:**

**This unrecorded Record of Survey was donated to the City of Tucson. The City of Tucson provides this data for your personal use "as is." Additionally, the City of Tucson provides this information with the understanding that it is not guaranteed to be accurate, correct or complete and conclusions drawn from such information are the responsibility of the user.**

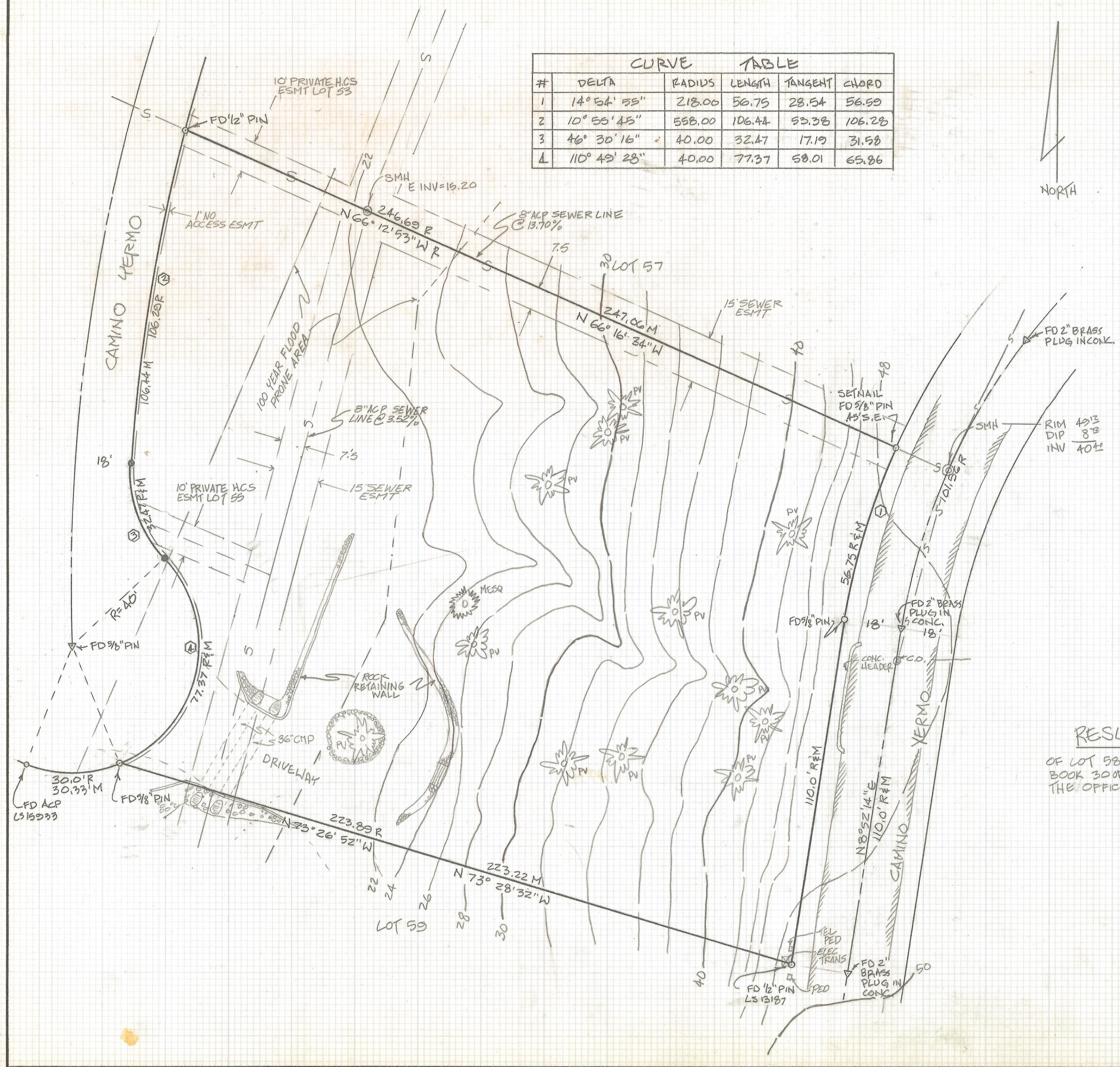


CURVE TABLE					
#	DELTA	RADIUS	LENGTH	TANGENT	CHORD
1	14° 54' 55"	218.00	56.75	28.54	56.59
2	10° 55' 45"	558.00	106.44	53.38	106.28
3	46° 30' 16"	40.00	32.47	17.19	31.58
L	110° 49' 28"	40.00	77.37	58.01	65.86

NOTES:

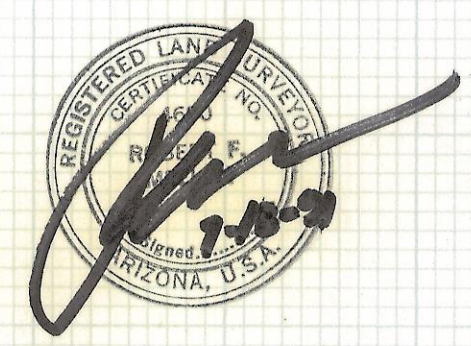
- 1) ♀ INDICATES SET 1/2" STEEL PIN MKD LS4680
- 2) ♀ INDICATES FOUND LOT CORNER AS MARKED
- 3) R - MAP RECORD
- 4) M - MEASURED
- 5) BENCHMARK - SEWER MANHOLE AT NE COR. LOT 58 (MH#12 SEE PCLM PLAN BY OPW NO. 77117-107-109) ELEV. S. INV. = 2640±
- 6) CONTOUR INT. = 2'

NORTH



RESULTS OF SURVEY

OF LOT 58 OF VISTA CIUDAD AS SHOWN IN BOOK 30 OF MAPS AND PLATS AT PAGE 93 IN THE OFFICE OF THE PIMA COUNTY RECORDER, PIMA COUNTY, ARIZONA.



Z-2017-477

ROBERT F. MELLEN  
REGISTERED LAND SURVEYOR  
TUCSON, ARIZONA  
JOB 31-37