

# **DISCLAIMER:**

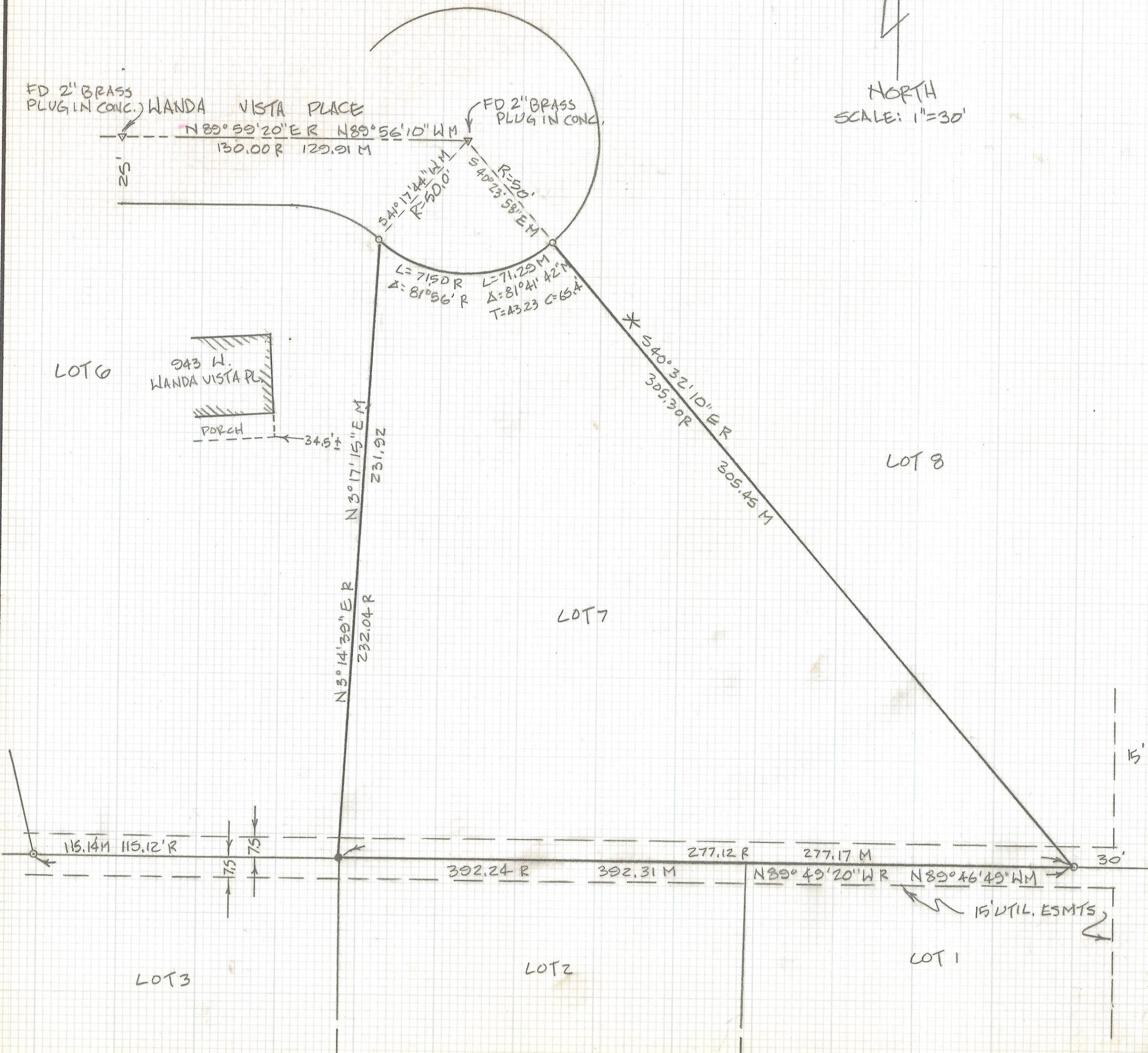
**This unrecorded Record of Survey was donated to the City of Tucson. The City of Tucson provides this data for your personal use "as is." Additionally, the City of Tucson provides this information with the understanding that it is not guaranteed to be accurate, correct or complete and conclusions drawn from such information are the responsibility of the user.**



NOTES:

- 1) ♀ INDICATES FOUND 1/2" PIN
- 2) ♂ INDICATES SET 1/2" PIN MKD LS 4680
- 3) R - MAP OR DEED RECORD
- 4) M - MEASURED
- 5) \* BASIS OF BEARINGS

NORTH  
SCALE: 1"=30'



RESULTS OF SURVEY

OF LOT 7 CASAS CANANEA AS SHOWN IN BOOK 16 OF MAPS AND PLATS AT PAGE 49 IN THE OFFICE OF THE PIMA COUNTY RECORDER, PIMA COUNTY, ARIZONA.



Z-2017-480

ROBERT F. MELLEN  
REGISTERED LAND SURVEYOR  
TUCSON, ARIZONA  
JOB 91-91