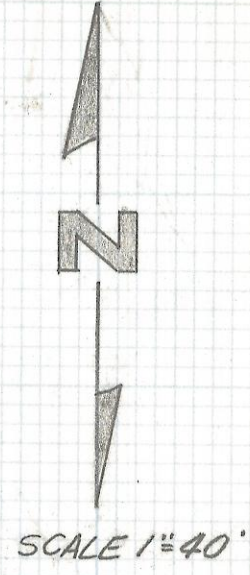
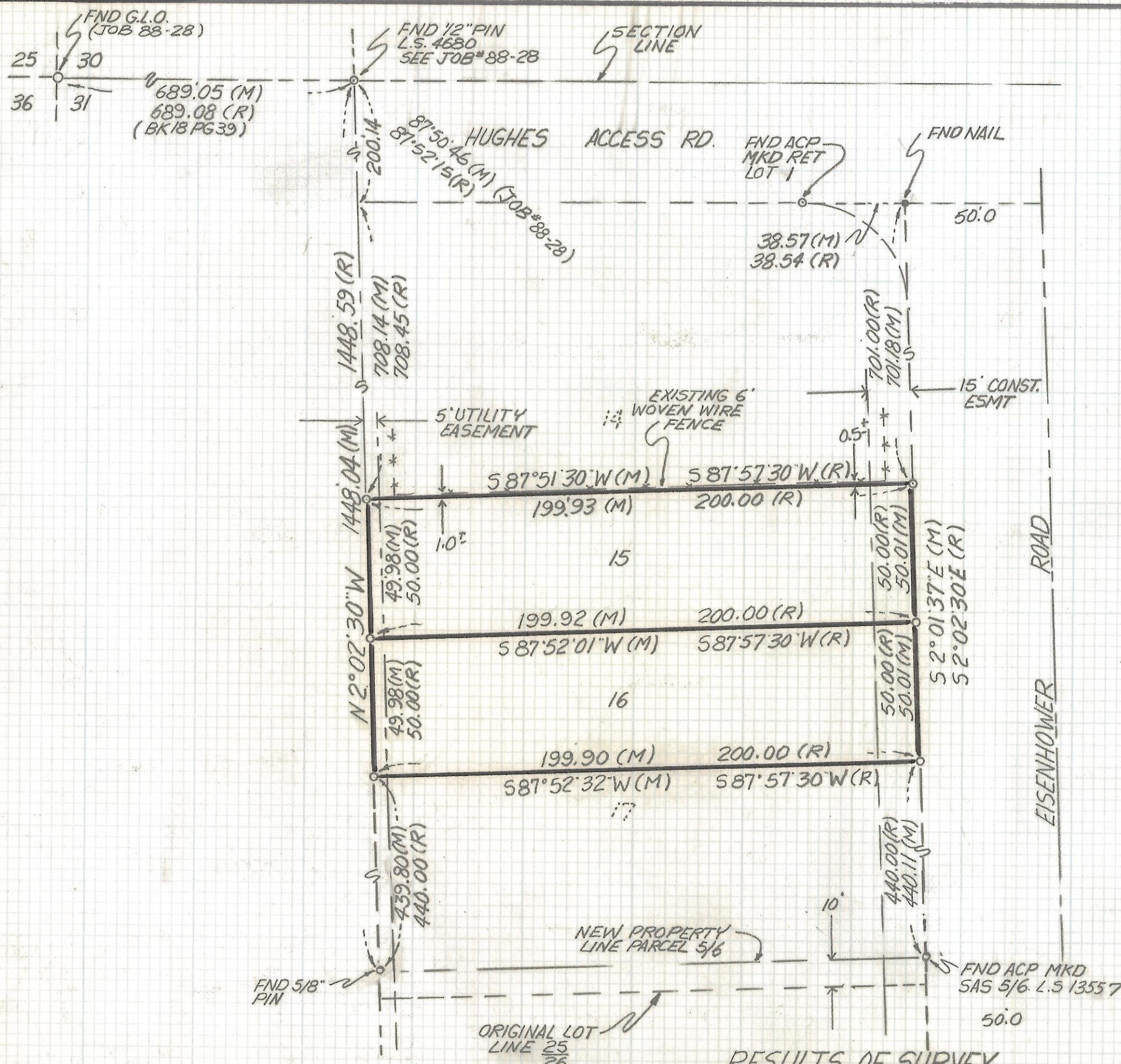


DISCLAIMER:

This unrecorded Record of Survey was donated to the City of Tucson. The City of Tucson provides this data for your personal use "as is." Additionally, the City of Tucson provides this information with the understanding that it is not guaranteed to be accurate, correct or complete and conclusions drawn from such information are the responsibility of the user.

SOUTHERN PACIFIC RAILROAD



- NOTES**
- (1) ♀ INDICATES SET 1/2" PIN MKD L.S. 4680 UNLESS NOTED
 - (2) M- MEASURED
 - (3) R- MAP OR DEED RECORD
 - (4) SEE DOCKET BOOK 4726 PAGE 526 FOR AGREEMENT & RE-DIVISION OF THIS SUBDIVISION
 - (5) SEE E.H. BUCK LEWIS P.E 7076 JOB# 72-123



RESULTS OF SURVEY

OF LOTS 15 AND 16 SOUTHSIDE INDUSTRIAL SITES AS RECORDED IN BOOK 18 OF MAPS AND PLATS AT PAGE 39 IN THE OFFICE OF THE PIMA COUNTY RECORDER PIMA COUNTY, ARIZONA

Z-2017-488

ROBERT F. MELLEN
 REGISTERED LAND SURVEYOR
 TUCSON, ARIZONA
 JOB# 91-106