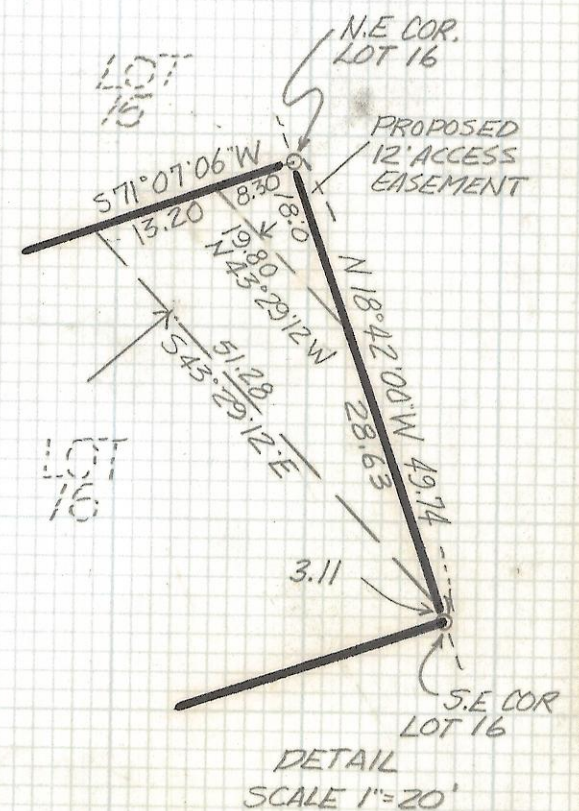
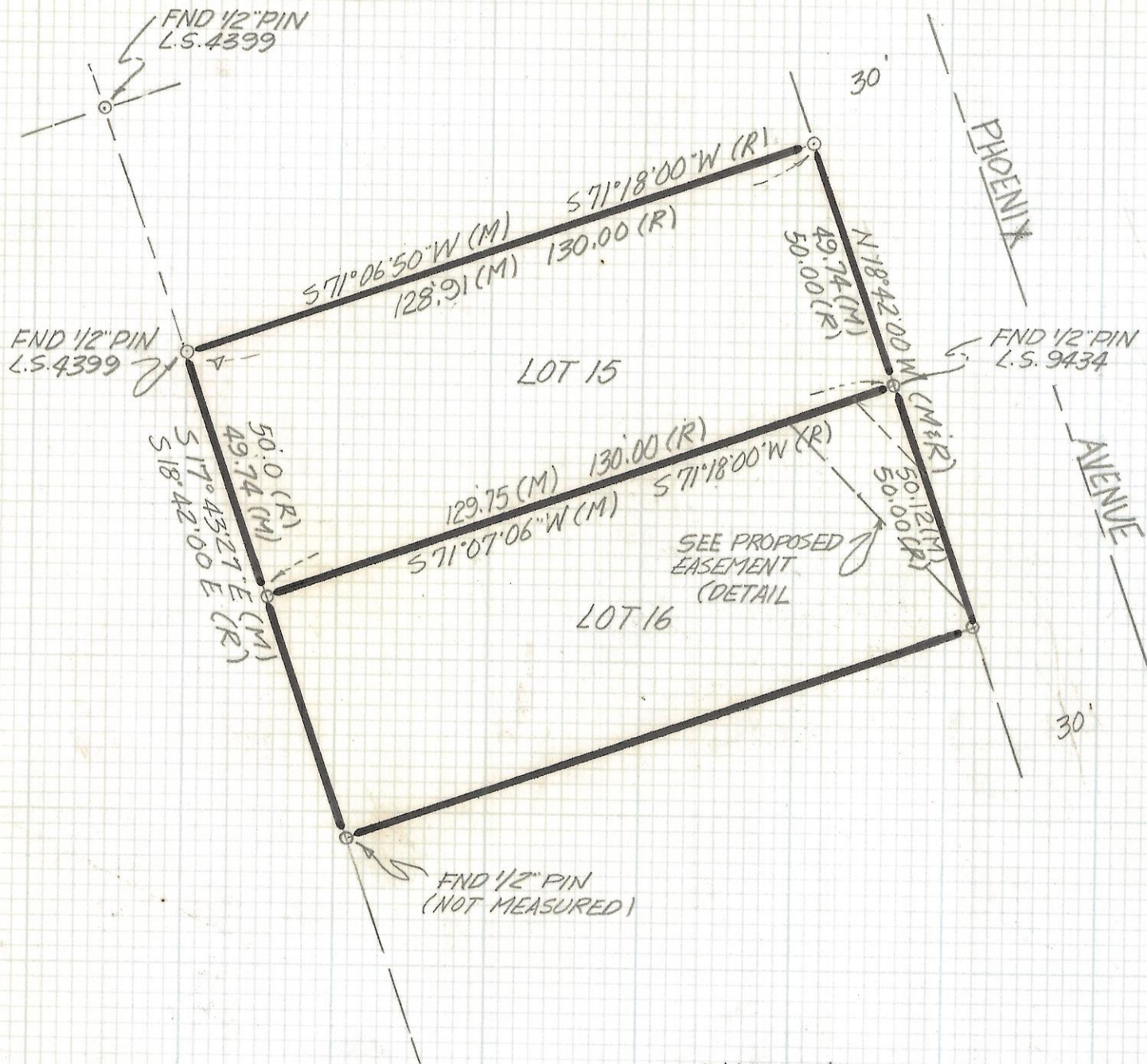


DISCLAIMER:

This unrecorded Record of Survey was donated to the City of Tucson. The City of Tucson provides this data for your personal use "as is." Additionally, the City of Tucson provides this information with the understanding that it is not guaranteed to be accurate, correct or complete and conclusions drawn from such information are the responsibility of the user.



SKETCH
FOR
LEGAL DESCRIPTION

FOR LOTS 15 AND 16 BLOCK 9 OF SUMMERHAVEN
SUBDIVISION AS RECORDED IN BOOK 4 OF MAPS
AND PLATS AT PAGE 99 IN THE OFFICE OF THE
PIMA COUNTY RECORDER PIMA COUNTY, ARIZONA

NOTES

- (1) ♀ INDICATES SET 1/2" PIN L.S. 4680 UNLESS NOTED
- (2) M- MEASURED
- (3) R- MAP OR DEED RECORD
- (4) SEE SURVEY BY FRED RODRIGUEZ DATED 8-18-89 OF LOTS 15 AND 16 DRAWING N° 0102



ROBERT F. MELLEN
REGISTERED LAND SURVEYOR
TUCSON, ARIZONA
JOB # 91-110

Z-2017-492