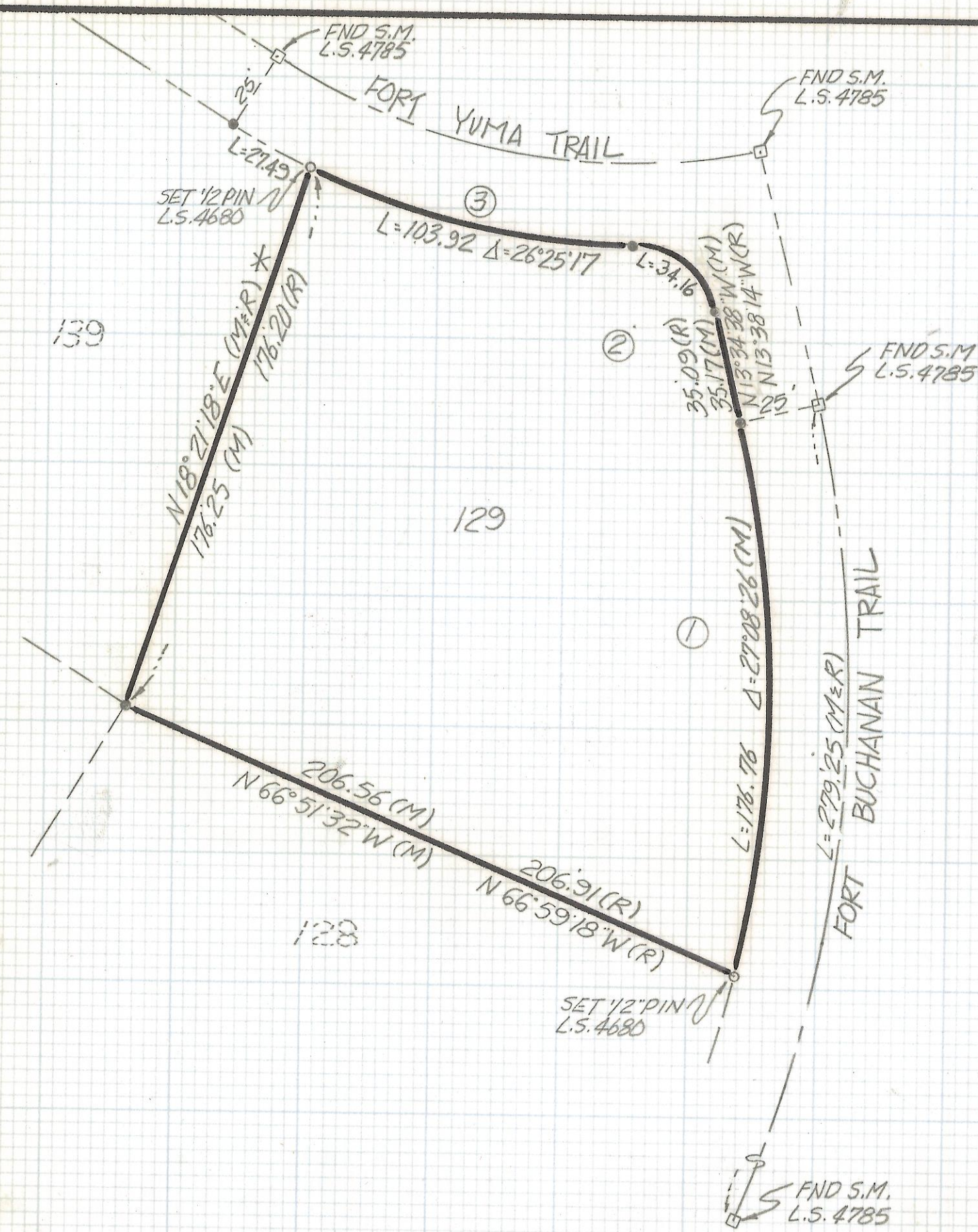
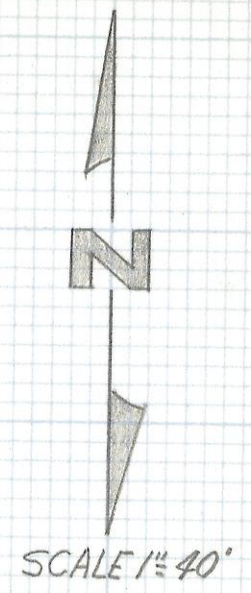


DISCLAIMER:

This unrecorded Record of Survey was donated to the City of Tucson. The City of Tucson provides this data for your personal use "as is." Additionally, the City of Tucson provides this information with the understanding that it is not guaranteed to be accurate, correct or complete and conclusions drawn from such information are the responsibility of the user.



CURVE DATA					
NO	RADIUS	DELTA	LENGTH	TANGENT	CHORD
1M	373.15	27°08'26"	176.76	90.07	175.11
2M	24.96	78°24'22"	34.16	20.36	31.55
3M	225.35	26°25'17"	103.92	52.90	103.00
1R	375.00	27°00'00"	176.71	90.03	175.08
2R	25.0	78°27'47"	34.24	20.41	31.62
3R	225.0	26°27'47"	103.92	52.90	103.0



NOTES

- (1) —• INDICATES FOUND 5/8" PIN UNLESS NOTED
- (2) M- MEASURED
- (3) R- MAP OR DEED RECORD
- (4)* BASIS OF BEARINGS N 18° 21' 18" E WESTERLY LINE LOT 129
- (5) THERE ARE NO ENCROACHMENTS ON ANY PROPERTY LINES

RESULTS OF SURVEY

OF LOT 129 SUNRISE TERRITORY VILLAGE AS RECORDED IN BOOK 24 OF MAPS AND PLATS AT PAGE 31 IN THE OFFICE OF THE PIMA COUNTY RECORDER PIMA COUNTY ARIZONA



Z-2017-497
 ROBERT F. MELLEN
 REGISTERED LAND SURVEYOR
 TUCSON, ARIZONA
 JOB# 91-116