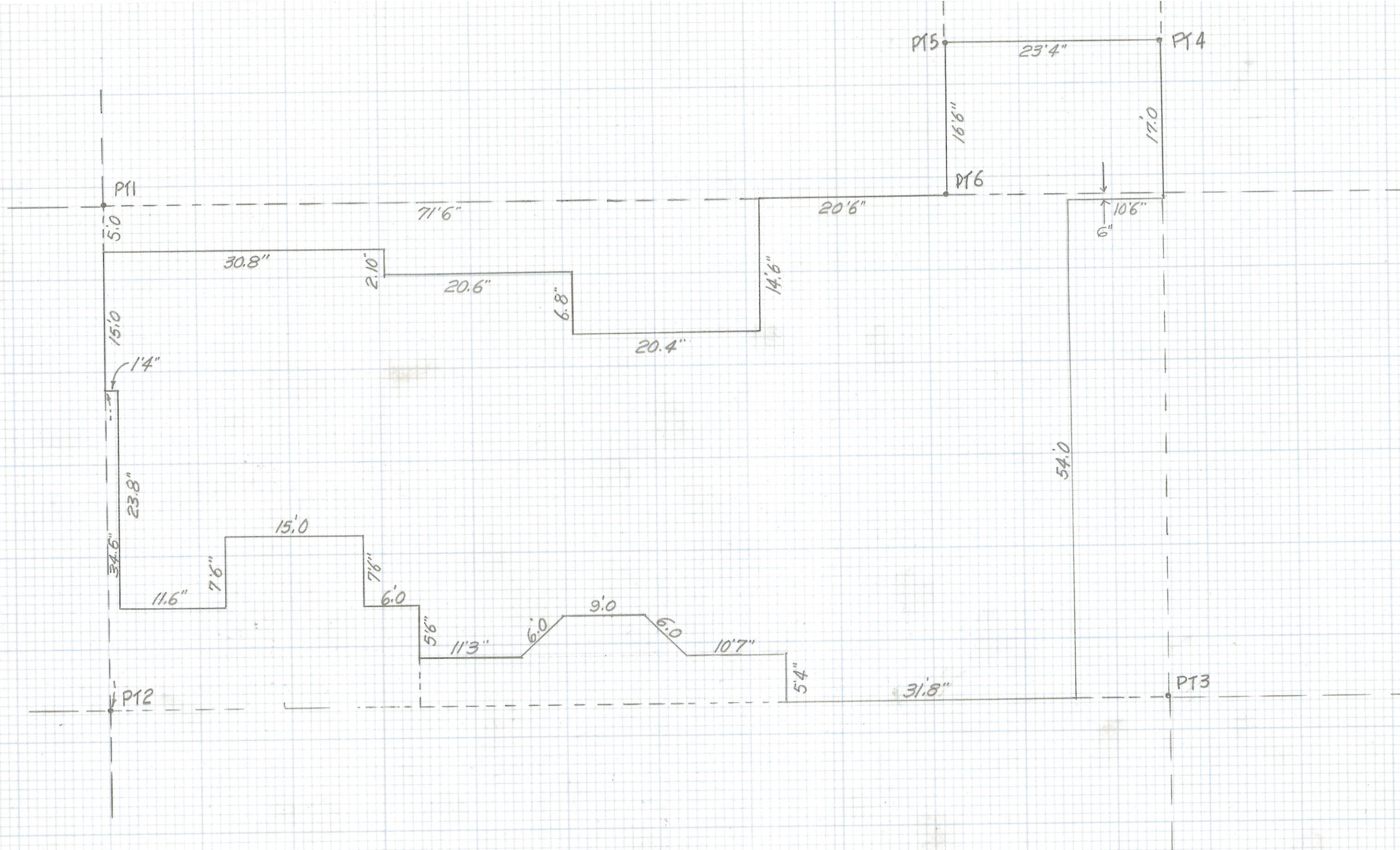


DISCLAIMER:

This unrecorded Record of Survey was donated to the City of Tucson. The City of Tucson provides this data for your personal use "as is." Additionally, the City of Tucson provides this information with the understanding that it is not guaranteed to be accurate, correct or complete and conclusions drawn from such information are the responsibility of the user.



SKETCH
OF

HORN RESIDENCE ON LOT 6 LOS CERROS DE KINO
 RECORDED IN BOOK 27 OF MAPS AND PLATS AT PAGE
 34 IN THE OFFICE OF THE PIMA COUNTY RECORDER
 PIMA COUNTY, ARIZONA

Z-2017-501

ROBERT F. MELLETT
 REGISTERED LAND SURVEYOR
 TUCSON, ARIZONA
 JOB # 91-121