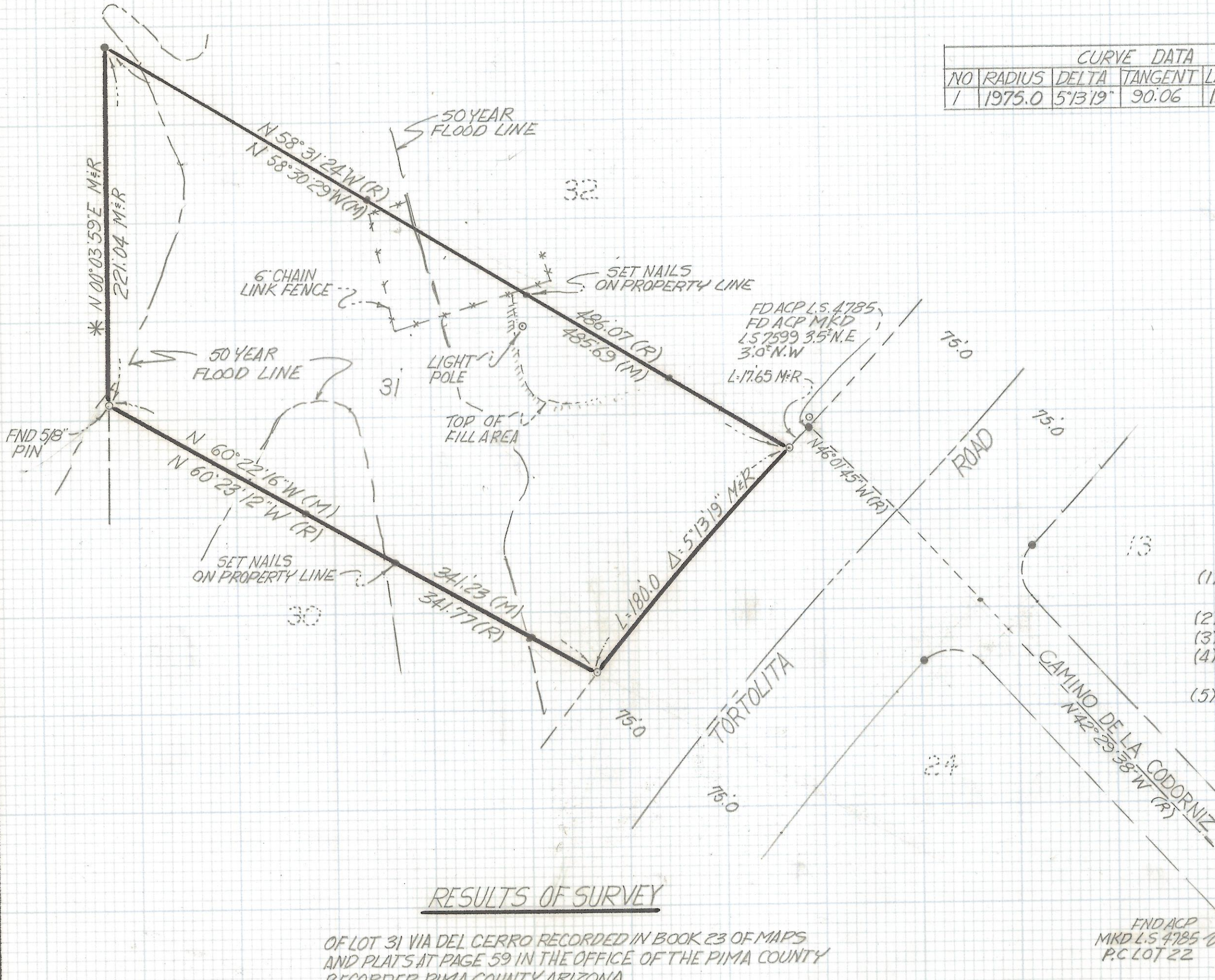


# **DISCLAIMER:**

**This unrecorded Record of Survey was donated to the City of Tucson. The City of Tucson provides this data for your personal use "as is." Additionally, the City of Tucson provides this information with the understanding that it is not guaranteed to be accurate, correct or complete and conclusions drawn from such information are the responsibility of the user.**

CURVE DATA					
NO	RADIUS	DELTA	TANGENT	LENGTH	CHORD
1	1975.0	5°13'19"	90.06	180.00	179.94



NOTES

- (1) → INDICATES SET 1/2" PIN MKD L.S. 4680 UNLESS NOTED
- (2) M-MEASURED
- (3) R- MAP OR DEED RECORD
- (4) ● INDICATES ALUMINUM CAPPED PIN MKD L.S. 4785 FOUND
- (5) \* BASIS OF BEARINGS WEST LINE OF LOT 31 N00°03'59"E

RESULTS OF SURVEY

OF LOT 31 VIA DEL CERRO RECORDED IN BOOK 23 OF MAPS AND PLATS AT PAGE 59 IN THE OFFICE OF THE PIMA COUNTY RECORDER PIMA COUNTY, ARIZONA

FND ACP MKD L.S. 4785 P.C. LOT 22

ROBERT F. MELLEN  
REGISTERED LAND SURVEYOR  
TUCSON, ARIZONA  
JOB# 91-122