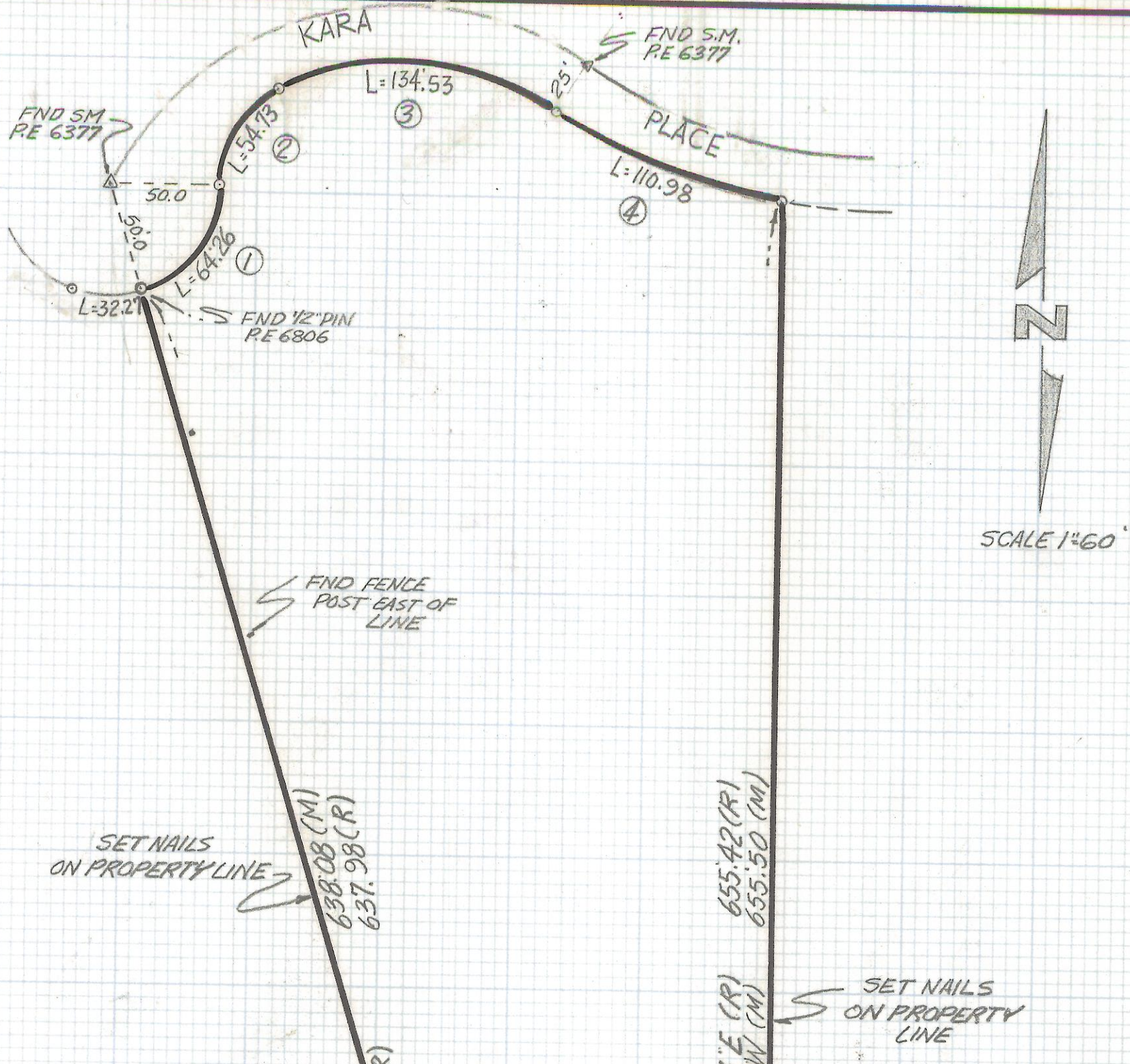


DISCLAIMER:

This unrecorded Record of Survey was donated to the City of Tucson. The City of Tucson provides this data for your personal use "as is." Additionally, the City of Tucson provides this information with the understanding that it is not guaranteed to be accurate, correct or complete and conclusions drawn from such information are the responsibility of the user.



SET NAILS ON PROPERTY LINE

SET NAILS ON PROPERTY LINE

NOTES

- (1) ♀ INDICATES FOUND 1/2 PIN MKD PE.6377 UNLESS NOTED
- (2) M- MEASURED
- (3) R- MAPOR DEED RECORD
- (4) * BASIS OF BEARINGS WESTERLY LINE LOT 11 N 16°44'36"W

CURVE DATA					
NO	RADIUS	DELTA	TANGENT	LENGTH	CHORD
①	50'	73°38'28	37.43	64.26	59.93
②	50'	62°43'13	30.47	54.73	52.04
③	125'	61°39'50	74.61	134.53	128.13
④	265	23°59'42	56.32	110.98	110.17

108.50 (R)
108.69 (M)
N 89°59'09"E (M)
N 89°59'07"W (R)

RESULTS OF SURVEY

OF LOT 11 TANGERINE MEADOWS RECORDED IN BOOK 26 OF MAPS AND PLATS AT PAGE 21 IN THE OFFICE OF THE PIMA COUNTY RECORDER PIMA COUNTY ARIZONA



ROBERT F. MELLEN
REGISTERED LAND SURVEYOR
TUCSON, ARIZONA
JOB# 91-129

Z-2018-002Z-2017-508