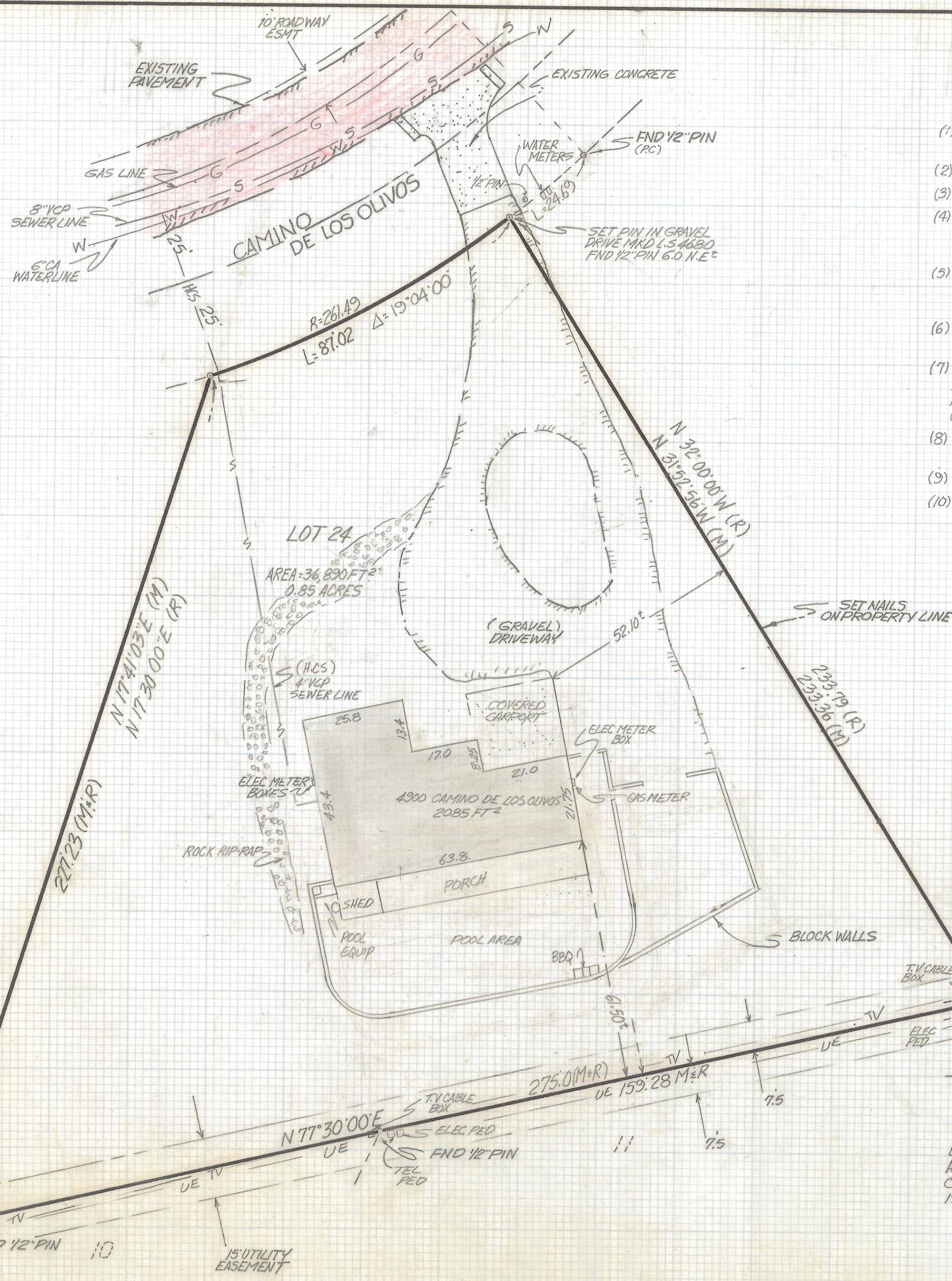


# **DISCLAIMER:**

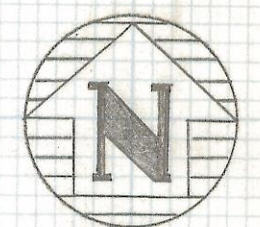
**This unrecorded Record of Survey was donated to the City of Tucson. The City of Tucson provides this data for your personal use "as is." Additionally, the City of Tucson provides this information with the understanding that it is not guaranteed to be accurate, correct or complete and conclusions drawn from such information are the responsibility of the user.**





# NOTES

- (1) - 9 INDICATES 1/2" STEEL PIN MARKED L.S. 4680 SET UNLESS NOTED
- (2) R - MAP OR DEED RECORD (BEARING OR DISTANCE)
- (3) M - MEASURED (BEARING OR DISTANCE)
- (4) BASIS OF BEARINGS NORTH 77°30'00" EAST SOUTH LINE OF LOT 24 SKYLINE BEL AIR ESTATES BOOK 17 PAGE 93 OF MAPS AND PLATS
- (5) THIS SURVEY IS BASED ON TITLE REPORT CASE NO. 228,849 JLM BY LAWYERS TITLE INSURANCE CORPORATION DATED 11-5-91 AMENDED 11-11-91
- (6) THE ONLY EASEMENT REVEALED ON THE TITLE REPORT IS THE 15' UTILITY EASEMENT SHOWN ON THIS SURVEY
- (7) ALL UTILITIES ARE LOCATED FROM FIELD OBSERVATION AND AVAILABLE MAPS AND ARE APPROXIMATE SEE PLAN PCWMM PLAN N° 205 SHEET 10 AND 27 (WATER, SEWER GAS ELECTRIC)
- (8) THERE IS NO OBSERVABLE EVIDENCE OF CEMETERIES ON THIS PROPERTY
- (9) U.E. UNDERGROUND ELECTRIC CABLE
- (10) T.V. UNDERGROUND T.V. CABLE



SCALE 1"=20'

## CERTIFICATION:

TO: LAWYERS TITLE A ARIZONA CORPORATION ALLEN CAPLAN AND TRANSPACIFIC MORTGAGE A ARIZONA CORPORATION  
THIS IS TO CERTIFY THAT THIS MAP OR PLAT AND THE SURVEY ON WHICH IT IS BASED WERE MADE IN ACCORDANCE WITH THE "MINIMUM" STANDARD DETAIL REQUIREMENTS FOR ATLA/ACSM "LAND TITLE SURVEYS" JOINTLY ESTABLISHED AND ADOPTED BY ATLA AND ACSM IN 1988 AND MEETS THE ACCURACY REQUIREMENTS OF A CLASS B SURVEY AS DEFINED THEREIN.

ROBERT F. MELLEN  
REGISTERED LAND SURVEYOR  
#4680 STATE OF ARIZONA

## RESULTS OF ALTA / ACSM SURVEY (CLASS B)

### AND LEGAL DESCRIPTION OF

LOT 24 OF SKYLINE BEL AIR ESTATES, A SUBDIVISION OF PIMA COUNTY, ARIZONA, ACCORDING TO THE MAP OR PLAT THEREOF OF RECORD IN THE OFFICE OF THE COUNTY RECORDER OF PIMA COUNTY, ARIZONA IN BOOK 17 OF MAPS AND PLATS AT PAGE 93 THEREOF.

Z-2018-010  
Z-2017-516

REVISIONS	DATE
ROBERT F. MELLEN REGISTERED LAND SURVEYOR 1250 W. MOHAVE ST. TUCSON, ARIZONA (602) 888-1012	DATE: 11-14-91 DR BY: EMT CK BY: R.F.M. JOB NO. 91-142 SHEET 1 OF 1

**RFM**