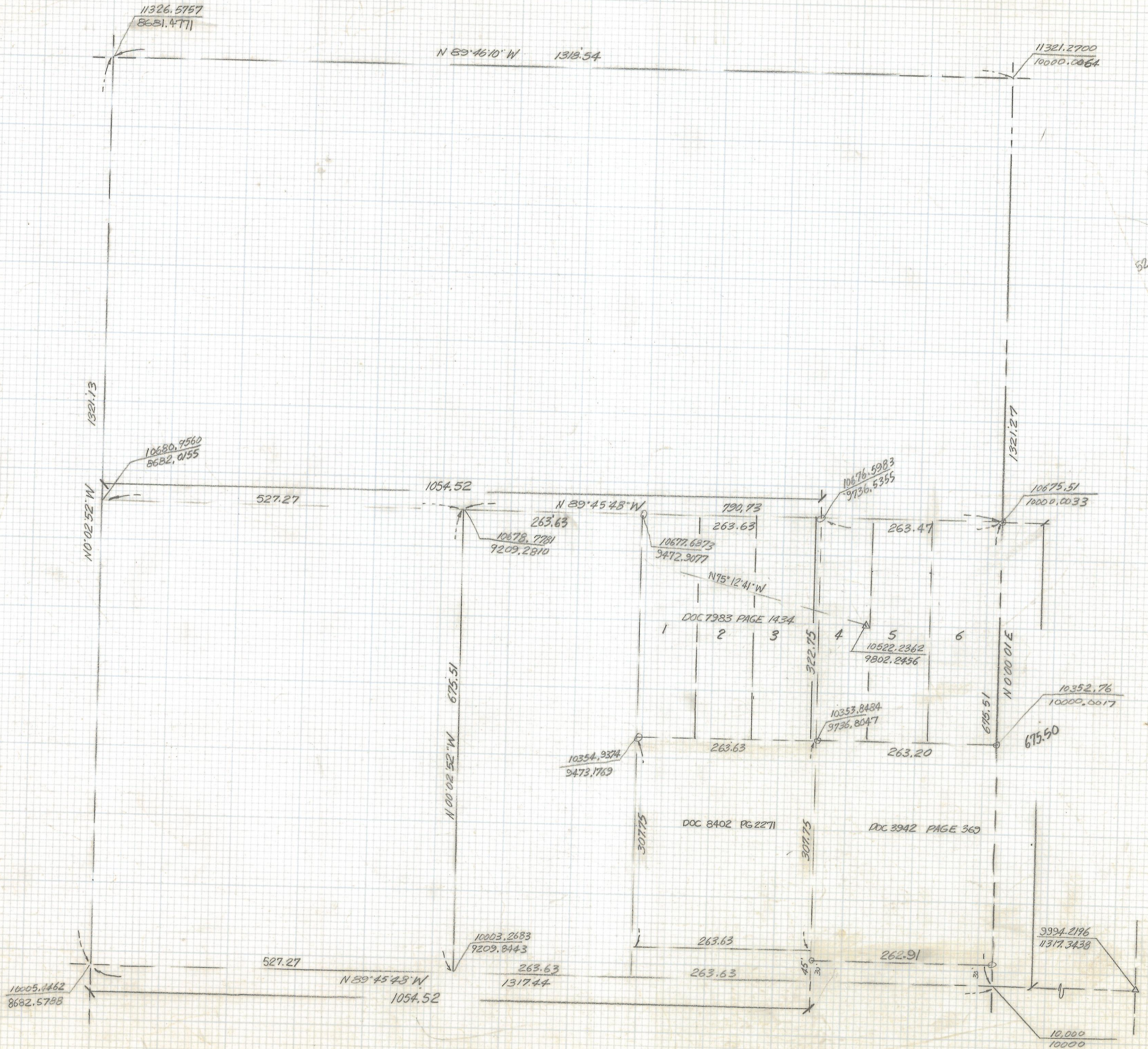


# **DISCLAIMER:**

**This unrecorded Record of Survey was donated to the City of Tucson. The City of Tucson provides this data for your personal use "as is." Additionally, the City of Tucson provides this information with the understanding that it is not guaranteed to be accurate, correct or complete and conclusions drawn from such information are the responsibility of the user.**



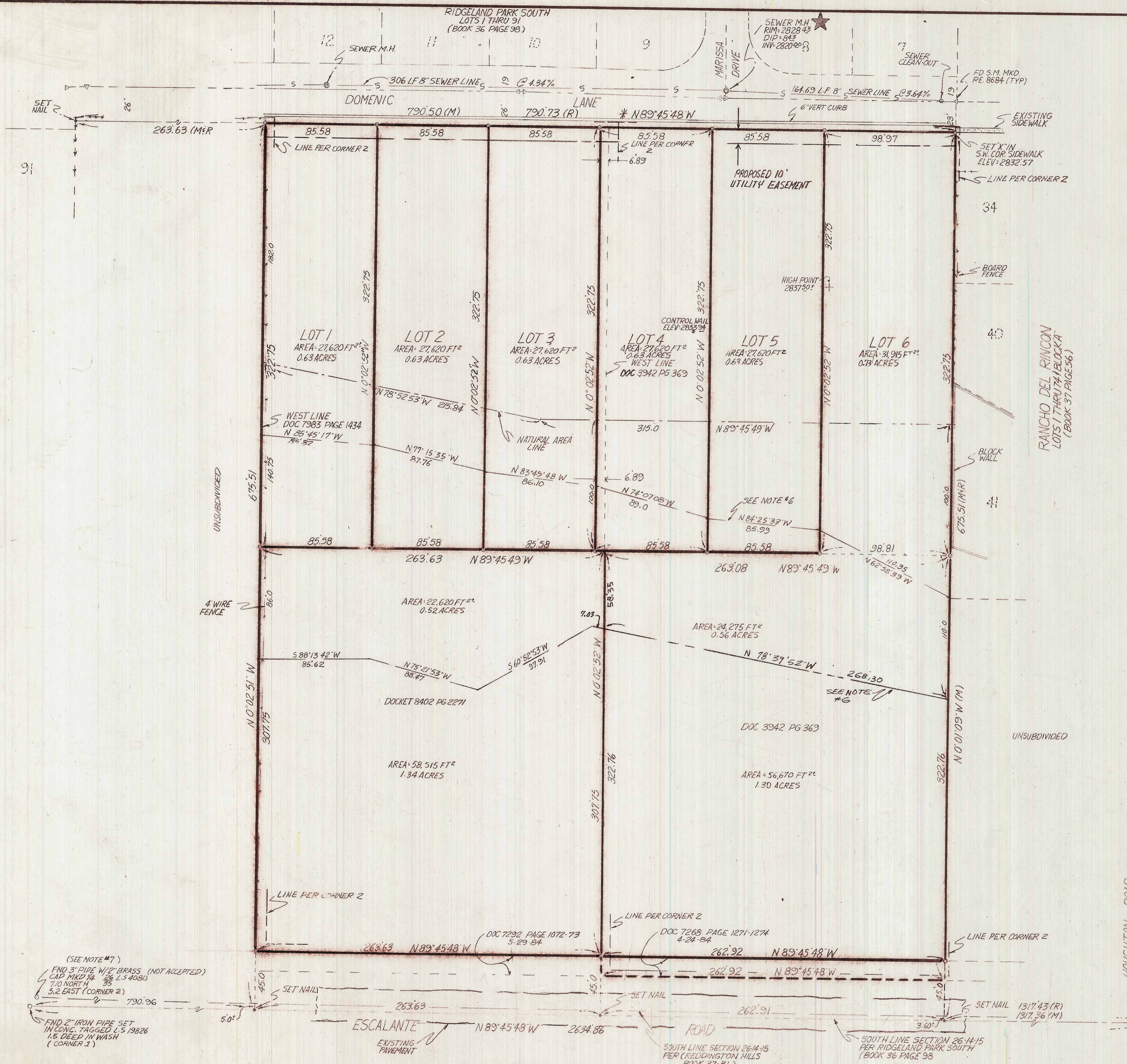
526.87

10005.4462  
8682.5788

SCALE 1"=100'

JOB #91-148

Z-2018-012  
Z-2017-518 1/2



- NOTES**
- (1) 9 INDICATES SET 1/2" PIN MKD L.S. 4680 UNLESS NOTED
  - (2) M- MEASURED
  - (3) R- MAP OR DEED RECORD
  - (4) \* BASIS OF BEARINGS N89°45'48" W PER SOUTH LINE OF RIDGELAND PARK SOUTH BOOK 36 PAGE 98 OF MAPS AND PLATS (ALSO NORTH LINE SUBJECT PARCEL)
  - (5) BASIS OF ELEVATION PCDDM PLAN "I-83-226 SHEET 4 OF 9 FLOWLINE OF MH\*3-3 FLOWLINE EAST ELEVATION 2820.00
  - (6) APPROXIMATE LINE WHICH IS 3.0 FEET ABOVE THE CENTERLINE OF MAIN WASH
  - (7) AS OF 12-2-91 THERE ARE TWO CORNERS IN USE AS THE SOUTH 1/4 CORNER OF SECTION 26 EVIDENCE IN THIS OFFICE INDICATE THAT THE CORNER USED MORE CLOSELY REPRESENTS THE POSITION OF THE CORNER ACCEPTED BY RIDGELAND PARK SOUTH AND MOST OTHER SUBDIVISIONS IN SECTION 26, HOWEVER THE CORNER APPROXIMATELY 7.10 NORTH AND 5.20 EAST WAS ACCEPTED BY ESCALANTE PLACE SUBDIVISION IN SECTION 35.

**RESULTS OF SURVEY**

OF A PORTION OF THE SOUTHEAST QUARTER OF SECTION 26 TOWNSHIP 14 SOUTH RANGE 15 EAST GILA AND SALT RIVER BASE AND MERIDIAN PIMA COUNTY, ARIZONA



Z-2018-012  
 Z-2017-518 2/2  
 REVISED TOPOG WASH 5-23-92  
 REVISED MAP 1-10-92  
 NOTE #7  
 REVISIONS 12-13-91 DATE

<b>RFM</b>	ROBERT F. MELLEN	DATE: 11-29-91
	REGISTERED LAND SURVEYOR	DR BY: EMT CKEYI REM
(602) 888-1012	1250 W. MOHAVE ST. TUCSON, ARIZONA	JOB NO. 91148
SCALE: 1"=40'		SHEET 1 OF 1