

DISCLAIMER:

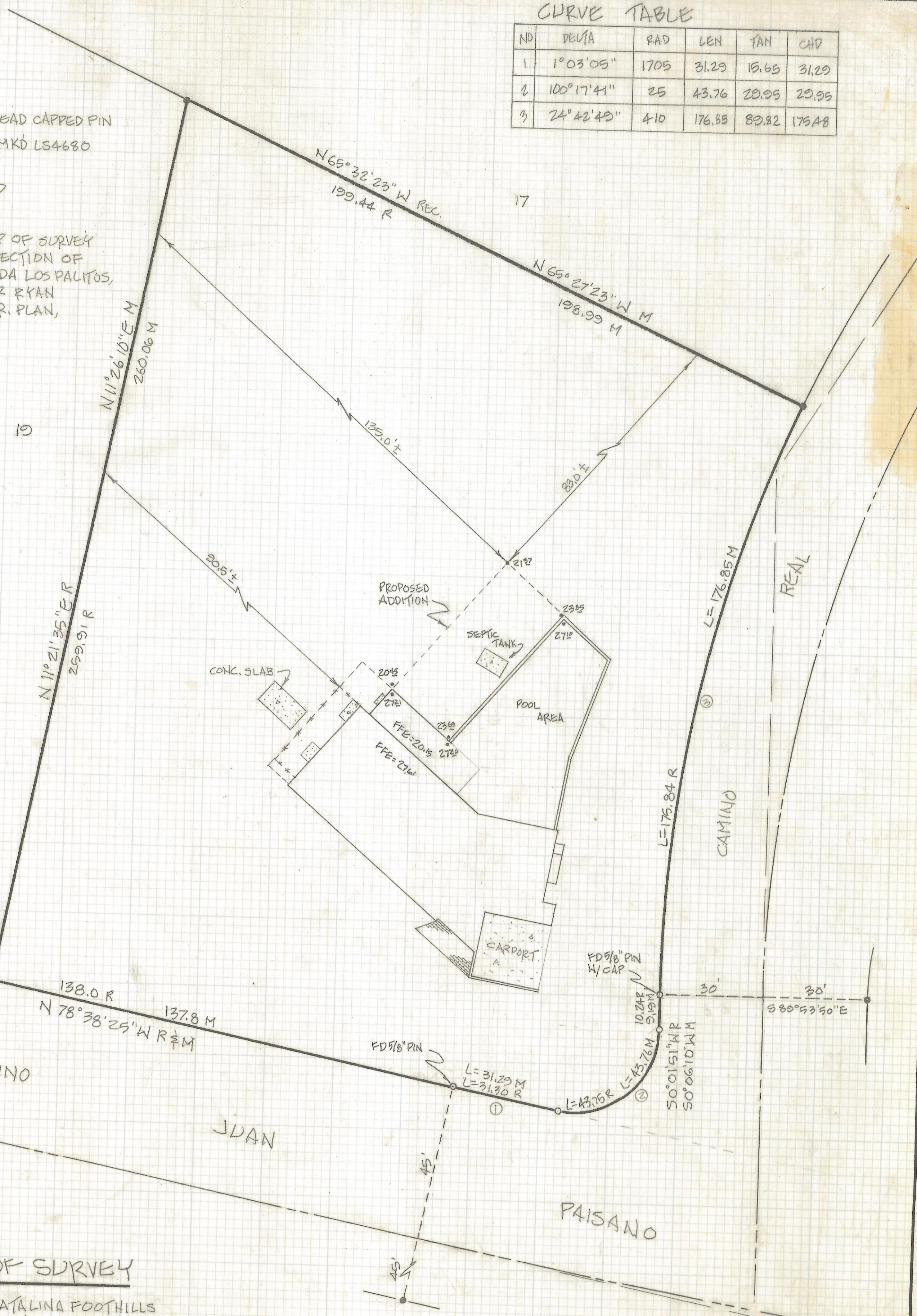
This unrecorded Record of Survey was donated to the City of Tucson. The City of Tucson provides this data for your personal use "as is." Additionally, the City of Tucson provides this information with the understanding that it is not guaranteed to be accurate, correct or complete and conclusions drawn from such information are the responsibility of the user.

CURVE TABLE

NO	DELTA	RAD	LEN	TAN	CHD
1	1°03'05"	1705	31.29	15.65	31.29
2	100°17'41"	25	43.76	29.95	29.95
3	24°42'49"	410	176.85	89.82	176.85

NOTES:

- 1) \odot INDICATES FOUND 2" LEAD CAPPED PIN
- 2) \ominus INDICATES SET 1/2" PIN MKD LS4680 UNLESS NOTED
- 3) R - MAP OR DEED RECORD
- 4) M - MEASURED
- 5) BENCHMARK DATUM - TOP OF SURVEY MONUMENT AT INTERSECTION OF CAMINO REAL & CERRADA LOS PALITOS, ELEV. = 2624.03, PER RYAN ENGINEERS STREET IMPR. PLAN, JOB# 610300,



RESULTS OF SURVEY

OF LOT 18 OF CATALINA FOOTHILLS ESTATES #8 AS SHOWN IN BOOK 4 OF MAPS AND PLATS AT PAGE 3 IN THE OFFICE OF THE PIMA COUNTY RECORDER, PIMA COUNTY, ARIZONA.



Z-2018-018

RFM	ROBERT F. MELLEN	
	REGISTERED LAND SURVEYOR	
	1250 W. MOHAVE ST. TUCSON, ARIZONA	
	(602) 888-1012 SCALE: 1" = 20'	
REVISIONS	DATE	
	DATE: 1- -96	
	DR BY: GJM CK BY: RFM	
	JOB NO. 90-2	
	SHEET 1 OF 1	