

DISCLAIMER:

This unrecorded Record of Survey was donated to the City of Tucson. The City of Tucson provides this data for your personal use "as is." Additionally, the City of Tucson provides this information with the understanding that it is not guaranteed to be accurate, correct or complete and conclusions drawn from such information are the responsibility of the user.

CTR. SEC. 3
NOT FOUND

TRAILS END ESTATES
BK 22 PG. 82 M&P

S 89° 59' 59" E (R) 372.97 (R)
S 89° 59' 04" W (M) 371.36 (M)

SEE NOTE #4
SET 1/2" PIN

FD NAIL & TAG
IN ROCK MKD
L.S. 4680

FD STEEL PIN
MKD L.S. 4680

PARCEL 3

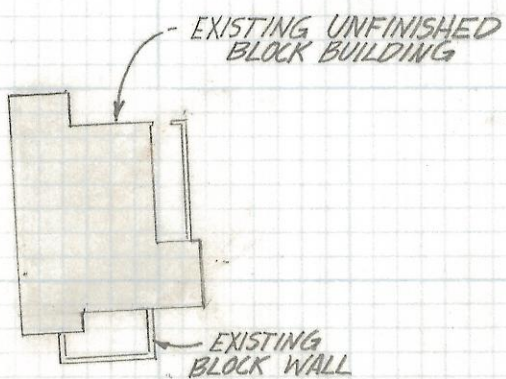
PARCEL 4

NORTH
SCALE 1" = 50'

PARCEL 2

NOTES

- (1) SEE JOB # 76-2
- (2) M-MEASURED
- (3) R-MAP OR DEED RECORD
- (4) RESET NORTH WEST CORNER PER TRAILS END ESTATES, BK 22 PG. 82 OF MAPS & PLATS.



FD NAIL & TAG
IN ROCK MKD
L.S. 4680

S 83° 29' 56" E (M) 374.51 (M)
S 83° 29' 22" W 375.18 (R)

SET PIN
FD 5/8" PIN
3.2' SOUTH

955.25 (M)
955.35 (R)

258.0 (R)
258.02 (M)

FD NAIL & TAG
IN ROCK MKD
L.S. 4680

PARCEL 1

S 1/4 COR
SEC 3 FD
G.L.O. BRASS CAP

RESULTS OF SURVEY

OF A PORTION OF THE SOUTHWEST QUARTER OF THE
SOUTHEAST QUARTER OF SECTION 3, TOWNSHIP 14
SOUTH OF RANGE 12 EAST GILA AND SALT RIVER
BASE AND MERIDIAN, PIMA COUNTY ARIZONA



Z-2018-020

ROBERT F. MELLEN
REGISTERED LAND SURVEYOR
TUCSON ARIZONA
JOB # 90-6