

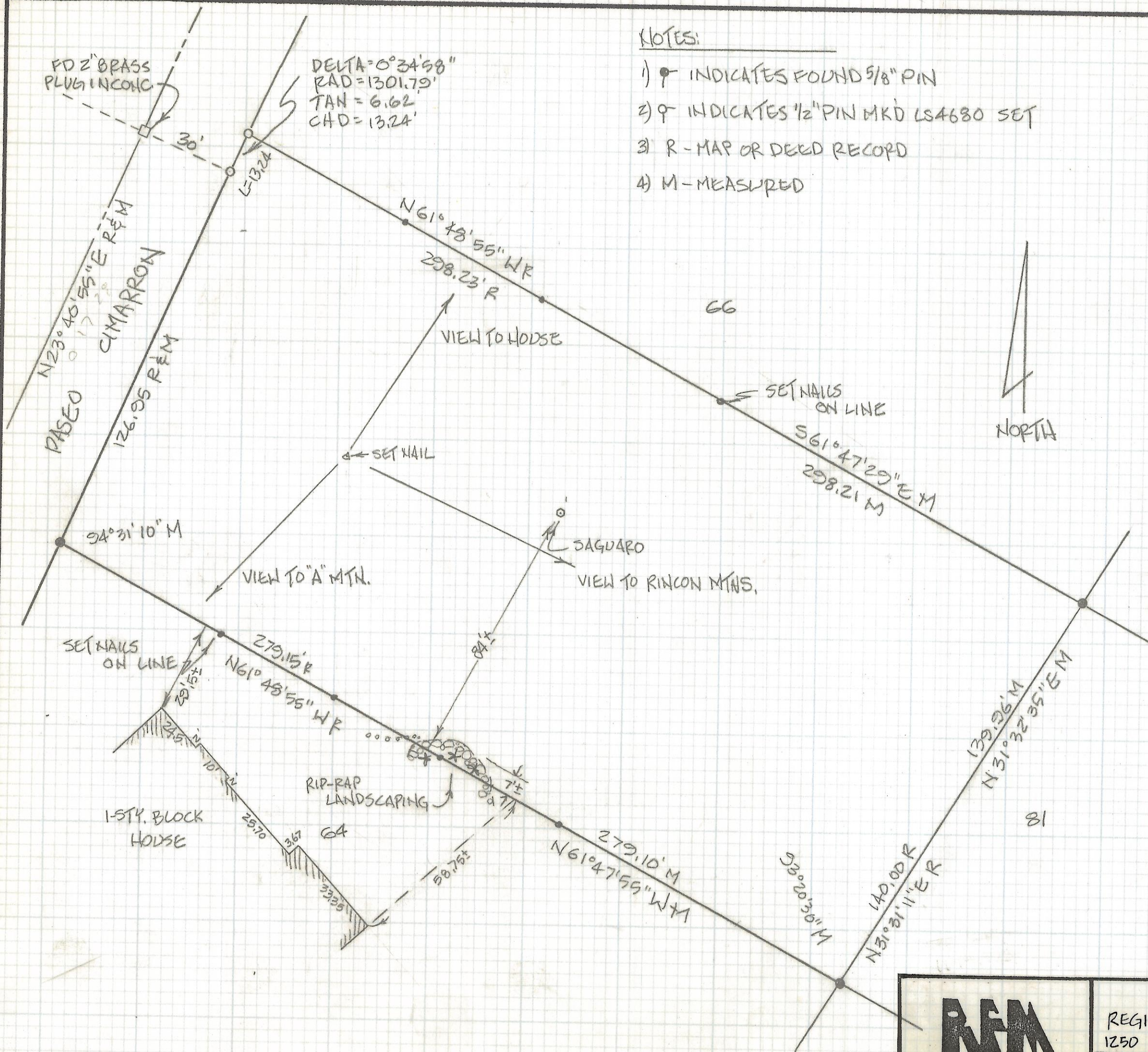
# **DISCLAIMER:**

**This unrecorded Record of Survey was donated to the City of Tucson. The City of Tucson provides this data for your personal use "as is." Additionally, the City of Tucson provides this information with the understanding that it is not guaranteed to be accurate, correct or complete and conclusions drawn from such information are the responsibility of the user.**



# NOTES:

- 1)  $\bullet$  INDICATES FOUND  $\frac{5}{8}$ " PIN
- 2)  $\circ$  INDICATES  $\frac{1}{2}$ " PIN MKD LS4680 SET
- 3) R - MAP OR DEED RECORD
- 4) M - MEASURED



## RESULTS OF SURVEY

OF LOT 65 OF CIMARRON FOOTHILLS  
ESTATES AS SHOWN IN BOOK 25  
OF MAPS AND PLATS AT PAGE 43 IN  
THE OFFICE OF THE PIMA COUNTY  
RECORDER, PIMA COUNTY, ARIZONA.



Z-2018-021

VIEWS & HOUSE DIM.	1-25-90
REVISIONS	DATE

**RFM**

ROBERT F. MELLEN  
REGISTERED LAND SURVEYOR  
1250 W. MOHAVE ST. TUCSON, ARIZONA  
(602) 888-1012

DATE: 1-12-90
DR BY: GM CK BY: RFM
JOB NO. 90-7
SHEET 1 OF 1