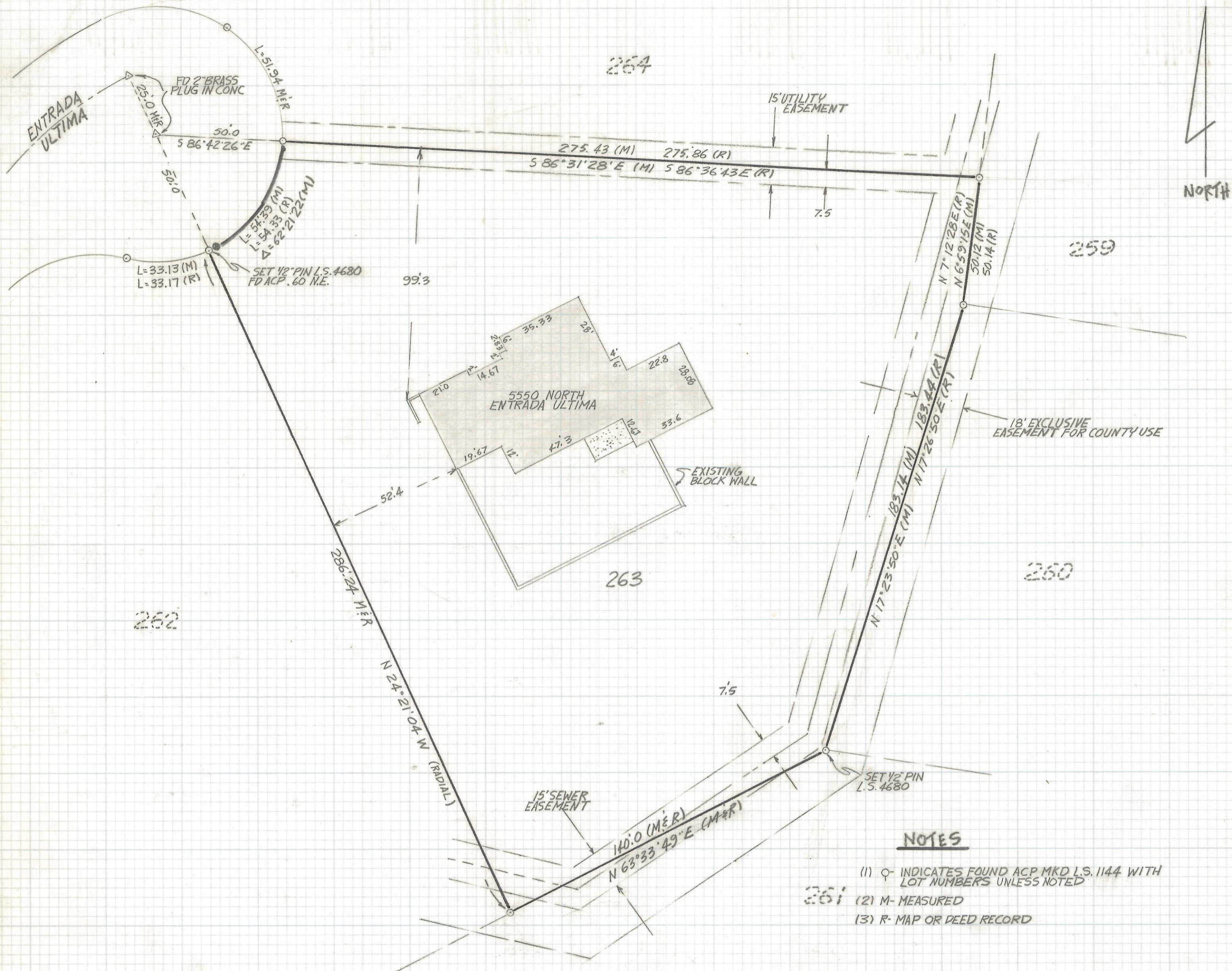


DISCLAIMER:

This unrecorded Record of Survey was donated to the City of Tucson. The City of Tucson provides this data for your personal use "as is." Additionally, the City of Tucson provides this information with the understanding that it is not guaranteed to be accurate, correct or complete and conclusions drawn from such information are the responsibility of the user.



262

263

264

259

260

261

NOTES

- (1) ♀ INDICATES FOUND ACP MKD L.S. 1144 WITH LOT NUMBERS UNLESS NOTED
- (2) M- MEASURED
- (3) R- MAP OR DEED RECORD

RESULTS OF SURVEY

OF LOT 263 CATALINA FOOTHILLS ESTATES NO. 7 RECORDED IN BOOK 24 OF MAPS AND PLATS AT PAGE 54 IN THE OFFICE OF THE PIMA COUNTY RECORDER PIMA COUNTY ARIZONA



Z-2018-022

REVISIONS	DATE

RFM	ROBERT F. MELLEN	DATE: 2-19-90
	REGISTERED LAND SURVEYOR	DR BY: E.M.T. CKEYI
	1250 W. MOHAVE ST. TUCSON, ARIZONA	JOB NO. 90-9
(602) 888-1012	SCALE: 1" = 30'	SHEET 1 OF 1