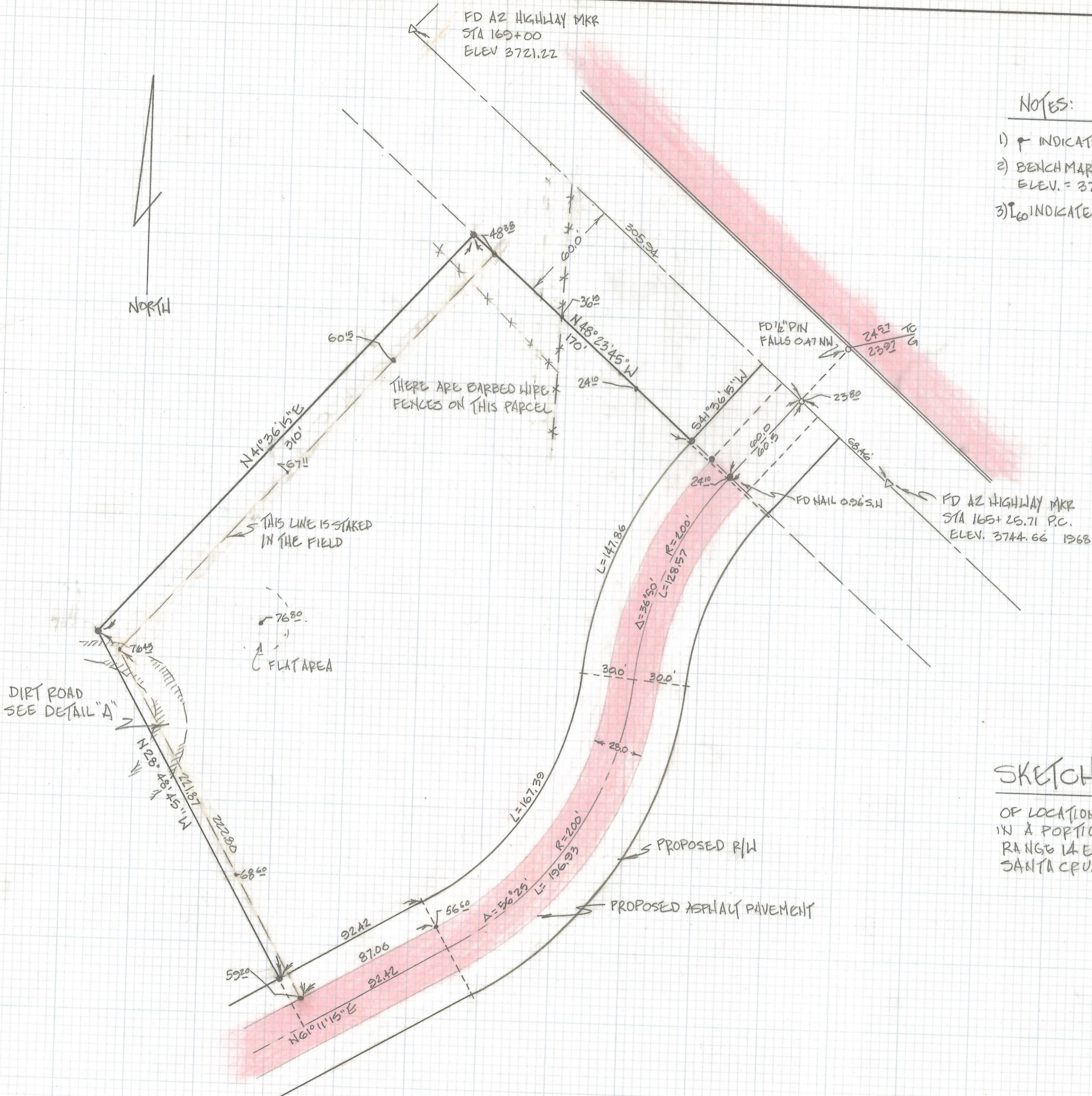


DISCLAIMER:

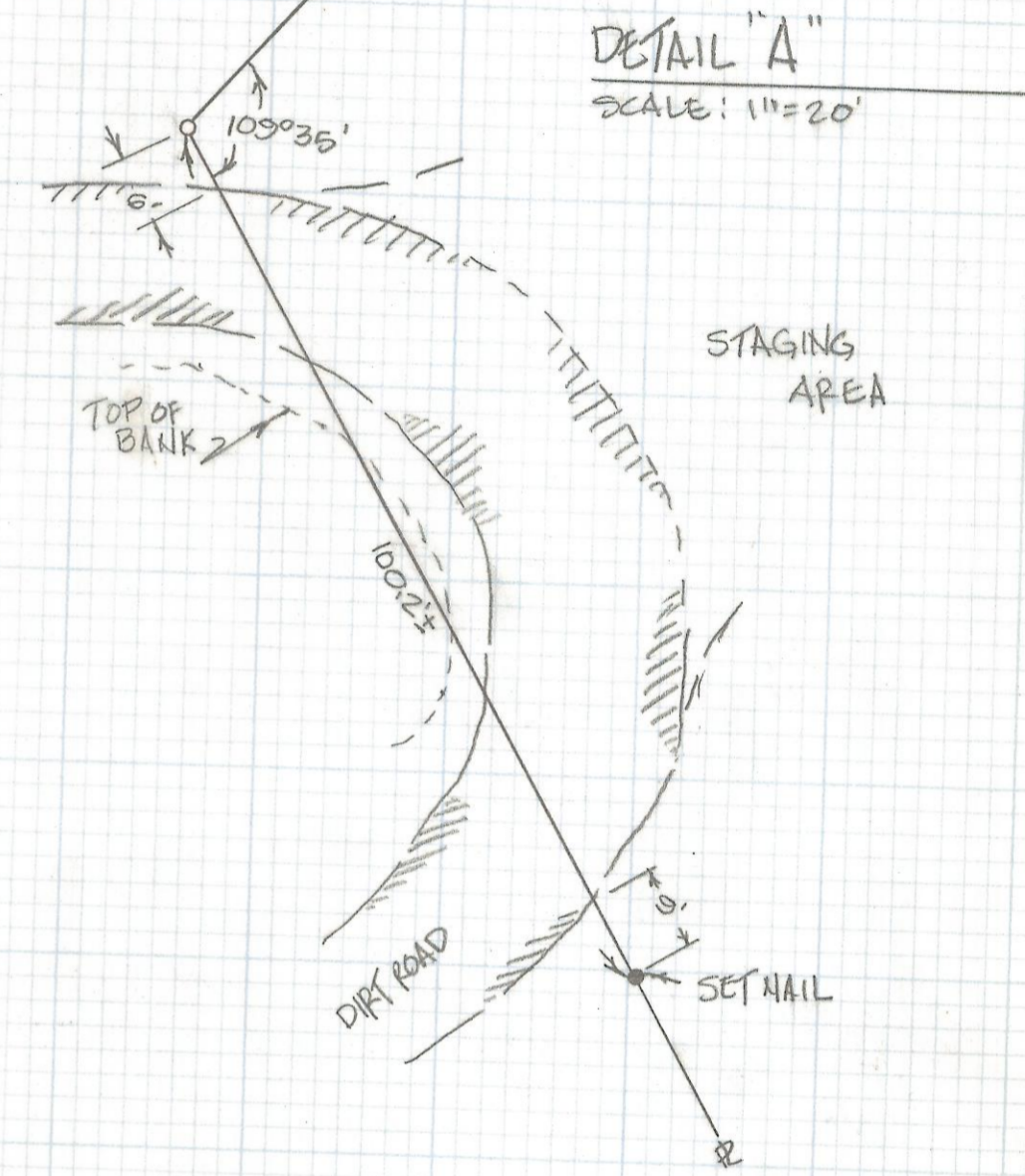
This unrecorded Record of Survey was donated to the City of Tucson. The City of Tucson provides this data for your personal use "as is." Additionally, the City of Tucson provides this information with the understanding that it is not guaranteed to be accurate, correct or complete and conclusions drawn from such information are the responsibility of the user.

CLEARPRINT

NORTH



- NOTES:
- 1) \perp INDICATES SET NAIL
 - 2) BENCHMARK = AZ HIGHWAY MKR STA 165+25.71 ELEV. = 3744.66
 - 3) \perp INDICATES SPOT ELEVATION



SKETCH
OF LOCATION OF PROPOSED NOGALES FIRE STATION
IN A PORTION OF SECTION 5, TOWNSHIP 24 SOUTH
RANGE 14 EAST, GILA AND SALT RIVER BASE & MERIDIAN,
SANTA CRUZ COUNTY, ARIZONA

Z-2018-032

RFM	ROBERT F. MELLEN		REVISIONS		DATE	
	REGISTERED LAND SURVEYOR		DR BY: GJM		CK BY:	
	1250 W. MOHAVE ST. TUCSON, ARIZONA		JOB NO. 90-22		SHEET 1 OF 1	
	(602) 388-1012		SCALE: 1"=40			