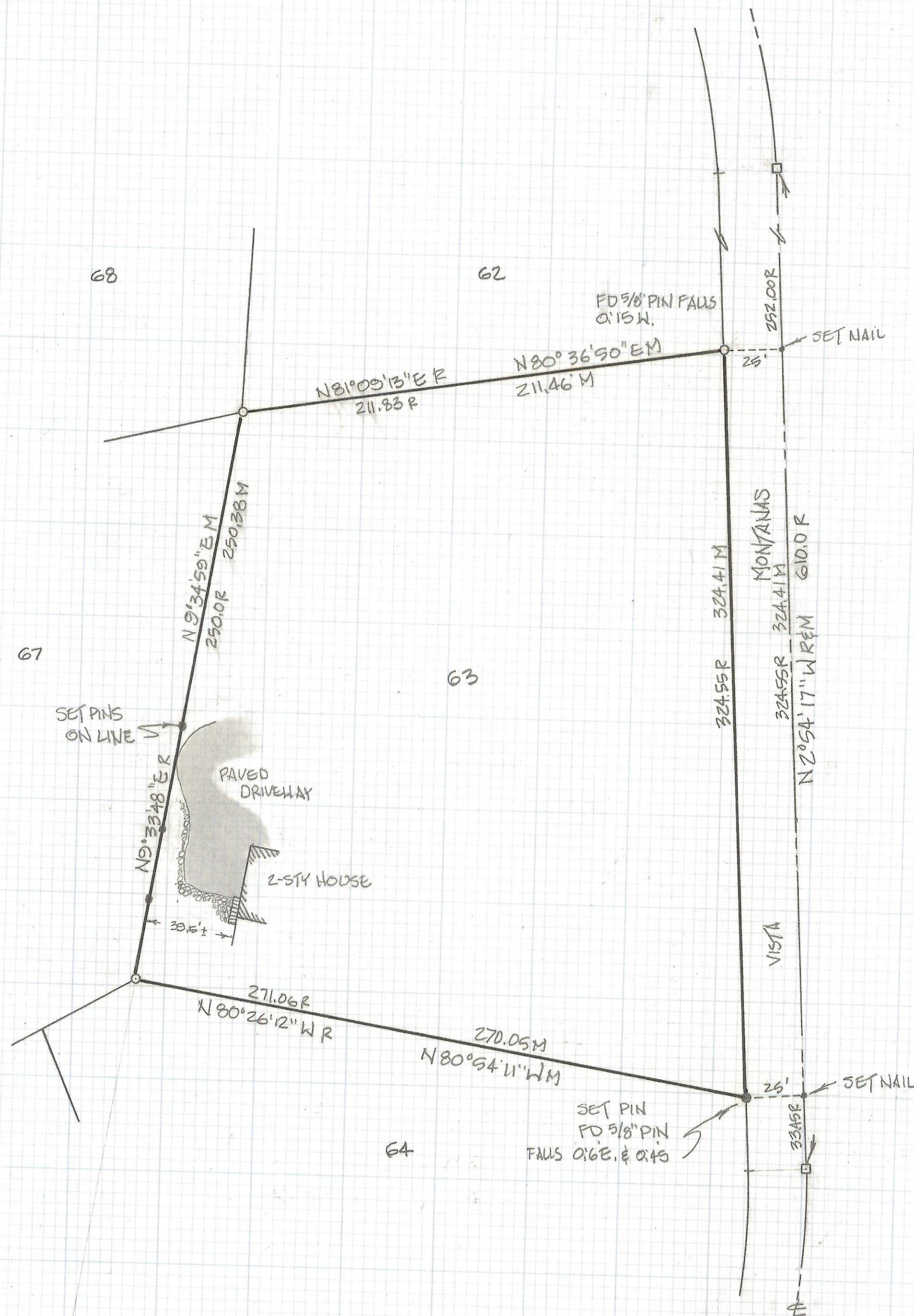


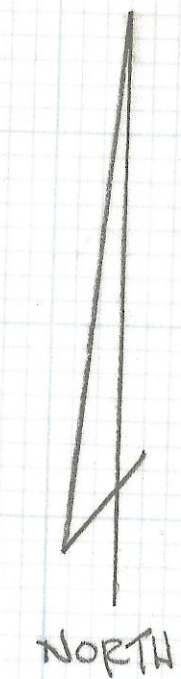
DISCLAIMER:

This unrecorded Record of Survey was donated to the City of Tucson. The City of Tucson provides this data for your personal use "as is." Additionally, the City of Tucson provides this information with the understanding that it is not guaranteed to be accurate, correct or complete and conclusions drawn from such information are the responsibility of the user.



NOTES:

- 1) \circ INDICATES $\frac{5}{8}$ " PIN FOUND, MKD LS 4785 AS NOTED
- 2) \bullet INDICATES $\frac{1}{2}$ " PIN MKD LS 4680 SET UNLESS NOTED
- 3) R - MAP OR DEED RECORD
- 4) M - MEASURED



RESULTS OF SURVEY

OF LOT 63 OF CATALINA DEL SOL AS SHOWN IN BOOK 29 OF MAPS AND PLATS AT PAGE 37 IN THE OFFICE OF THE PIMA COUNTY RECORDER, PIMA COUNTY, ARIZONA.



Z-2018-033

REVISIONS		DATE
RFM	ROBERT F. MELLEN	DATE: 3-2-90
	REGISTERED LAND SURVEYOR	DR BY: GM CK BY: EMT
	1250 W. MONAHE ST. TUCSON, ARIZONA	JOB NO. 90-24
	(602) 888-1012 SCALE: 1" = 40'	SHEET 1 OF 1