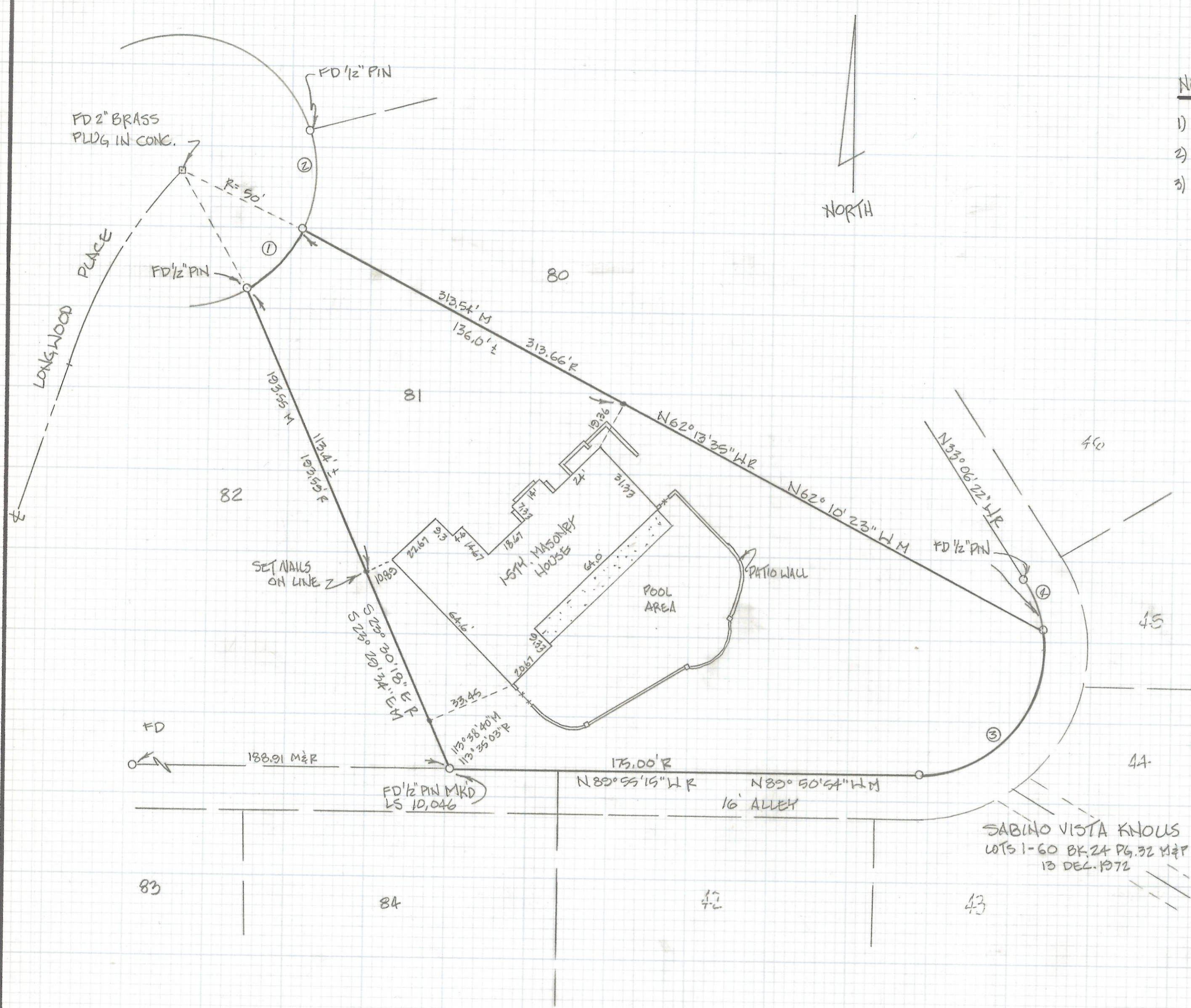


# **DISCLAIMER:**

**This unrecorded Record of Survey was donated to the City of Tucson. The City of Tucson provides this data for your personal use "as is." Additionally, the City of Tucson provides this information with the understanding that it is not guaranteed to be accurate, correct or complete and conclusions drawn from such information are the responsibility of the user.**





NOTES

- 1)  $\circ$  INDICATES 1/2" PIN MKD US 4680 SET UNLESS NOTED
- 2) R - MAP OR DEED RECORD
- 3) M - MEASURED

RESULTS OF SURVEY

OF LOT 81 OF SABINO VISTA KNOLLS AS SHOWN IN BOOK 26 OF MAPS AND PLATS AT PAGE 16 IN THE OFFICE OF THE PIMA COUNTY RECORDER, PIMA COUNTY, ARIZONA.

CURVE DATA

#	DELTA	RAD	LEN	TAN	CHD
1	36° 12' 39"	50.0	31.60	15.36	31.08
2	43° 40' 15"	50.0	38.11	20.03	37.19
3	38° 50' 05"	47.0	81.07	54.87	71.39
4	24° 31' 54"	47.0	20.12	10.22	19.97

Z-2018-036



ROBERT F. MELLEN  
 REGISTERED LAND SURVEYOR  
 1250 W. MOHAVE ST. TUCSON, ARIZONA  
 (602) 888-1012 SCALE: 1" = 30'

REVISIONS	DATE
	3-26-90
DR BY: GJM CKBY: RFM	
JOB NO. 90-29	
SHEET 1 OF 1	