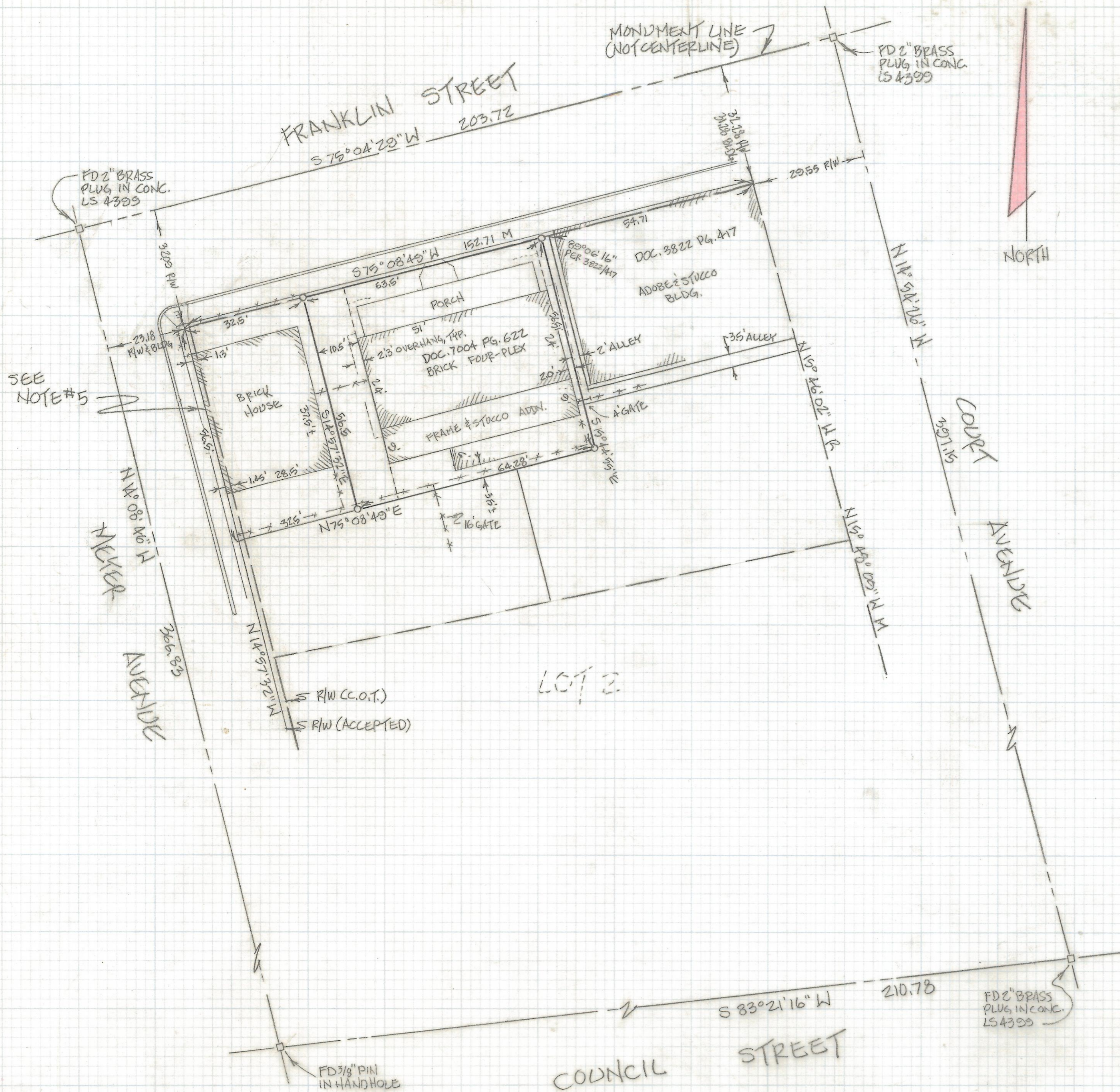


DISCLAIMER:

This unrecorded Record of Survey was donated to the City of Tucson. The City of Tucson provides this data for your personal use "as is." Additionally, the City of Tucson provides this information with the understanding that it is not guaranteed to be accurate, correct or complete and conclusions drawn from such information are the responsibility of the user.



NOTES:

- 1) P INDICATES 1/2" PIN MKD LS 4680 SET UNLESS NOTED
- 2) R- MAP OR DEED RECORDED
- 3) M- MEASURED
- 4) SEE JOB 87-162, DOC. 71 PG. 195 D.P.E., DOC. 220 PG. 427
- 5) WEST LINE OF THIS BUILDING ASSUMED RIGHT-OF-WAY FROM OCCUPATION

RESULTS OF SURVEY

OF A PORTION OF LOT 1 OF BLOCK 176 OF CITY OF TUCSON AS SHOWN IN BOOK 3 OF MAPS AND PLATS AT PAGE 71 IN THE OFFICE OF THE PIMA COUNTY RECORDER, PIMA COUNTY, ARIZONA.

Z-2018-039

REVISION	DATE	BY	
<p>BOUNDARY SURVEY OF 186-192 W. FRANKLIN STREET</p>			<p>ROBERT P. MELLEN REGISTERED LAND SURVEYOR 1250 W MOHAVE ST TUCSON, ARIZONA 85705 (602) 888-1012</p>
DRAWN BY: GWM		CR. BY: RYM & ENT DATE: 4-18-90	
JOB NO. 90-40		SCALE: 1" = 20'	SHEET 1 OF 1