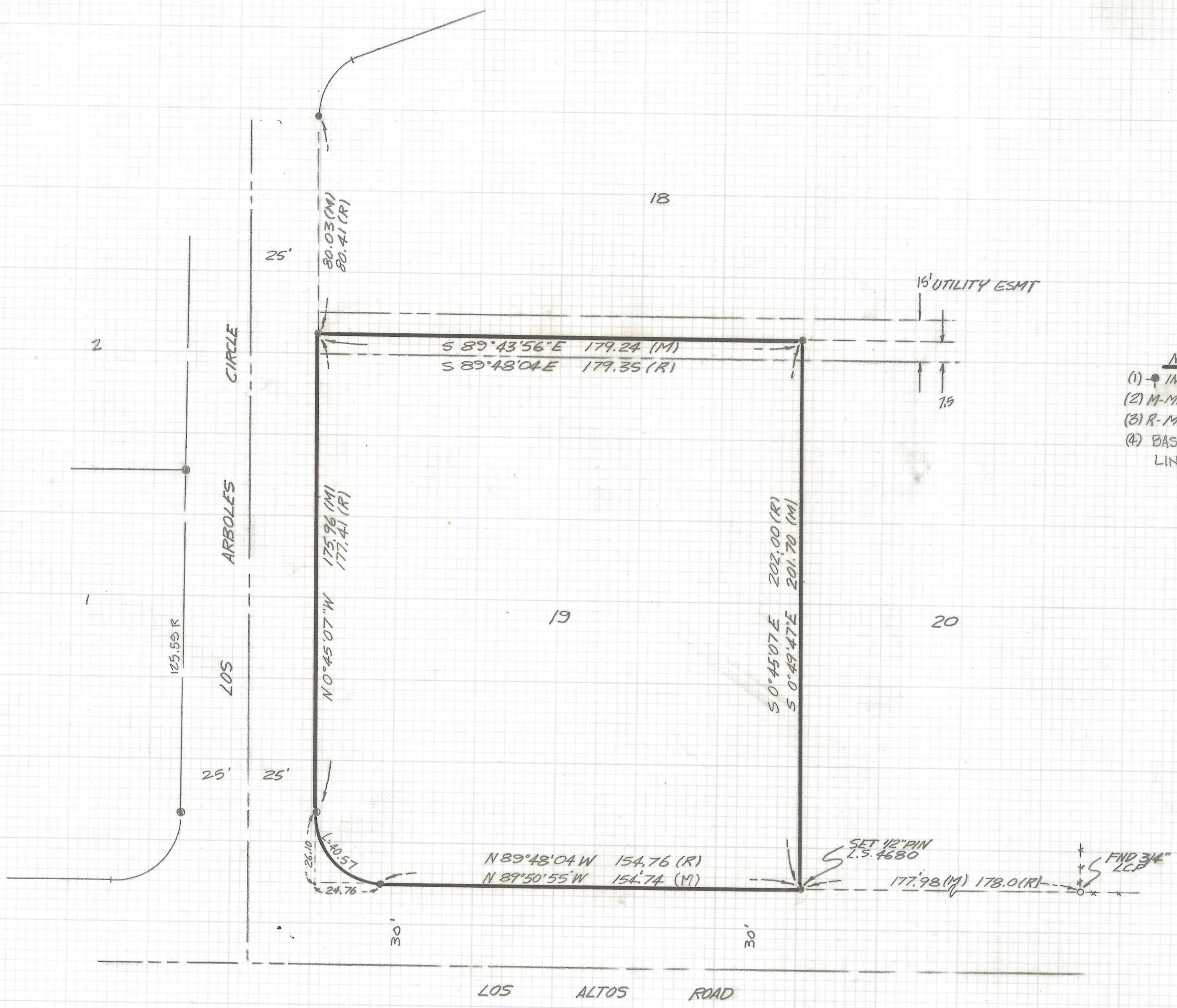


DISCLAIMER:

This unrecorded Record of Survey was donated to the City of Tucson. The City of Tucson provides this data for your personal use "as is." Additionally, the City of Tucson provides this information with the understanding that it is not guaranteed to be accurate, correct or complete and conclusions drawn from such information are the responsibility of the user.



- NOTES**
- (1) ● INDICATES FOUND 3/4" IRON PIN UNLESS NOTED
 - (2) M-MEASURED
 - (3) R-MAP OR DEED RECORD
 - (4) BASIS OF BEARINGS - N 0°45'07" W FOR THE WEST LINE OF LOT 19

RESULTS OF SURVEY

OF LOT 19 LOS ARBOLES SUBDIVISION AS RECORDED IN BOOK 14 OF MAPS AND PLATS AT PAGE 97 IN THE OFFICE OF THE PIMA COUNTY RECORDER PIMA COUNTY ARIZONA



Z-2018-042

RFM	ROBERT F. MELLEN	DATE: 5-11-90
	REGISTERED LAND SURVEYOR	DR BY: EMT CKBY: RFM
	1250 W. MOHAVE ST. TUCSON, ARIZONA	JOB NO. 90-46
(602) 888-1012	SCALE: 1" = 30'	SHEET 1 OF 1