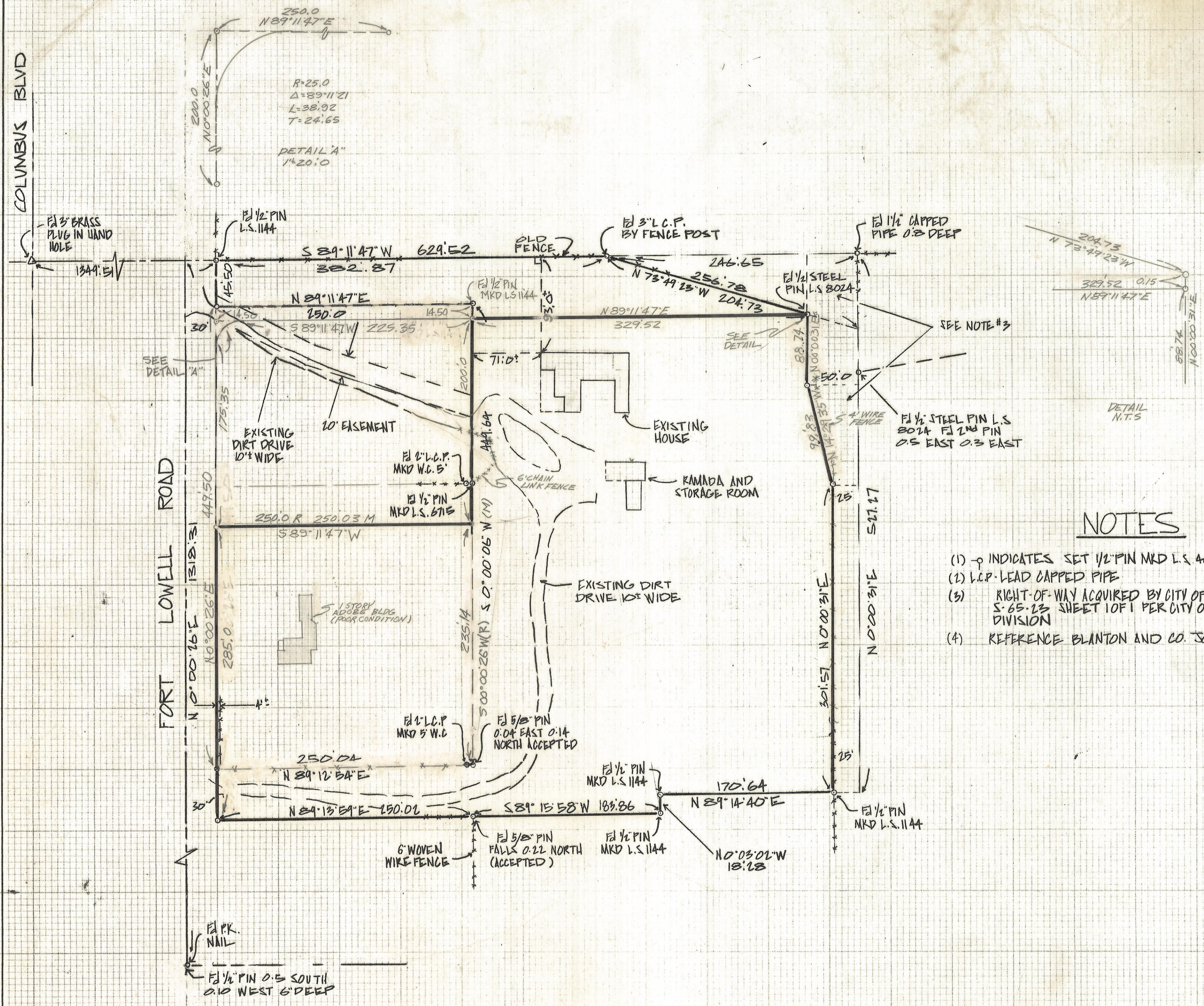


DISCLAIMER:

This unrecorded Record of Survey was donated to the City of Tucson. The City of Tucson provides this data for your personal use "as is." Additionally, the City of Tucson provides this information with the understanding that it is not guaranteed to be accurate, correct or complete and conclusions drawn from such information are the responsibility of the user.



SCALE 1"=60'



NOTES

- (1) \circ INDICATES SET 1/2" PIN MKD L.S. 4680 UNLESS NOTED
- (2) L.C.P. LEAD CAPPED PIPE
- (3) RIGHT-OF-WAY ACQUIRED BY CITY OF TUCSON SEE PLAN N^o S-65-23 SHEET 10F1 PER CITY OF TUCSON ENGINEERING DIVISION
- (4) REFERENCE BLANTON AND CO. JOB# 671-17

RESULTS OF SURVEY

OF A PORTION OF THE NORTHEAST QUARTER OF THE NORTHEAST QUARTER SECTION 34
 TOWNSHIP 13 SOUTH RANGE 14 EAST GILA AND SALT RIVER BASE AND MERIDIAN PIMA
 COUNTY ARIZONA



Z-2018-046

ROBERT F. MELLEN
 REGISTERED LAND SURVEYOR
 TUCSON, ARIZONA
 JOB# 90-69

REVISED 8-29-90
 REVISED 8-13-90