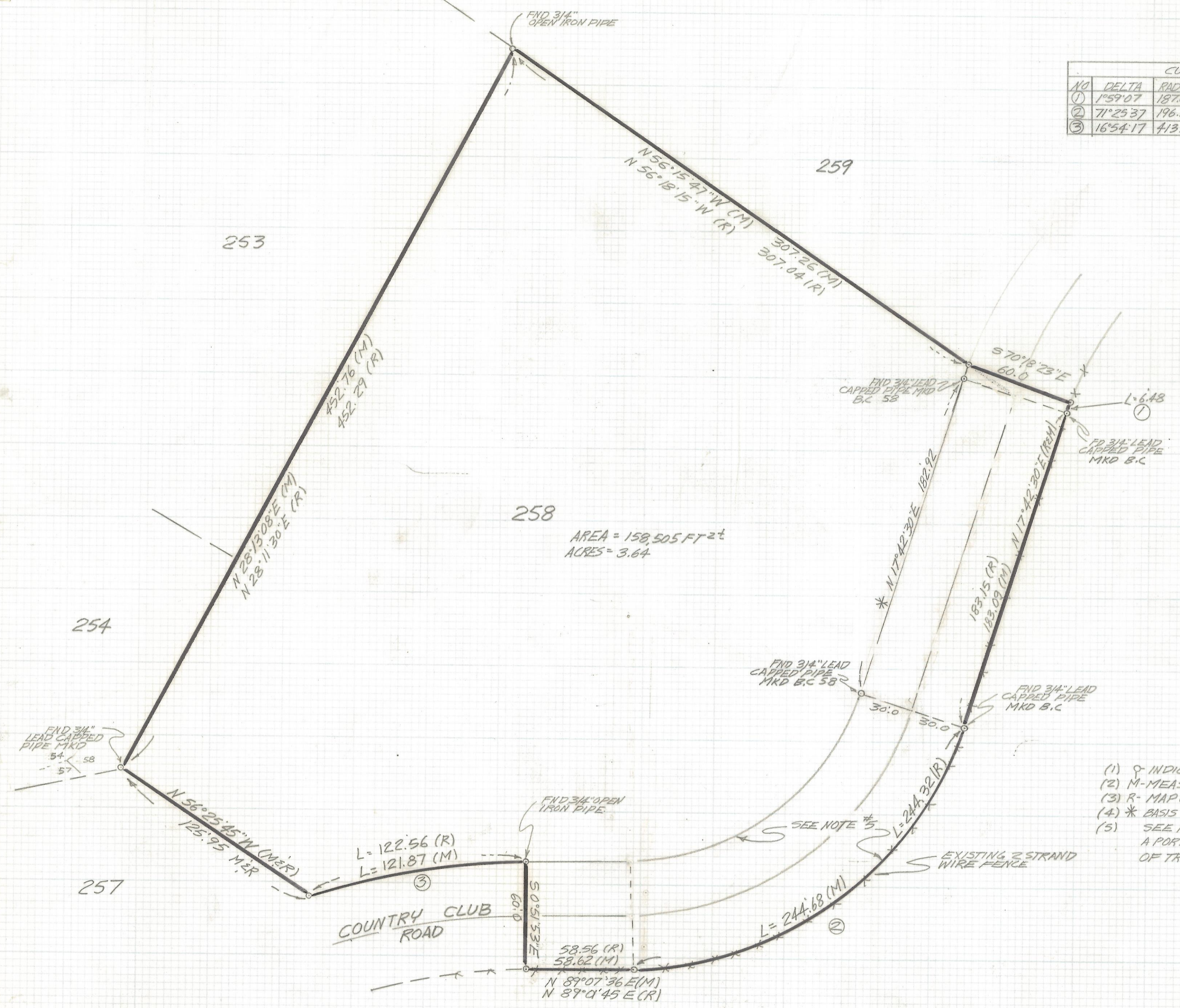
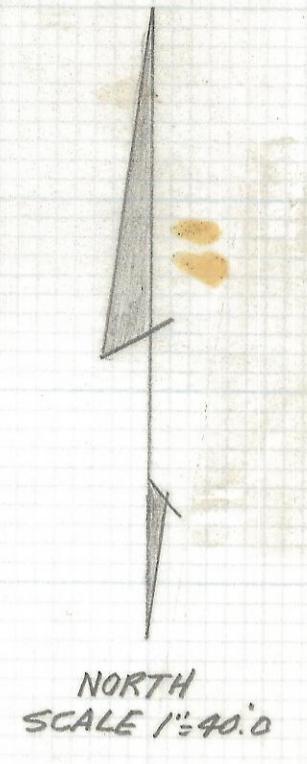


DISCLAIMER:

This unrecorded Record of Survey was donated to the City of Tucson. The City of Tucson provides this data for your personal use "as is." Additionally, the City of Tucson provides this information with the understanding that it is not guaranteed to be accurate, correct or complete and conclusions drawn from such information are the responsibility of the user.

CURVE DATA					
NO	DELTA	RADIUS	TANGENT	LENGTH	CHORD
①	1°59'07"	187.06	3.24	6.48	6.48
②	71°25'37"	196.27	141.10	244.68	229.14
③	16°54'17"	413.06	61.38	121.87	121.43



258
AREA = 158,505 FT²
ACRES = 3.64

NOTES

- (1) ♀ INDICATES SET 1/2" PIN MKD L.S. 4680 UNLESS NOTED
- (2) M-MEASURED
- (3) R- MAP OR DEED RECORD
- (4) * BASIS OF BEARINGS EASTERLY LINE LOT 258 N 17°42'30"E
- (5) SEE PIMA COUNTY ABANDONMENT PROCEEDINGS NO 2333, A PORTION OF COUNTRY CLUB ROAD PER PIMA COUNTY DEPT. OF TRANSPORTATION BOOK 18 PAGE 94

RESULTS OF SURVEY

OF LOT 258 CATALINA FOOTHILLS ESTATES NO. 2, AS RECORDED IN BOOK 8 OF MAPS AND PLATS AT PAGE 32, IN THE OFFICE OF THE PIMA COUNTY RECORDER PIMA COUNTY ARIZONA, AND A PORTION OF COUNTRY CLUB ROAD PER PIMA COUNTY DEPARTMENT OF TRANSPORTATION ABANDONMENT PROCEEDINGS NO. 2333, BOOK 18 PAGE 94 PIMA COUNTY, ARIZONA



Z-2018-048
ROBERT F. MELLEN
REGISTERED LAND SURVEYOR
TULSON, ARIZONA
JOB# 90-73