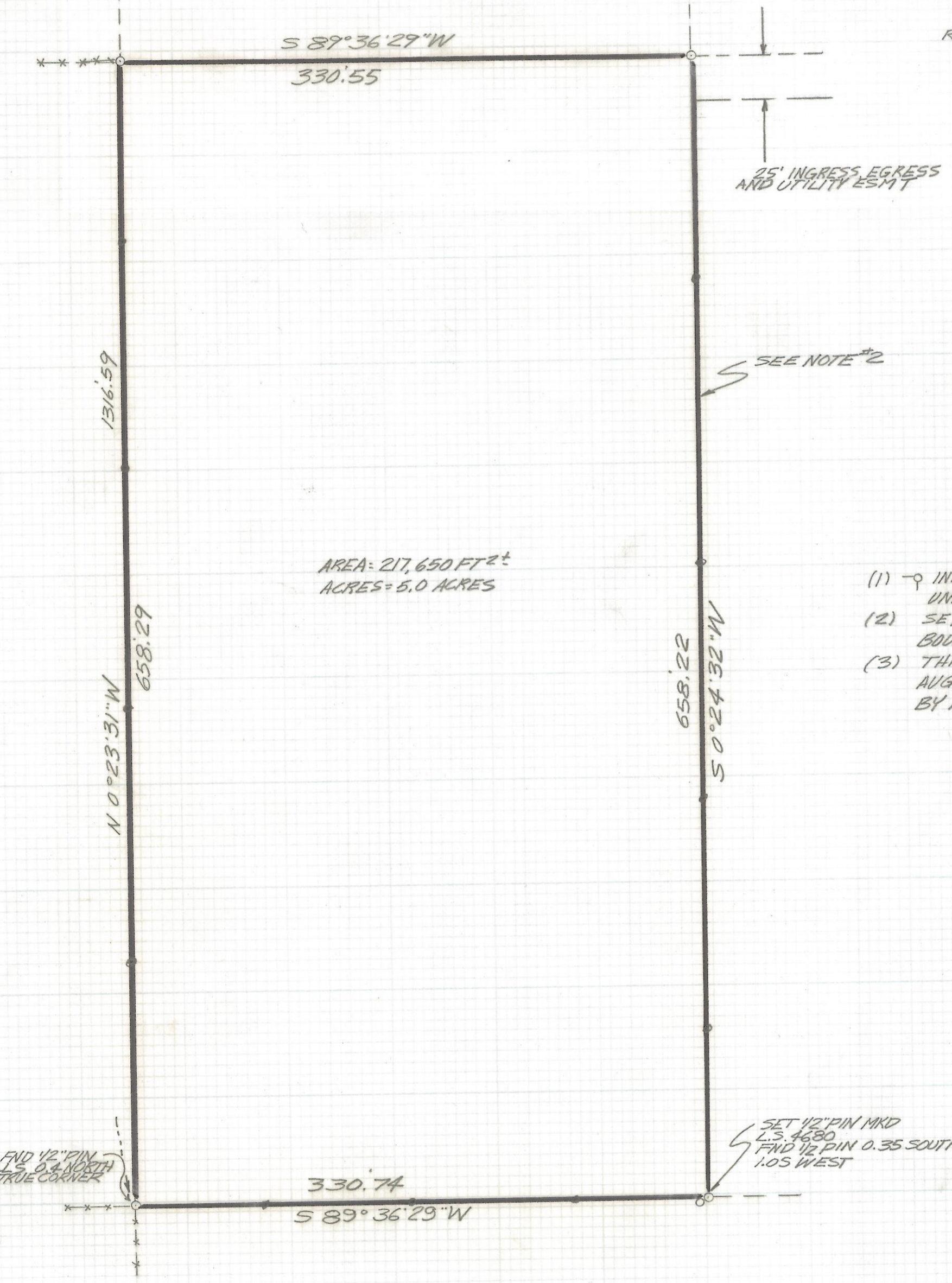
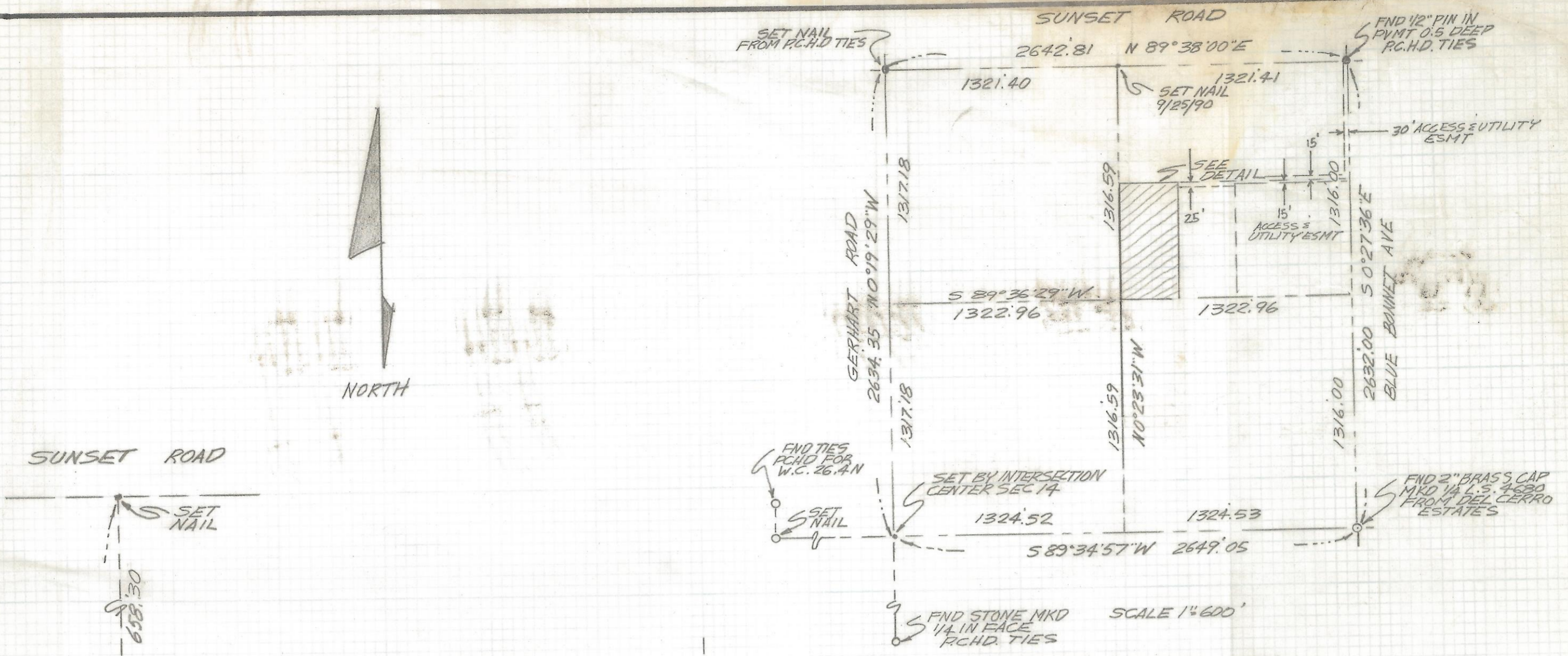


DISCLAIMER:

This unrecorded Record of Survey was donated to the City of Tucson. The City of Tucson provides this data for your personal use "as is." Additionally, the City of Tucson provides this information with the understanding that it is not guaranteed to be accurate, correct or complete and conclusions drawn from such information are the responsibility of the user.



AREA: 217,650 FT²
ACRES = 5.0 ACRES

SCALE 1" = 600'
SECTION 14, TOWNSHIP 13 SOUTH
RANGE 12 EAST, NORTHEAST QUARTER
G.S.R.B. & M

- NOTES**
- (1) ♀ INDICATES SET 1/2" PIN MKD L.S. 4680 UNLESS NOTED
 - (2) SET NAILS ON WEST, SOUTH AND EAST BOUNDARY LINES
 - (3) THIS SURVEY BASED ON JOBS 74-41 DATED AUGUST 1974 AND JOB# 75-119 DATED NOV. 1975 BY ROBERT F. MELLEN L.S. 4680

FND 1/2" PIN
FALLS 0.2 NORTH
OF TRUE CORNER

SET 1/2" PIN MKD
L.S. 4680
FND 1/2" PIN 0.35 SOUTH
1.05 WEST



RESULTS OF SURVEY

OF THE WEST HALF OF THE SOUTHWEST QUARTER OF THE
NORTHEAST QUARTER OF THE NORTHEAST QUARTER SECTION
14 TOWNSHIP 13 SOUTH OF RANGE 12 EAST GILA AND SALT RIVER
BASE AND MERIDIAN PIMA COUNTY, ARIZONA

Z-2018-049

REVISIONS		DATE
		9-26-90
ROBERT F. MELLEN REGISTERED LAND SURVEYOR 1250 W. MOHAVE ST. TUCSON, ARIZONA (602) 888-1012		DR BY: EMT CKBY: JOB NO. 90-80
SCALE: 1" = 60'		SHEET 1 OF 1

