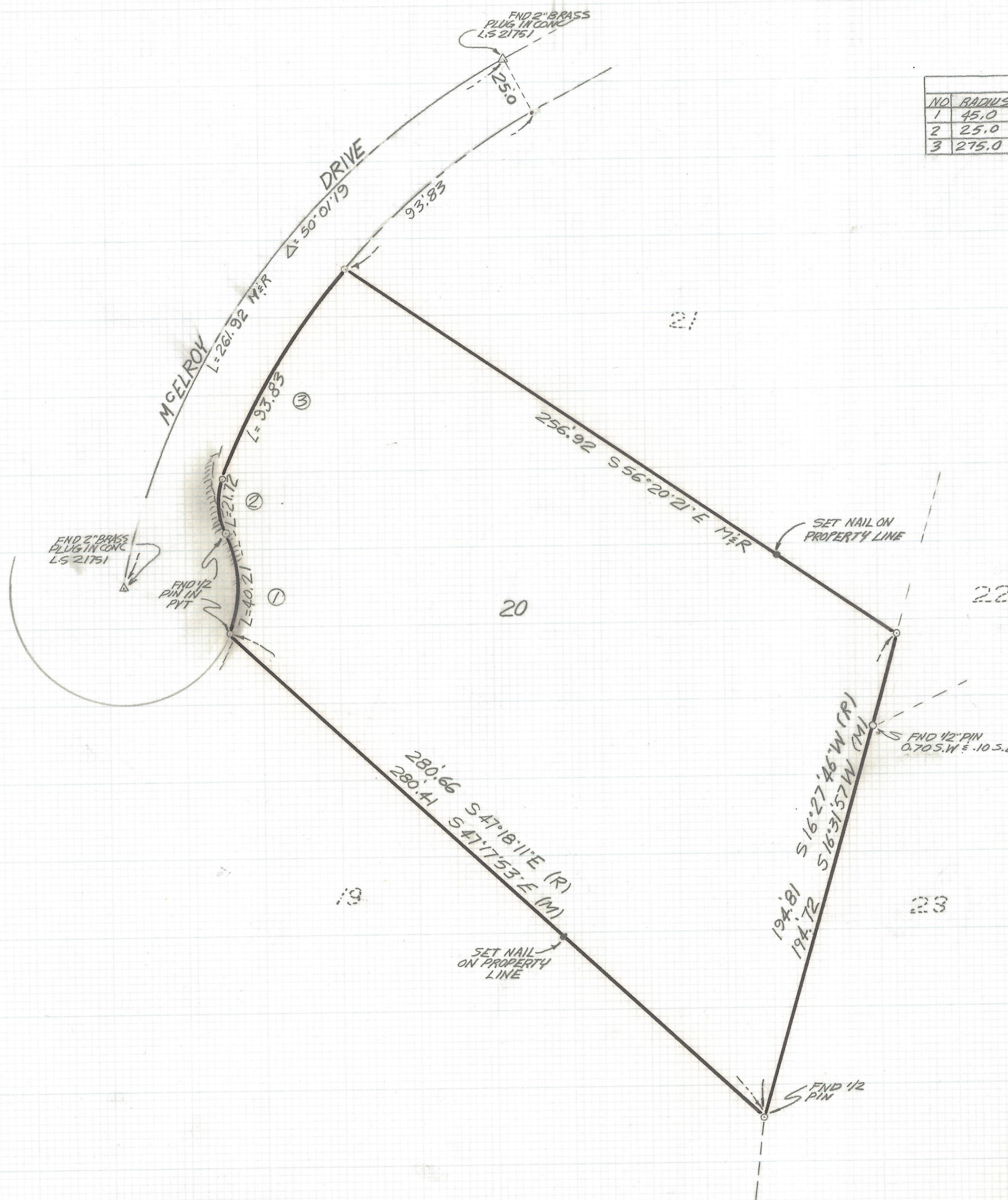


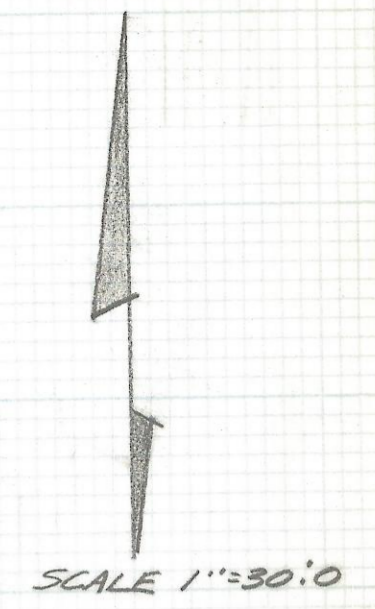
# **DISCLAIMER:**

**This unrecorded Record of Survey was donated to the City of Tucson. The City of Tucson provides this data for your personal use "as is." Additionally, the City of Tucson provides this information with the understanding that it is not guaranteed to be accurate, correct or complete and conclusions drawn from such information are the responsibility of the user.**





CURVE DATA					
NO	RADIUS	DELTA	TANGENT	LENGTH	CHORD
1	45.0	51° 11' 49"	21.56	40.21	38.89
2	25.0	49° 46' 51"	11.60	21.72	21.04
3	275.0	19° 32' 58"	47.38	93.83	93.38



- NOTES**
- (1)  $\phi$  INDICATES SET 1/2" PIN MKD L.S. 4680 UNLESS NOTED
  - (2) M- MEASURED
  - (3) R- MAP OR DEED RECORD

**RESULTS OF SURVEY**

OF LOT 20 PASEO MONTANA SUBDIVISION RECORDED IN BOOK 38 OF MAPS AND PLATS AT PAGE 35 IN THE OFFICE OF THE PIMA COUNTY RECORDER PIMA COUNTY ARIZONA



ROBERT F. MELLEN  
 REGISTERED LAND SURVEYOR  
 TUCSON, ARIZONA  
 JOB# 90-90

Z-2018-053