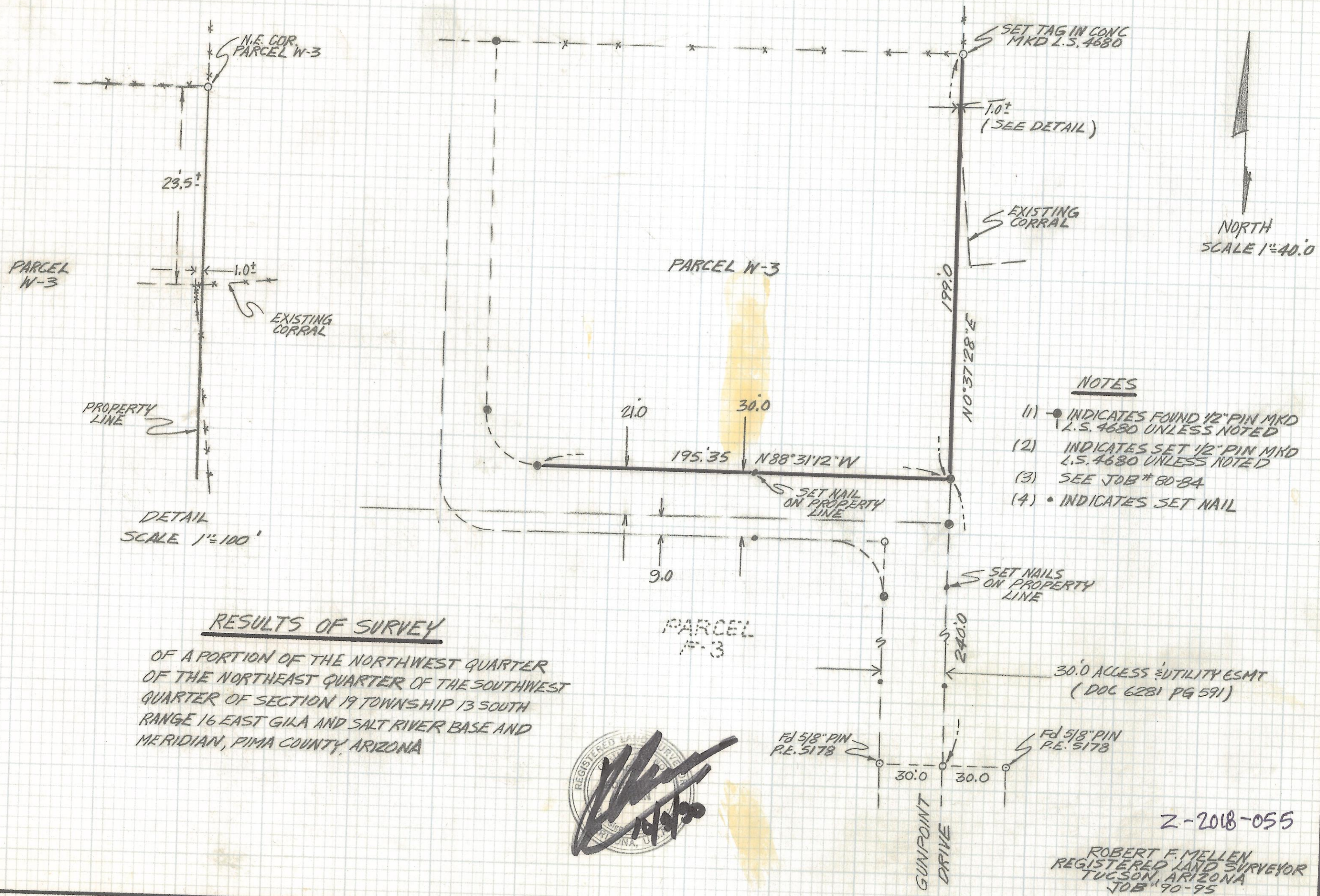


DISCLAIMER:

This unrecorded Record of Survey was donated to the City of Tucson. The City of Tucson provides this data for your personal use "as is." Additionally, the City of Tucson provides this information with the understanding that it is not guaranteed to be accurate, correct or complete and conclusions drawn from such information are the responsibility of the user.



- NOTES**
- (1) • INDICATES FOUND 1/2" PIN MKD L.S. 4680 UNLESS NOTED
 - (2) • INDICATES SET 1/2" PIN MKD L.S. 4680 UNLESS NOTED
 - (3) SEE JOB # 80-84
 - (4) • INDICATES SET NAIL

RESULTS OF SURVEY
 OF A PORTION OF THE NORTHWEST QUARTER
 OF THE NORTHEAST QUARTER OF THE SOUTHWEST
 QUARTER OF SECTION 19 TOWNSHIP 13 SOUTH
 RANGE 16 EAST GILA AND SALT RIVER BASE AND
 MERIDIAN, PIMA COUNTY, ARIZONA



Z-2018-055
 ROBERT F. MELLEN
 REGISTERED LAND SURVEYOR
 TUCSON, ARIZONA
 JOB # 90-95