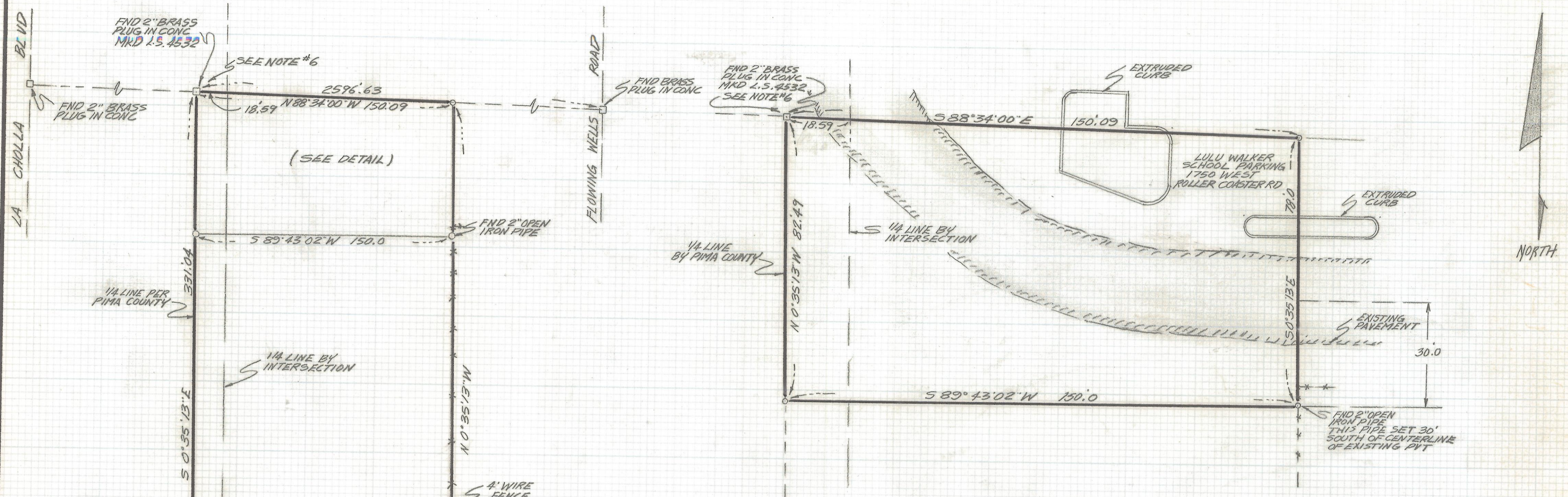


DISCLAIMER:

This unrecorded Record of Survey was donated to the City of Tucson. The City of Tucson provides this data for your personal use "as is." Additionally, the City of Tucson provides this information with the understanding that it is not guaranteed to be accurate, correct or complete and conclusions drawn from such information are the responsibility of the user.



DETAIL
SCALE = 1" = 20.0'

NOTES

- (1) -> INDICATES SET 1/2" PIN MKD L.S. 4680 UNLESS NOTED
- (2) • INDICATES FOUND 5/8" STEEL PIN
- (3) M - MEASURED
- (4) R - MAP OR DEED RECORD
- (5) SEE JOB# 72-37, 75-126 AND 88-75
- (6) THE NORTH 1/4 CORNER, THE CENTER OF SECTION 15 AND THE SOUTH 1/4 CORNER ARE NOT ON A STRAIGHT LINE. HOWEVER ALL HAVE BEEN IN PLACE FOR OVER 15 YEARS AND ARE IN GENERAL USE BY MANY SURVEYORS

RESULTS OF SURVEY

OF A PORTION OF THE WEST 150.0 FEET OF THE NORTHWEST QUARTER OF THE SOUTHEAST QUARTER OF SECTION 15, TOWNSHIP 13 SOUTH, OF RANGE 13 EAST, GILA AND SALT RIVER BASE AND MERIDIAN, PIMA COUNTY, ARIZONA



ROBERT F. MELLEN
REGISTERED LAND SURVEYOR
TUCSON, ARIZONA
JOB # 90-97