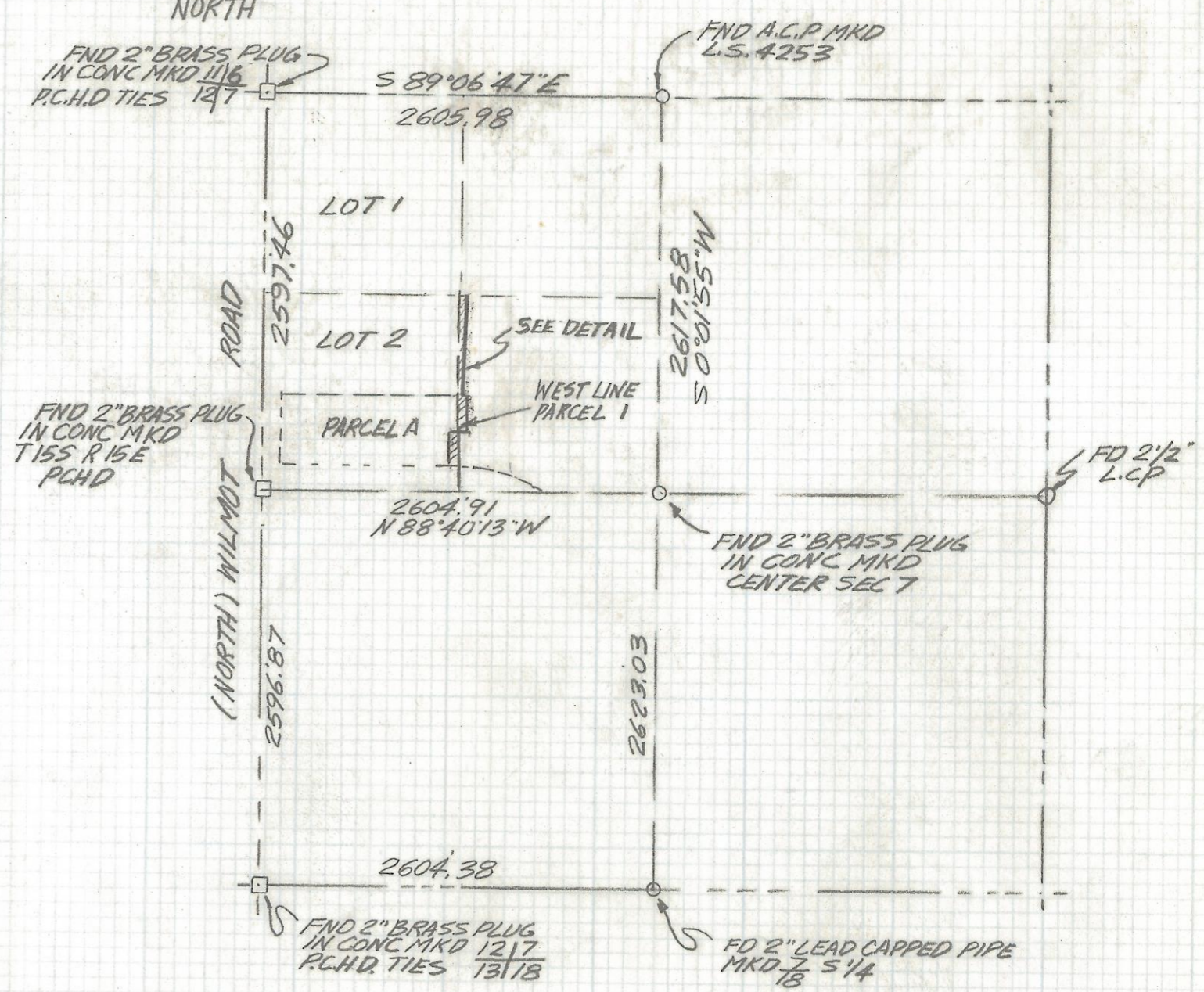
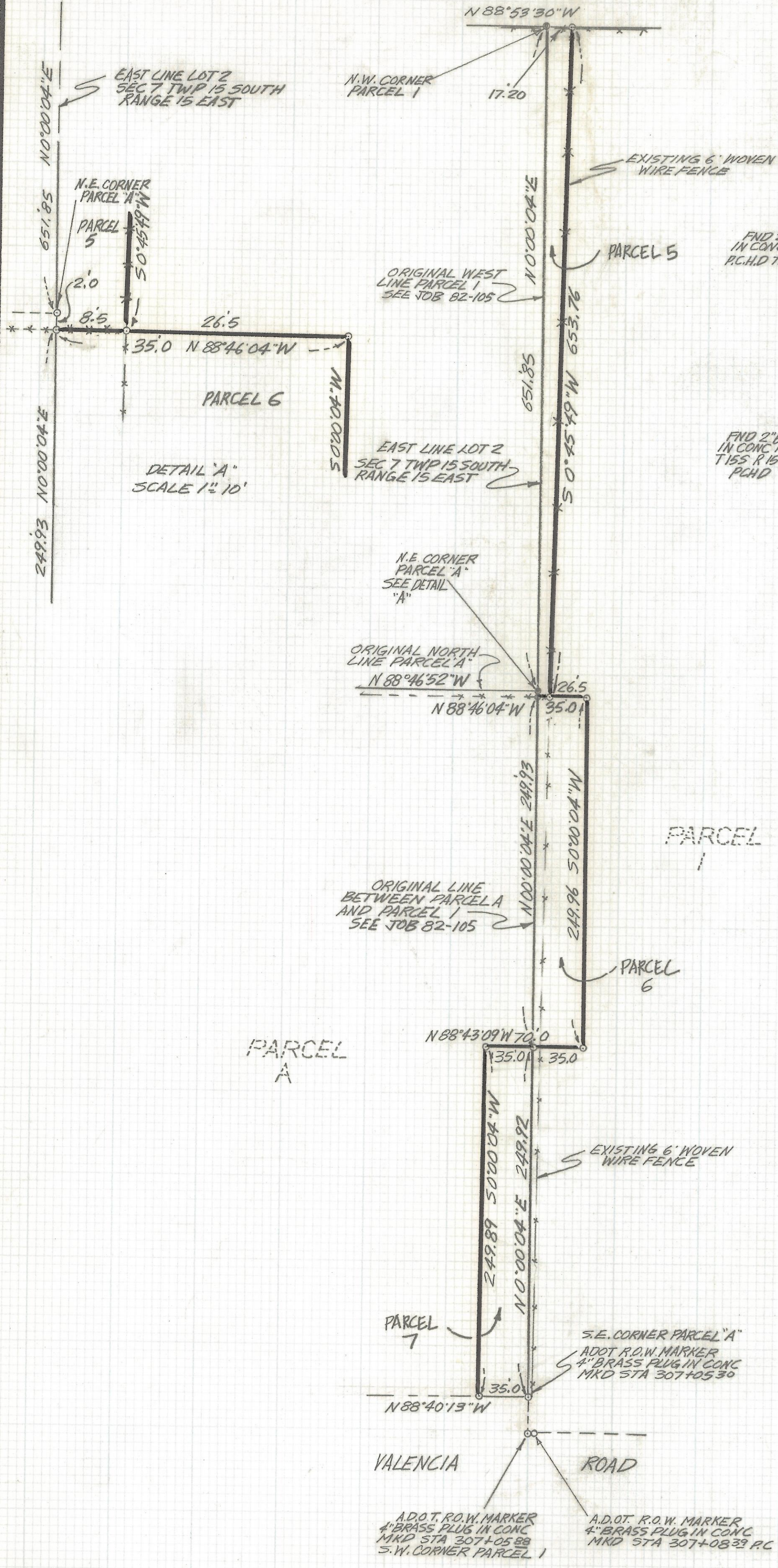


DISCLAIMER:

This unrecorded Record of Survey was donated to the City of Tucson. The City of Tucson provides this data for your personal use "as is." Additionally, the City of Tucson provides this information with the understanding that it is not guaranteed to be accurate, correct or complete and conclusions drawn from such information are the responsibility of the user.



NOTES

- (1) ♂ INDICATES SET 1/2" PIN MKD L.S. 4680 UNLESS NOTED
- (2) ♀ INDICATES FOUND 1/2" PIN L.S. 4680 SEE JOB # 82-105

RESULTS OF SURVEY

OF A PORTION OF THE SOUTH HALF OF THE NORTHWEST QUARTER OF SECTION 7 TOWNSHIP 15 SOUTH OF RANGE 15 EAST GILA AND SALT RIVER BASE AND MERIDIAN, PIMA COUNTY, ARIZONA



2-2018-057

REVISIONS		DATE
		11-26-90
ROBERT F. MELLEN		DR BY: ENT CKBY: R.F.M.
REGISTERED LAND SURVEYOR		JOB NO. 90-98
1250 W. MOHAVE ST. TUCSON, ARIZONA		SCALE: 1"=60'
(602) 888-1012		SHEET 2 OF 2

