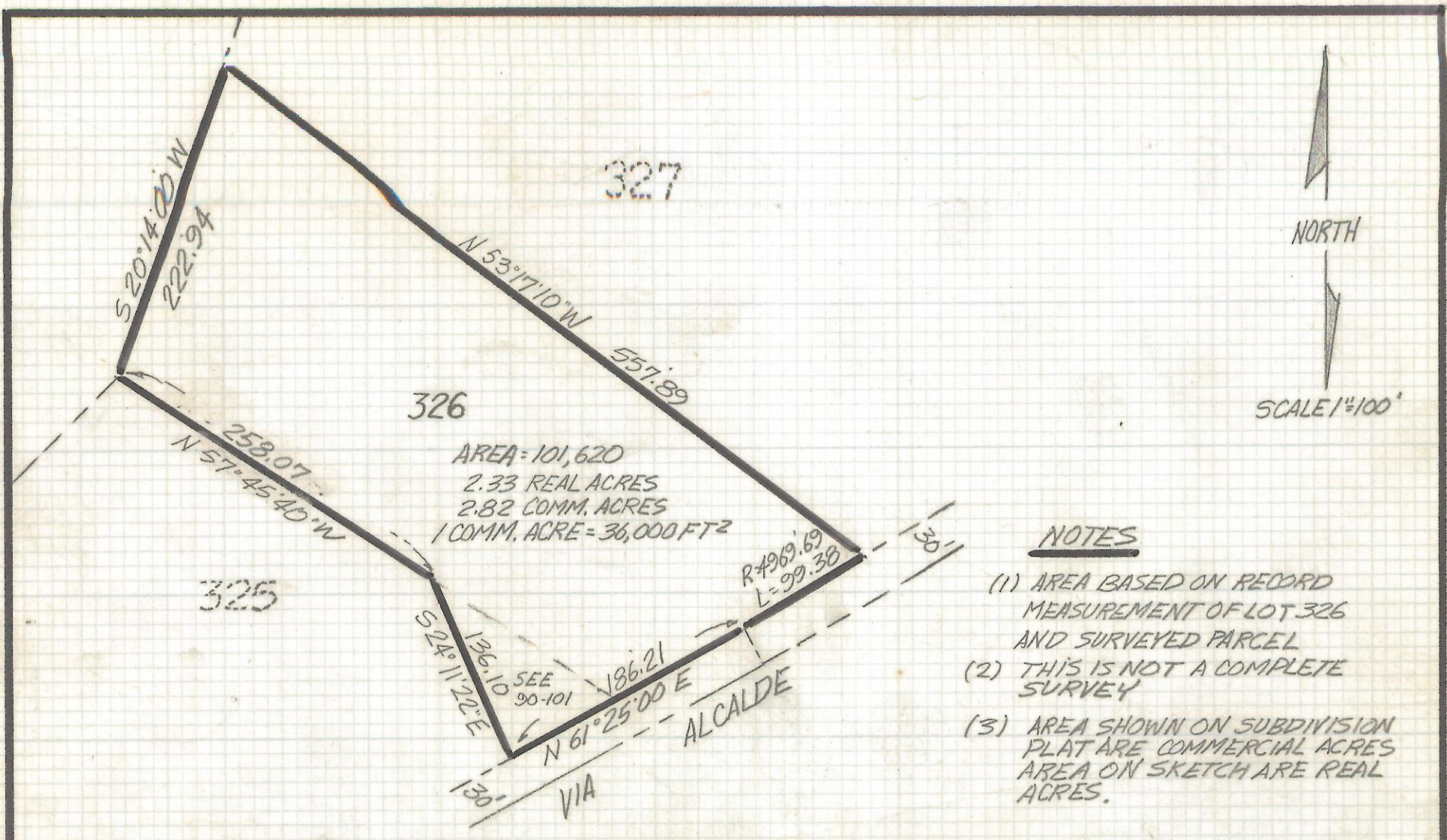


# **DISCLAIMER:**

**This unrecorded Record of Survey was donated to the City of Tucson. The City of Tucson provides this data for your personal use "as is." Additionally, the City of Tucson provides this information with the understanding that it is not guaranteed to be accurate, correct or complete and conclusions drawn from such information are the responsibility of the user.**





NOTES

- (1) AREA BASED ON RECORD MEASUREMENT OF LOT 326 AND SURVEYED PARCEL
- (2) THIS IS NOT A COMPLETE SURVEY
- (3) AREA SHOWN ON SUBDIVISION PLAT ARE COMMERCIAL ACRES AREA ON SKETCH ARE REAL ACRES.

SKETCH  
FOR

AREA OF LOT 326 AND A PORTION OF LOT 325 CATALINA FOOTHILLS ESTATES #3 RECORDED IN BOOK 9 OF MAPS AND PLATS AT PAGE 93 IN THE OFFICE OF THE PIMA COUNTY RECORDER PIMA COUNTY, ARIZONA



Z-2018-059

ROBERT F. MELLEN  
 REGISTERED LAND SURVEYOR  
 TUCSON, ARIZONA  
 JOB # 90-101

REVISED 5-2-91