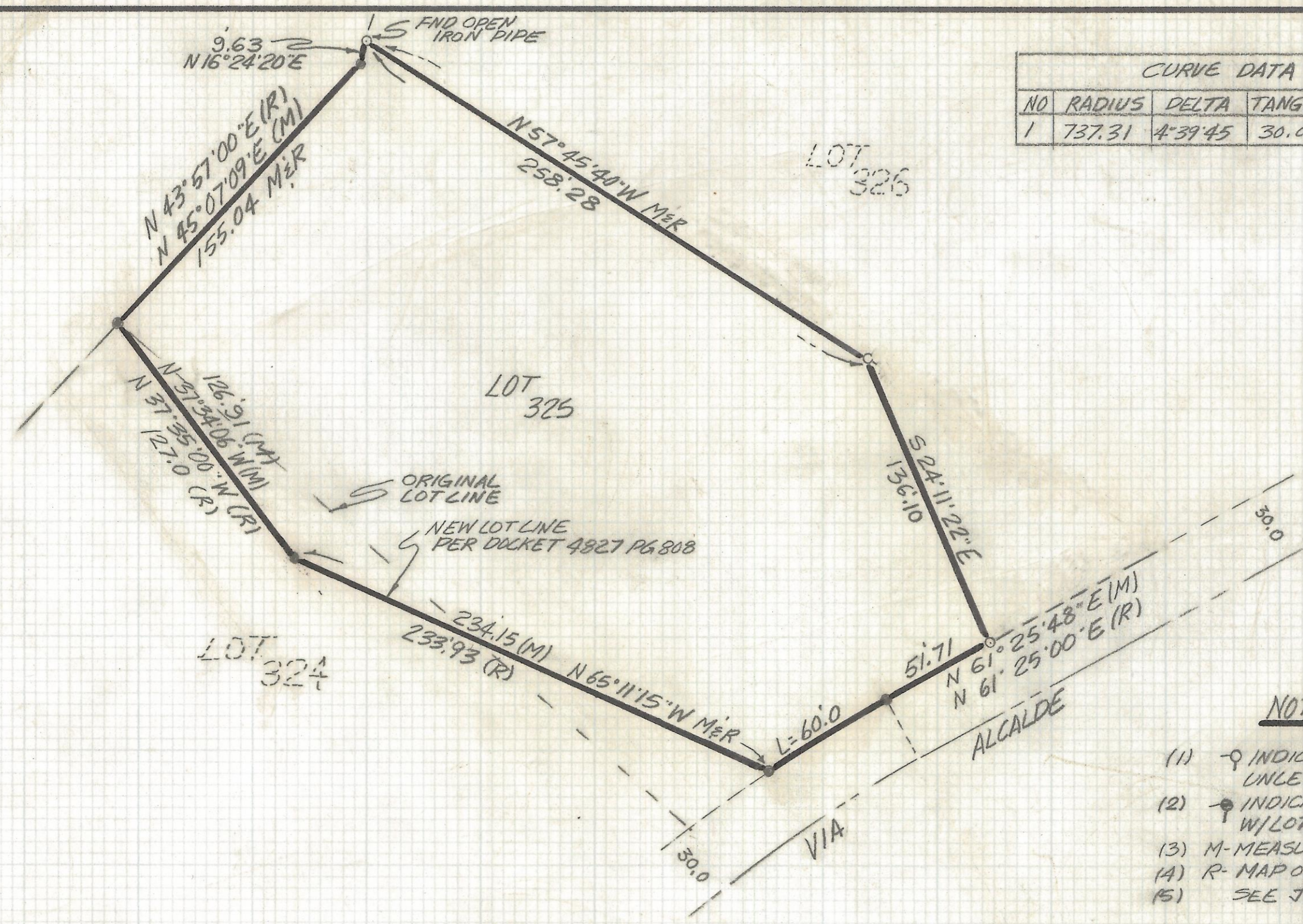
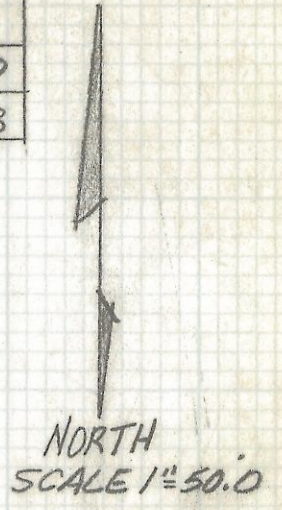


DISCLAIMER:

This unrecorded Record of Survey was donated to the City of Tucson. The City of Tucson provides this data for your personal use "as is." Additionally, the City of Tucson provides this information with the understanding that it is not guaranteed to be accurate, correct or complete and conclusions drawn from such information are the responsibility of the user.



CURVE DATA					
NO	RADIUS	DELTA	TANGENT	LENGTH	CHORD
1	737.31	4°39'45"	30.02	60.0	59.98

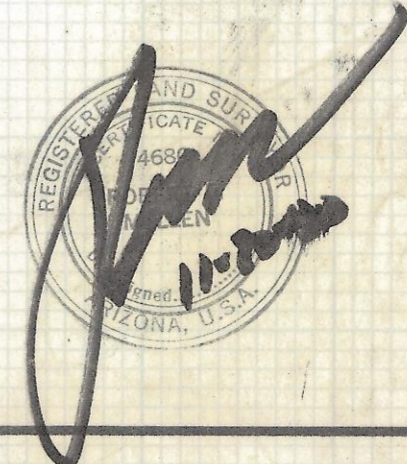


NOTES

- (1) \circ INDICATES SET 1/2" PIN MKD L.S. 4680 UNLESS NOTED
- (2) \bullet INDICATES FOUND LEAD CAPPED PIPE W/LOT NUMBERS
- (3) M- MEASURED
- (4) R- MAP OR DEED RECORD
- (5) SEE JOB # 89-137

SKETCH OF LEGAL DESCRIPTION

OF A PORTION OF LOTS 325 AND 324 OF CATALINA FOOTHILLS ESTATES NO. 3 AS SHOWN IN BOOK 9 OF MAPS AND PLATS AT PAGE 93 IN THE OFFICE OF THE PIMA COUNTY RECORDER PIMA COUNTY, ARIZONA



ROBERT F. MELLEN
REGISTERED LAND SURVEYOR
TUCSON, ARIZONA
JOB # 90-101

Z-2018-061