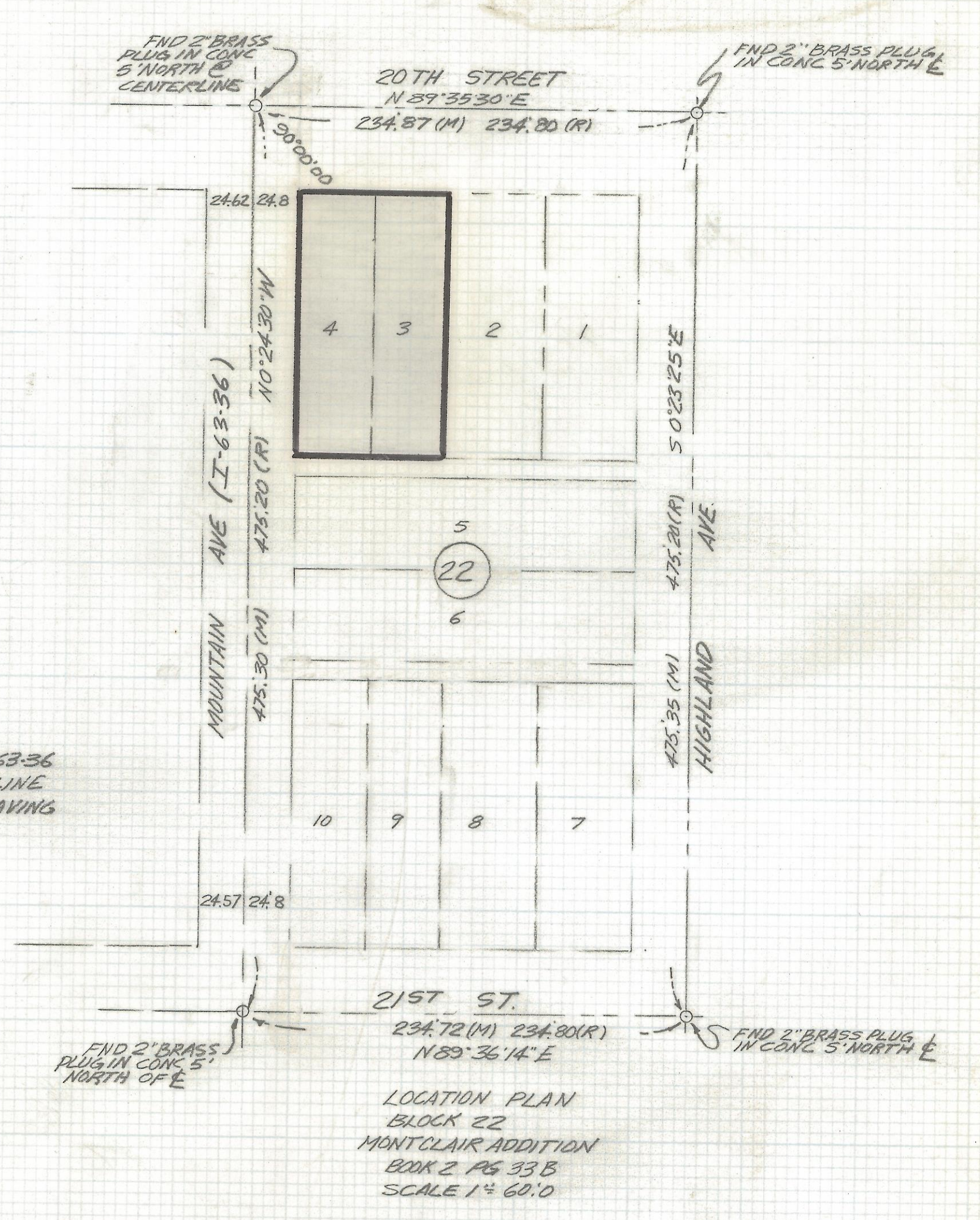
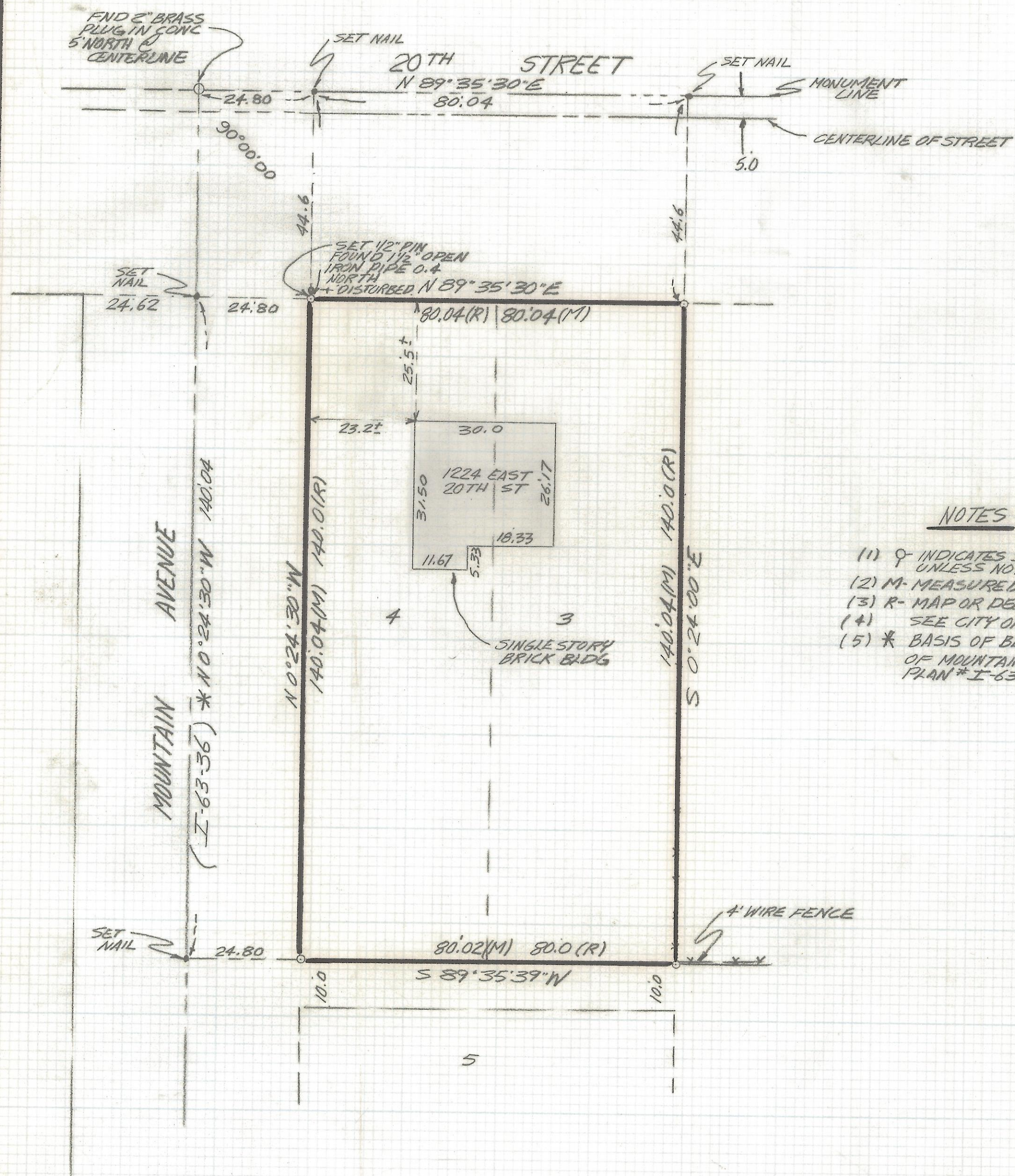


DISCLAIMER:

This unrecorded Record of Survey was donated to the City of Tucson. The City of Tucson provides this data for your personal use "as is." Additionally, the City of Tucson provides this information with the understanding that it is not guaranteed to be accurate, correct or complete and conclusions drawn from such information are the responsibility of the user.



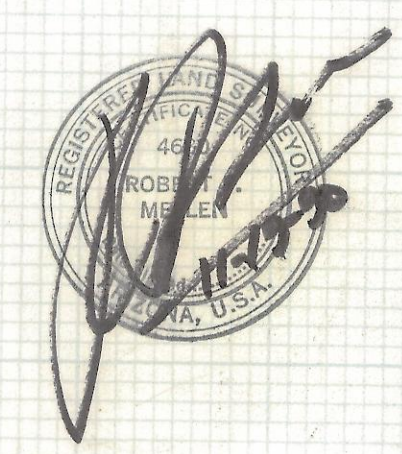
NOTES

- (1) ♀ INDICATES SET 1/2" PIN MKD I.S. 4680 UNLESS NOTED
- (2) M- MEASURED
- (3) R- MAP OR DEED RECORD
- (4) SEE CITY OF TULSON PAVING PLAN NO. I-63-36
- (5) * BASIS OF BEARING N 0° 24' 30" W CENTERLINE OF MOUNTAIN AVE PER CITY OF TULSON PAVING PLAN * I-63-36

RESULTS OF SURVEY

OF LOTS 3 AND 4 BLOCK 22 MONTCLAIR ADDITION AS RECORDED IN BOOK 2 OF MAPS AND PLATS AT PAGE 33B IN THE OFFICE OF THE PIMA COUNTY RECORDER PIMA COUNTY, ARIZONA

LOCATION PLAN
BLOCK 22
MONTCLAIR ADDITION
BOOK 2 PAGE 33B
SCALE 1" = 60.0'



Z-2018-062

REVISIONS	DATE
	DATE: 11-19-90
	DR BY: ENTCKBY: R.F.M.
	JOB NO. 90-102
	SHEET / OF 1.



ROBERT F. MELLEN
REGISTERED LAND SURVEYOR
1250 W. MOHAVE ST. TUCSON, ARIZONA
(602) 888-1012 SCALE: 1" = 20.0'