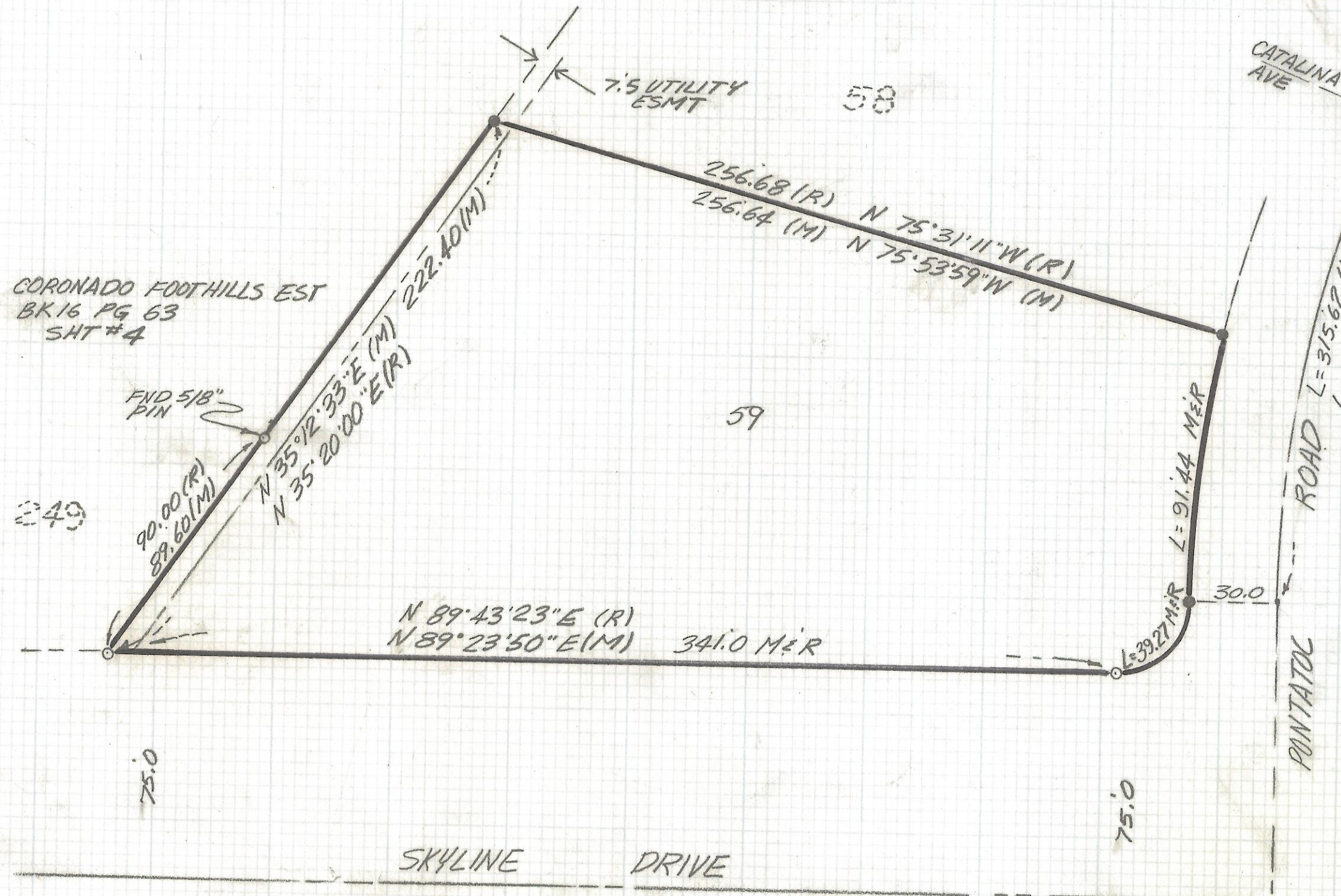


# **DISCLAIMER:**

**This unrecorded Record of Survey was donated to the City of Tucson. The City of Tucson provides this data for your personal use "as is." Additionally, the City of Tucson provides this information with the understanding that it is not guaranteed to be accurate, correct or complete and conclusions drawn from such information are the responsibility of the user.**



CURVE DATA					
NO	RADIUS	DELTA	TANGENT	LENGTH	CHORD
1	355.0	14°45'29"	45.97	91.44	91.19
2	25.0	90°00'	25.0	39.27	35.36



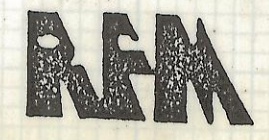
- NOTES**
- (1) ♀ INDICATES SET 1/2" PIN MKD L.S. 4680 UNLESS NOTED
  - (2) ♀ INDICATES FOUND 5/8" STEEL PIN
  - (3) M-MEASURED
  - (4) R-MAP OR DEED RECORD



**RESULTS OF SURVEY**

OF LOT 59 OF CORONADO FOOTHILLS ESTATES RECORDED IN BOOK 16 OF MAPS AND PLATS AT PAGE 4 IN THE OFFICE OF THE PIMA COUNTY RECORDER PIMA COUNTY ARIZONA

Z-2018-064

REVISIONS		DATE
		DATE: 11-23-90
ROBERT F. MELLEN REGISTERED LAND SURVEYOR 1250 W. MOHAVE ST. TUCSON, ARIZONA (602) 888-1012 SCALE: 1" =		DR BY: EMT CR BY: RFM JOB NO. 90-106 SHEET 1 OF 1