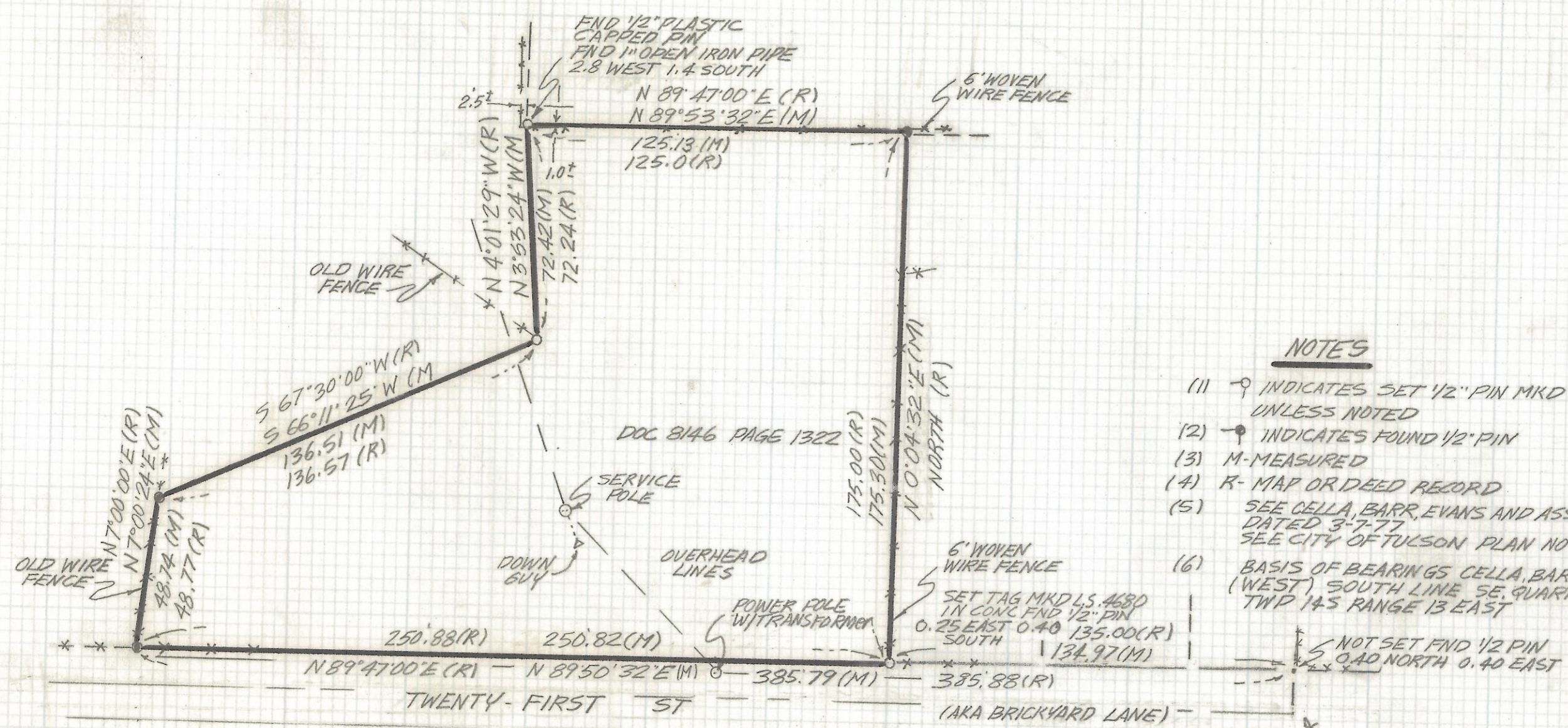


DISCLAIMER:

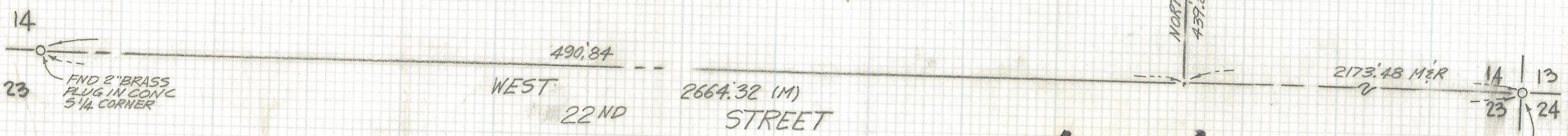
This unrecorded Record of Survey was donated to the City of Tucson. The City of Tucson provides this data for your personal use "as is." Additionally, the City of Tucson provides this information with the understanding that it is not guaranteed to be accurate, correct or complete and conclusions drawn from such information are the responsibility of the user.



SCALE 1"=40.0'

NOTES

- (1) \circ INDICATES SET 1/2" PIN MKD L.S. 4680 UNLESS NOTED
- (2) \bullet INDICATES FOUND 1/2" PIN
- (3) M-MEASURED
- (4) R-MAP OR DEED RECORD
- (5) SEE CELLA, BARR, EVANS AND ASSOC. JOB# 76289 DATED 3-7-77 SEE CITY OF TULSON PLAN NO R-78-01 SHEET 1 OF 3
- (6) BASIS OF BEARINGS CELLA, BARR, EVANS JOB# 76289 (WEST) SOUTH LINE SE. QUARTER SECTION 14 TWP 14 S RANGE 13 EAST



RESULTS OF SURVEY

OF A PORTION OF THE SOUTH HALF OF THE SOUTHEAST QUARTER OF SECTION 14 TOWNSHIP 14 SOUTH RANGE 13 EAST, GILA SALT RIVER BASE AND MERIDIAN, PIMA COUNTY, ARIZONA



ROBERT F. MELLEN
 REGISTERED LAND SURVEYOR
 TUCSON, ARIZONA
 JOB# 90-108

2-2018-065

CLEARPRINT ©