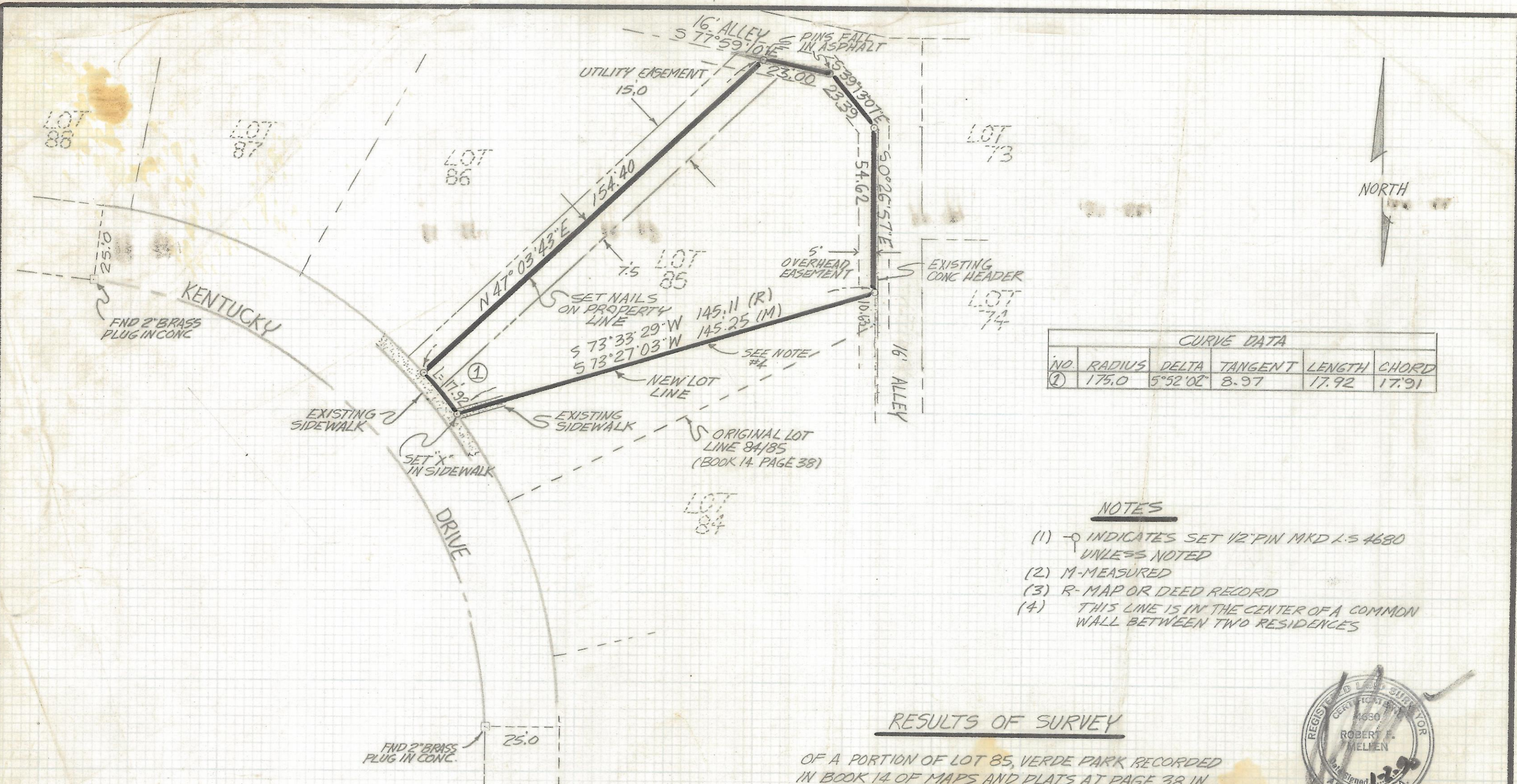


DISCLAIMER:

This unrecorded Record of Survey was donated to the City of Tucson. The City of Tucson provides this data for your personal use "as is." Additionally, the City of Tucson provides this information with the understanding that it is not guaranteed to be accurate, correct or complete and conclusions drawn from such information are the responsibility of the user.



CURVE DATA					
NO.	RADIUS	DELTA	TANGENT	LENGTH	CHORD
①	175.0	5°52'02"	8.97	17.92	17.91

- NOTES**
- (1) \odot INDICATES SET 1/2" PIN MKD L.S. 4680 UNLESS NOTED
 - (2) M-MEASURED
 - (3) R-MAP OR DEED RECORD
 - (4) THIS LINE IS IN THE CENTER OF A COMMON WALL BETWEEN TWO RESIDENCES

RESULTS OF SURVEY

OF A PORTION OF LOT 85, VERDE PARK RECORDED IN BOOK 14 OF MAPS AND PLATS AT PAGE 38 IN THE OFFICE OF THE PIMA COUNTY RECORDER PIMA COUNTY, ARIZONA



Z-2018-069

RFM	ROBERT F. MELLEN		REVISIONS	DATE
	REGISTERED LAND SURVEYOR		DATE: 12-31-91	
	1250 W. MOHAVE ST. TUCSON, ARIZONA		DR BY: EMT. CK BY: RFM	
	(602) 888-1012 SCALE: 1" = 30'		JOB NO. 90-119	SHEET 1 OF 1