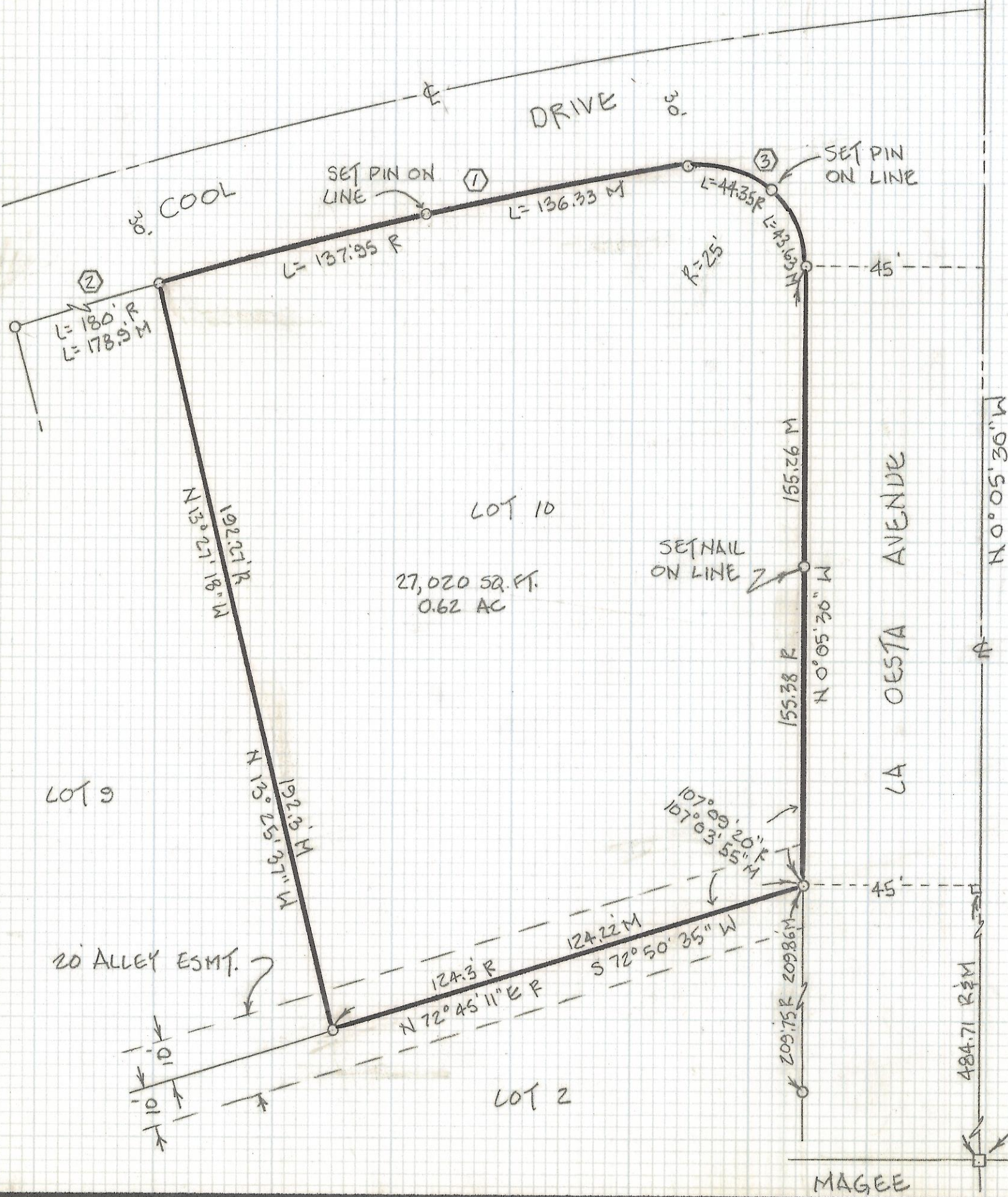


DISCLAIMER:

This unrecorded Record of Survey was donated to the City of Tucson. The City of Tucson provides this data for your personal use "as is." Additionally, the City of Tucson provides this information with the understanding that it is not guaranteed to be accurate, correct or complete and conclusions drawn from such information are the responsibility of the user.

CLEARPRINT



NOTES:

- 1) ♀ INDICATES 1/2" PIN FOUND UNLESS NOTED
- 2) R - MAP OR DEED RECORD
- 3) M - MEASURED

CURVE DATA

NO	DELTA	RADIUS	LENGTH	TANGENT	CHORD
1-M	6° 40' 34"	1170.0	136.33	68.24	136.25
2-M	8° 45' 40"	1170.0	178.90	89.62	178.73
3-M	99° 59' 31"	25.0	43.63	29.79	38.30

NORTH
SCALE: 1" = 30'

RESULTS OF SURVEY

OF LOT 10 OF SUNSET MANOR AS RECORDED
IN BOOK 11 OF MAPS AND PLATS AT PAGE 97
IN THE OFFICE OF THE PIMA COUNTY RECORDER,
PIMA COUNTY, ARIZONA.



Z-2018-075

ROBERT F. MELLEN
REGISTERED LAND SURVEYOR
TUCSON, ARIZONA
JOB 89-13