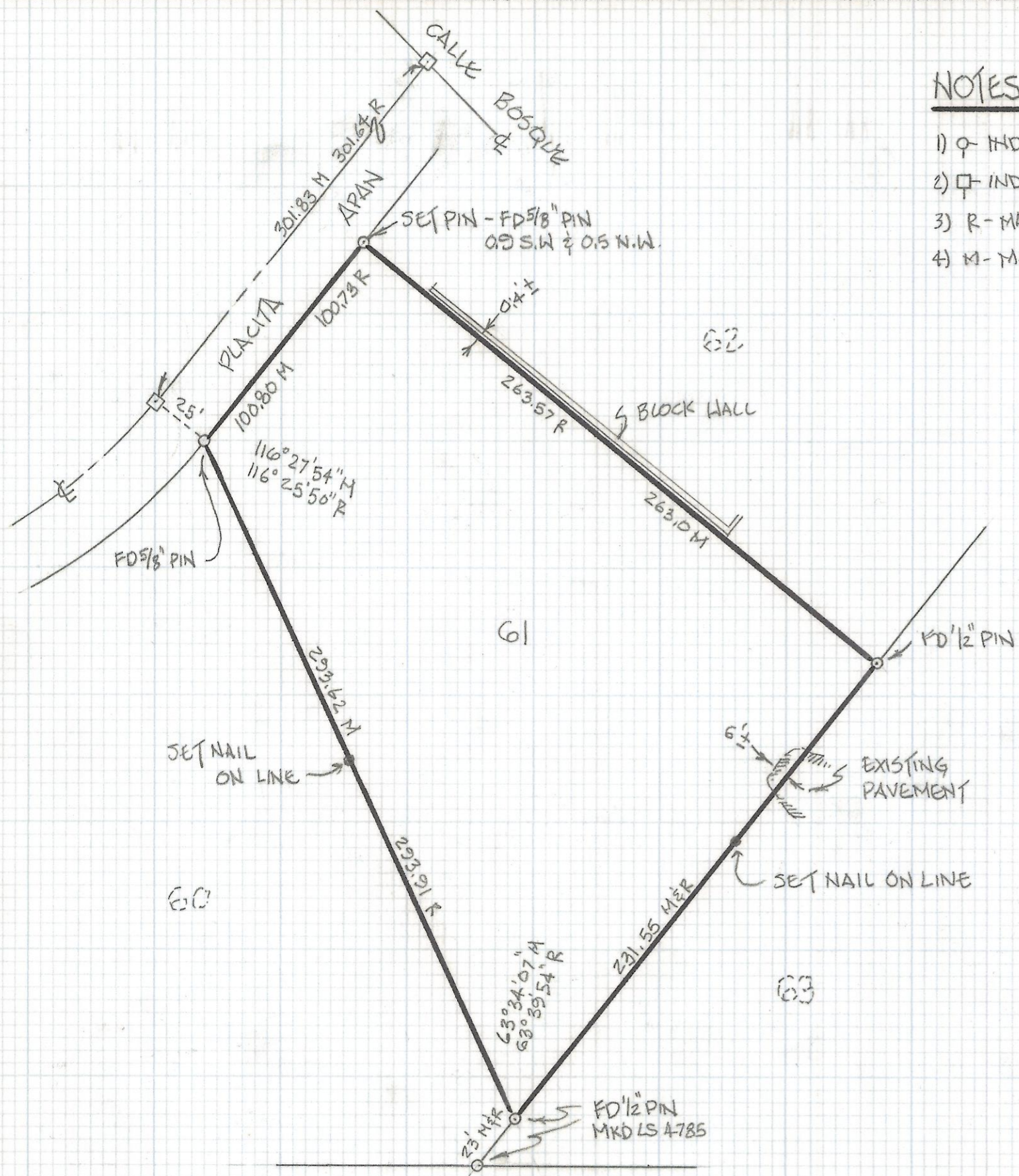


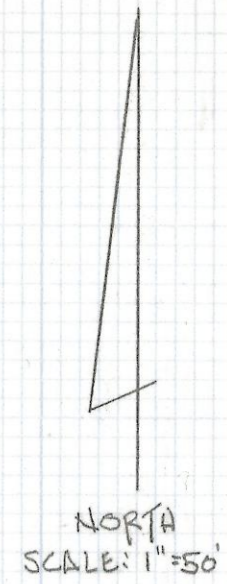
DISCLAIMER:

This unrecorded Record of Survey was donated to the City of Tucson. The City of Tucson provides this data for your personal use "as is." Additionally, the City of Tucson provides this information with the understanding that it is not guaranteed to be accurate, correct or complete and conclusions drawn from such information are the responsibility of the user.



NOTES:

- 1) ♀ INDICATES 1/2" PIN MKD LS 4680 SET UNLESS NOTED
- 2) ⊕ INDICATES 2" BRASS PLUG IN CONC. MKD LS 4785 FOUND
- 3) R - MAP OR DEED RECORD
- 4) M - MEASURED



RESULTS OF SURVEY

OF LOT 61 OF LOS CERROS DE KINO AS RECORDED IN BOOK 27 OF MAPS AND PLATS AT PAGE 34 IN THE OFFICE OF THE PINA COUNTY RECORDER, PINA COUNTY, ARIZONA.

FLECHA CAIDA RANCH ESTATES NO. 6
BK 13 PG 82 M&P



ROBERT P. MELLEN
REGISTERED LAND SURVEYOR
TUCSON, ARIZONA
JOB 89-17

Z-2018-079