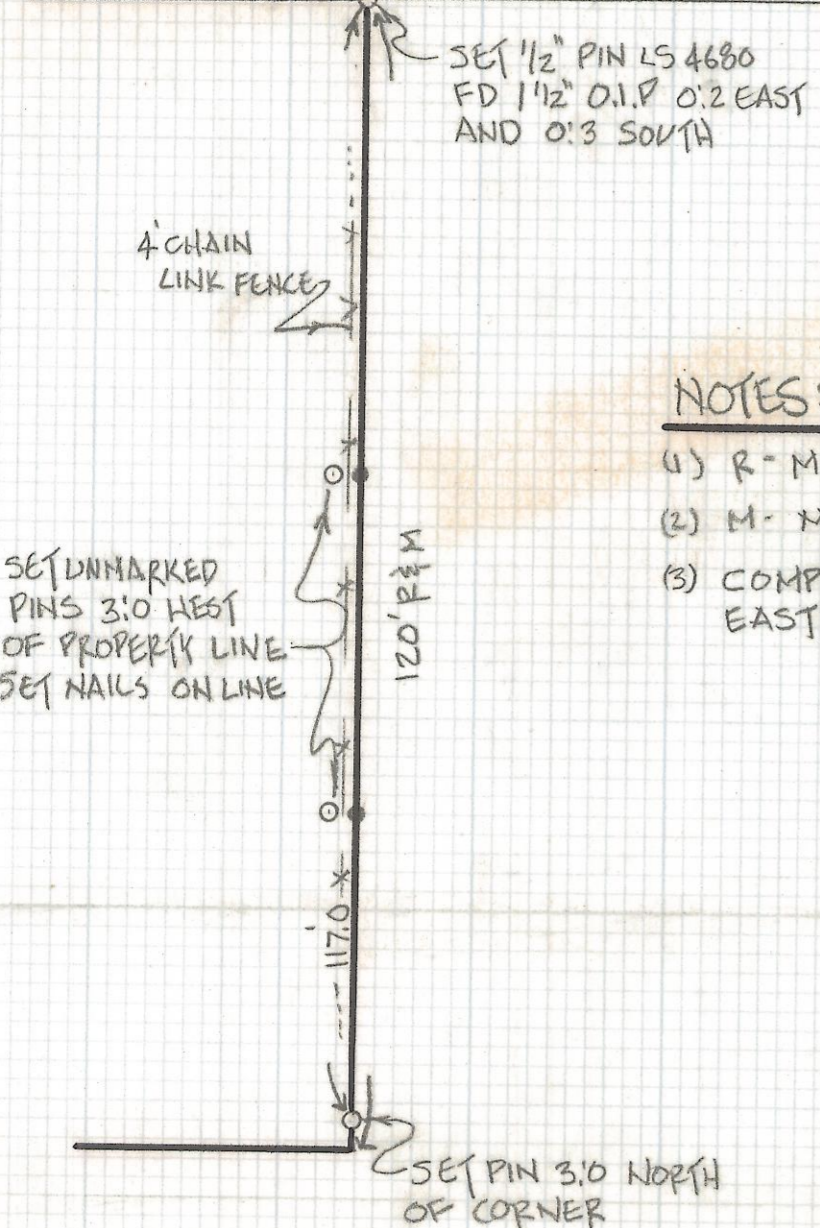
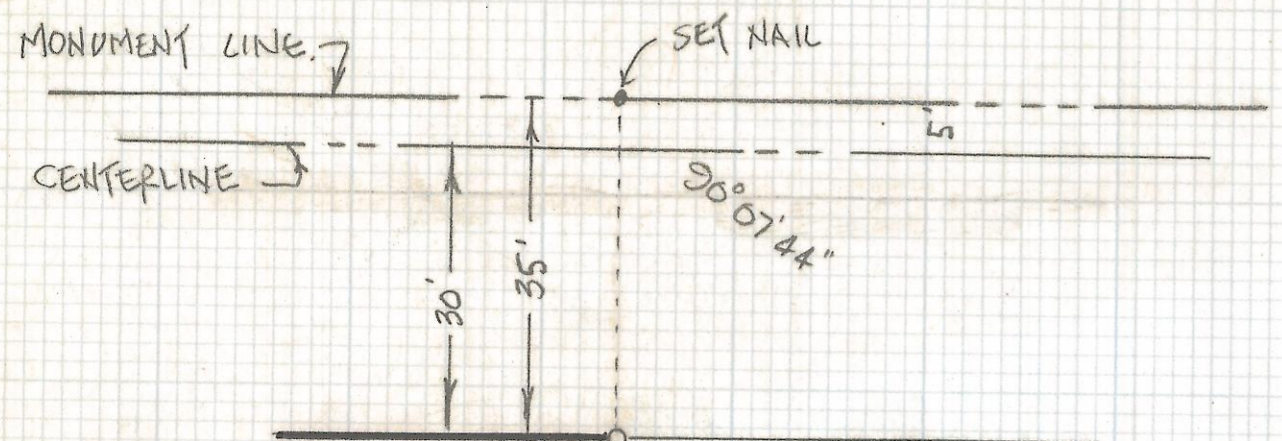
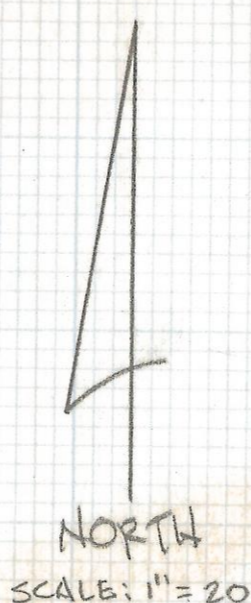


DISCLAIMER:

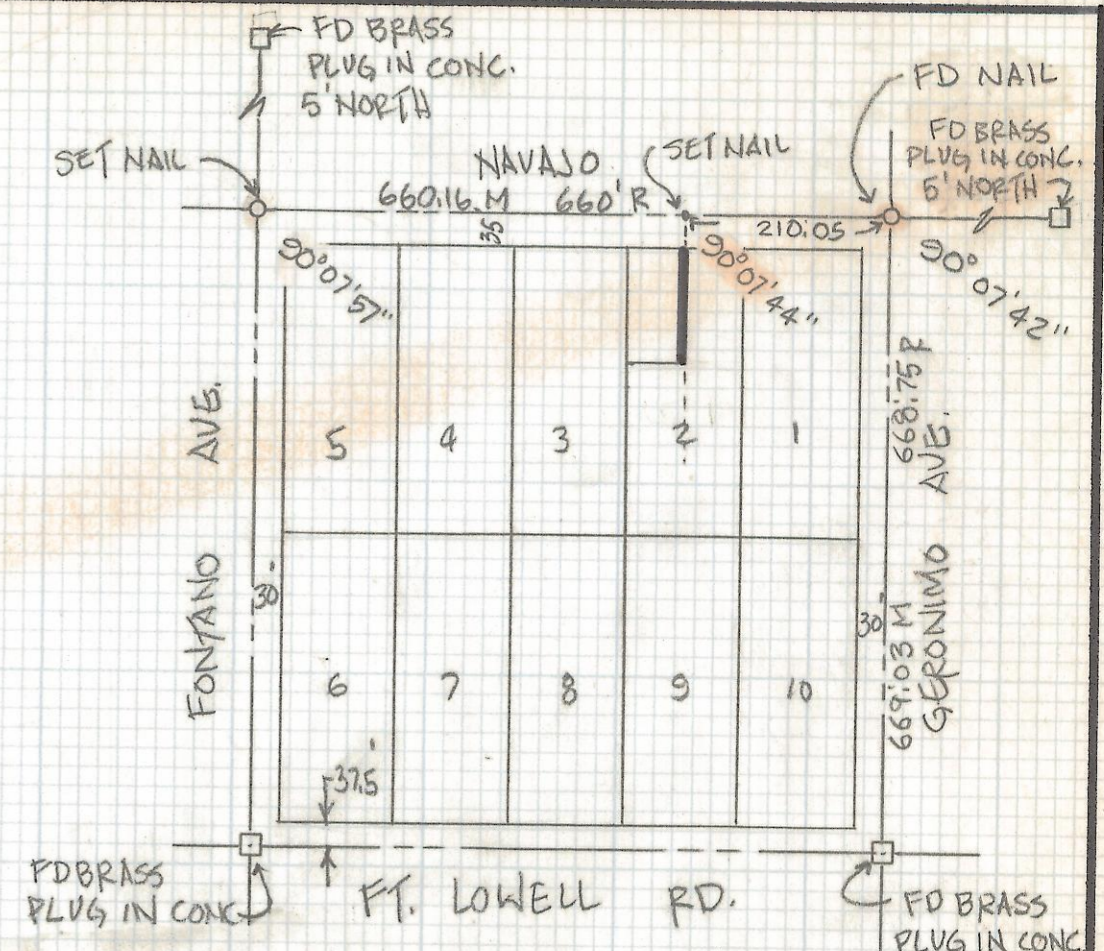
This unrecorded Record of Survey was donated to the City of Tucson. The City of Tucson provides this data for your personal use "as is." Additionally, the City of Tucson provides this information with the understanding that it is not guaranteed to be accurate, correct or complete and conclusions drawn from such information are the responsibility of the user.



SET 1/2" PIN LS 4680
 FD 1 1/2" O.I.P 0.2 EAST
 AND 0.3 SOUTH



- NOTES:**
- (1) R - MAP OR DEED RECORD
 - (2) M - MEASURED
 - (3) COMPLETE BOUNDARY NOT SURVEYED - EAST LINE ONLY.



LOCATION MAP
 SCALE: 1" = 200'

RESULTS OF SURVEY

OF A PORTION OF THE WEST 60 FEET OF THE NORTH 120 FEET OF LOT 2 OF BLOCK 14 OF GARDEN HOMES AS RECORDED IN BOOK 6 OF MAPS AND PLATS AT PAGE 41 IN THE OFFICE OF THE PIMA COUNTY RECORDER, PIMA COUNTY, ARIZONA.



ROBERT F. MELLEN
 REGISTERED LAND SURVEYOR
 TUCSON, ARIZONA
 JOB - 89-21
 Z-2018-082