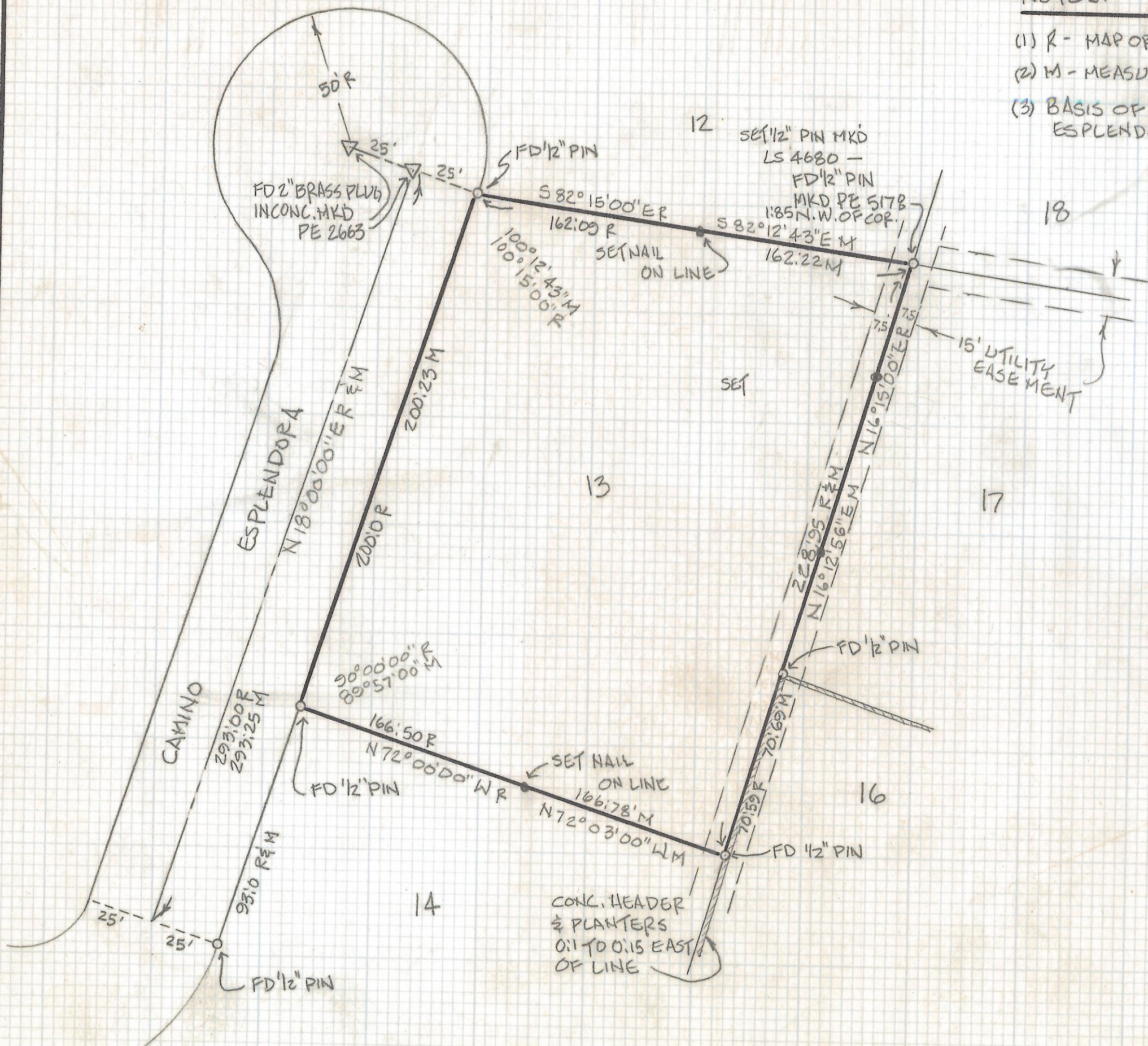
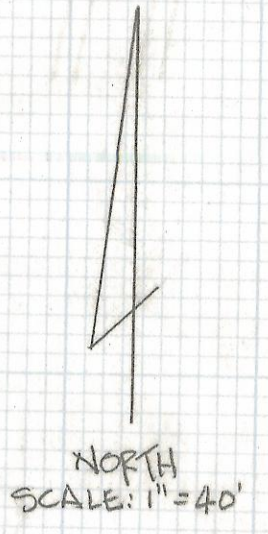


DISCLAIMER:

This unrecorded Record of Survey was donated to the City of Tucson. The City of Tucson provides this data for your personal use "as is." Additionally, the City of Tucson provides this information with the understanding that it is not guaranteed to be accurate, correct or complete and conclusions drawn from such information are the responsibility of the user.



- NOTES:
- (1) R - MAP OR DEED RECORD
 - (2) M - MEASURED
 - (3) BASIS OF BEARINGS - \perp CAMINO ESPLENDORA, N18°00'00"E



RESULTS OF SURVEY

OF LOT 13 OF SKYLINE BELAIR ESTATES AS RECORDED IN BOOK 17 OF MAPS AND PLATS AT PAGE 93 IN THE OFFICE OF THE PIMA COUNTY RECORDER, PIMA COUNTY, ARIZONA.



ROBERT F. MELLEN
REGISTERED LAND SURVEYOR
TUCSON, ARIZONA
JOB 89-29

Z-2018-088

CLEARPRINT