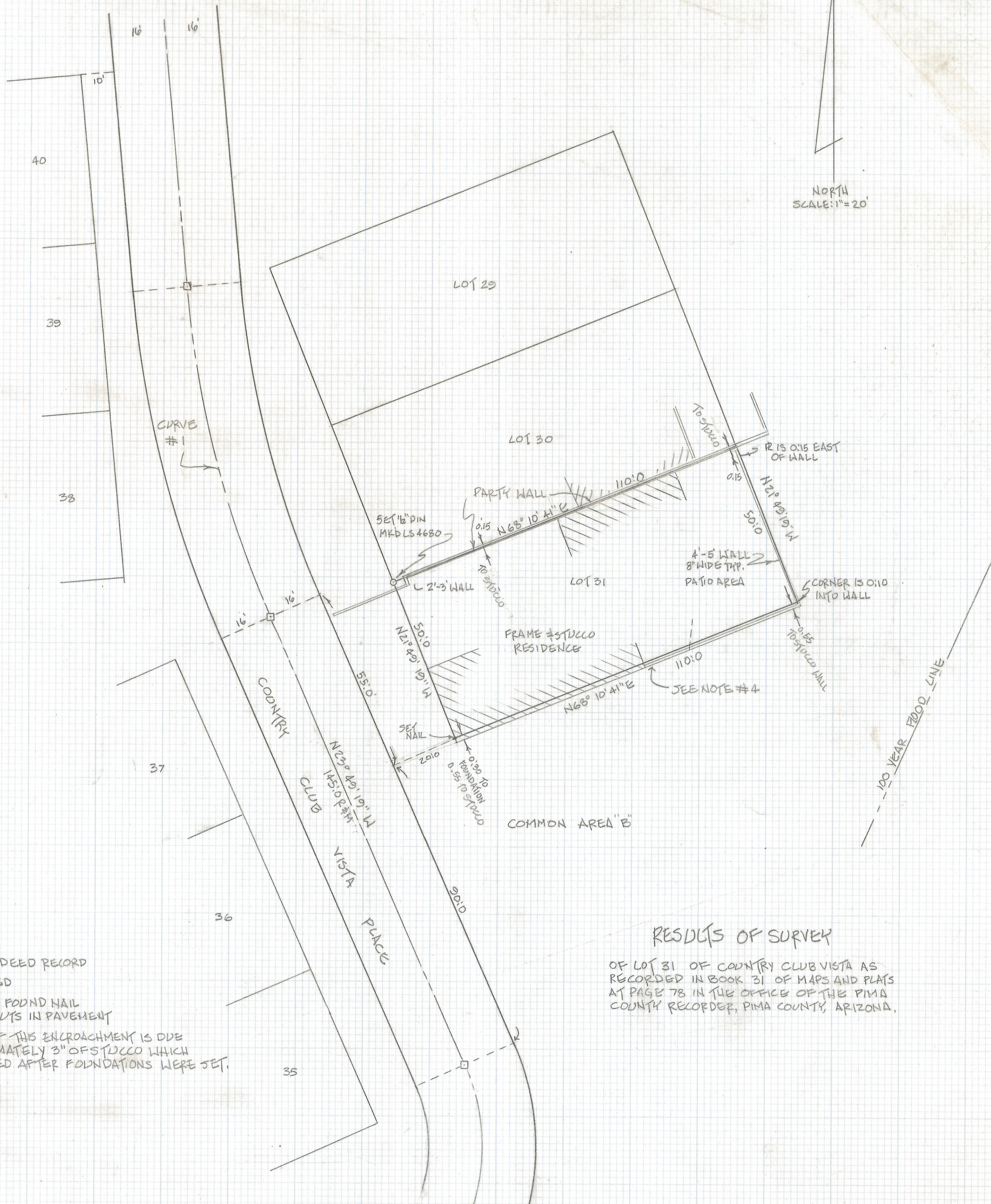


# **DISCLAIMER:**

**This unrecorded Record of Survey was donated to the City of Tucson. The City of Tucson provides this data for your personal use "as is." Additionally, the City of Tucson provides this information with the understanding that it is not guaranteed to be accurate, correct or complete and conclusions drawn from such information are the responsibility of the user.**





NOTES:

- (1) R - MAP OR DEED RECORD
- (2) M - MEASURED
- (3)  $\square$  INDICATES FOUND NAIL AND CROSSOLTS IN PAVEMENT
- (4) A PORTION OF THIS ENCROACHMENT IS DUE TO APPROXIMATELY 3" OF STUCCO WHICH WAS APPLIED AFTER FOUNDATIONS WERE SET.

RESULTS OF SURVEY

OF LOT 31 OF COUNTRY CLUB VISTA AS RECORDED IN BOOK 31 OF MAPS AND PLATS AT PAGE 78 IN THE OFFICE OF THE PIMA COUNTY RECORDER, PIMA COUNTY, ARIZONA.

CURVE DATA

NO.	DELTA	RADIUS	LENGTH	TANGENT	CHORD
I-M	17°58'	320.45	100.49	50.66	100.08
I-R	18°00'	320.45	100.53	50.68	100.12



ROBERT F. MELLEN  
REGISTERED LAND SURVEYOR  
TUCSON, ARIZONA  
89-30

Z-2018-089