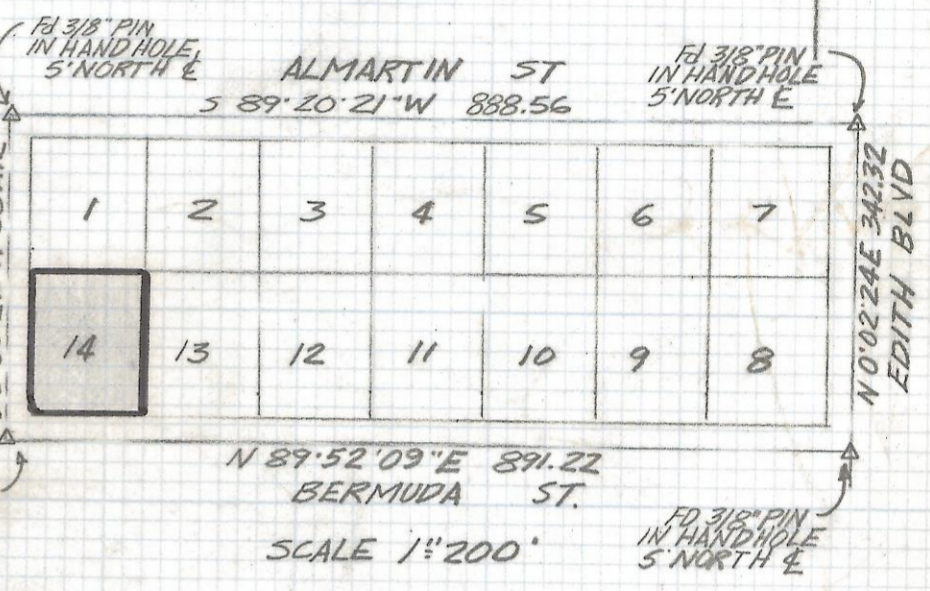
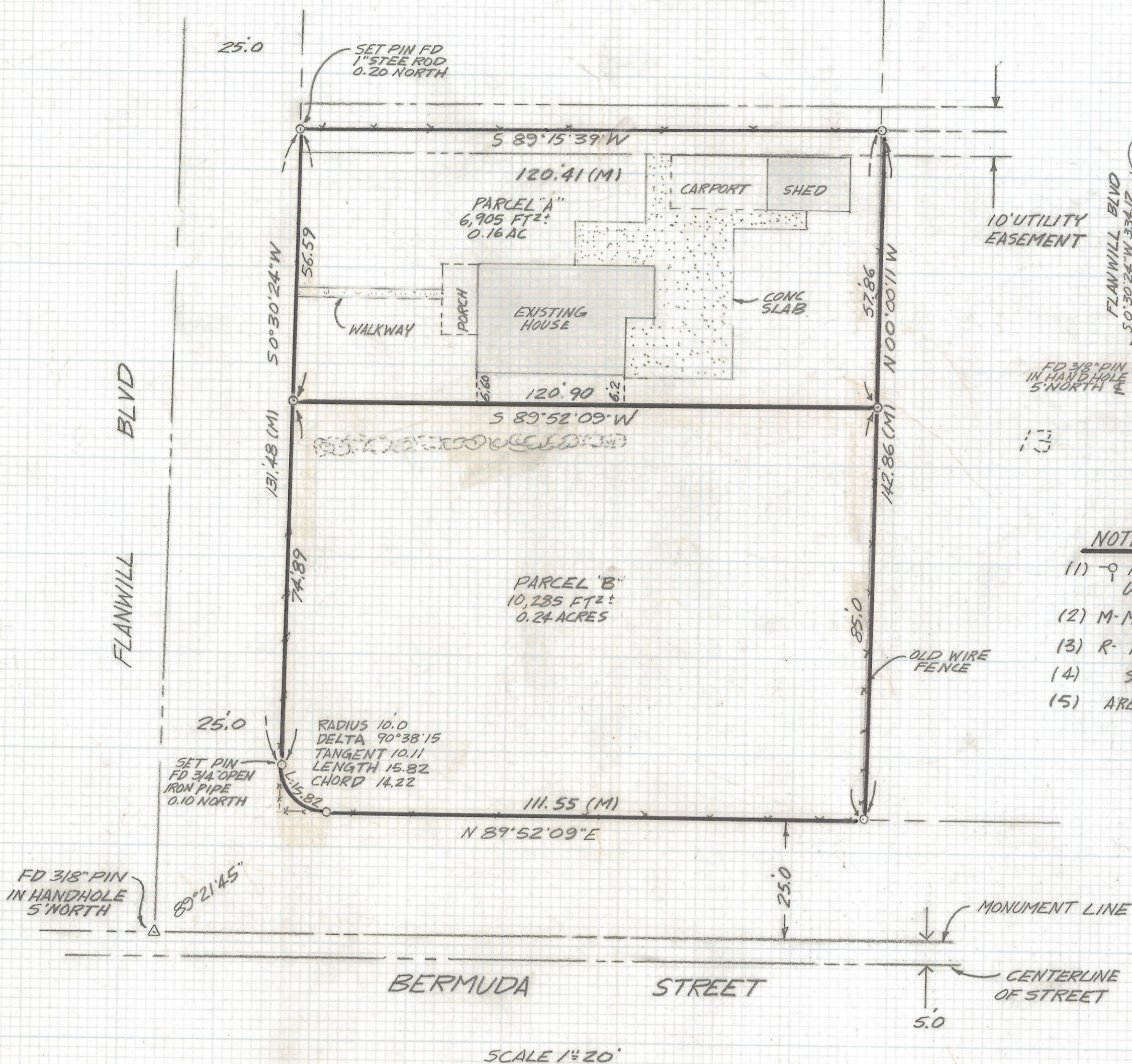


DISCLAIMER:

This unrecorded Record of Survey was donated to the City of Tucson. The City of Tucson provides this data for your personal use "as is." Additionally, the City of Tucson provides this information with the understanding that it is not guaranteed to be accurate, correct or complete and conclusions drawn from such information are the responsibility of the user.



NOTES

- (1) - ϕ INDICATES SET 1/2" PIN MKD L.S. 4680 UNLESS NOTED
- (2) M- MEASURED
- (3) R- MAP OR DEED RECORD
- (4) SEE JOB # 89-24
- (5) AREA OF LOT 14 17,190 FT² 0.39 ACRES

RESULTS OF SURVEY

OF LOT 14 BLOCK 2 OF ALMARTIN ADDITION RECORDED IN BOOK 7 OF MAPS AND PLATS AT PAGE 53 IN THE OFFICE OF THE PIMA COUNTY RECORDER PIMA COUNTY ARIZONA



ROBERT F. MELLEN
 REGISTERED LAND SURVEYOR
 TUCSON, ARIZONA
 JOB # 89-36

Z-2018-092