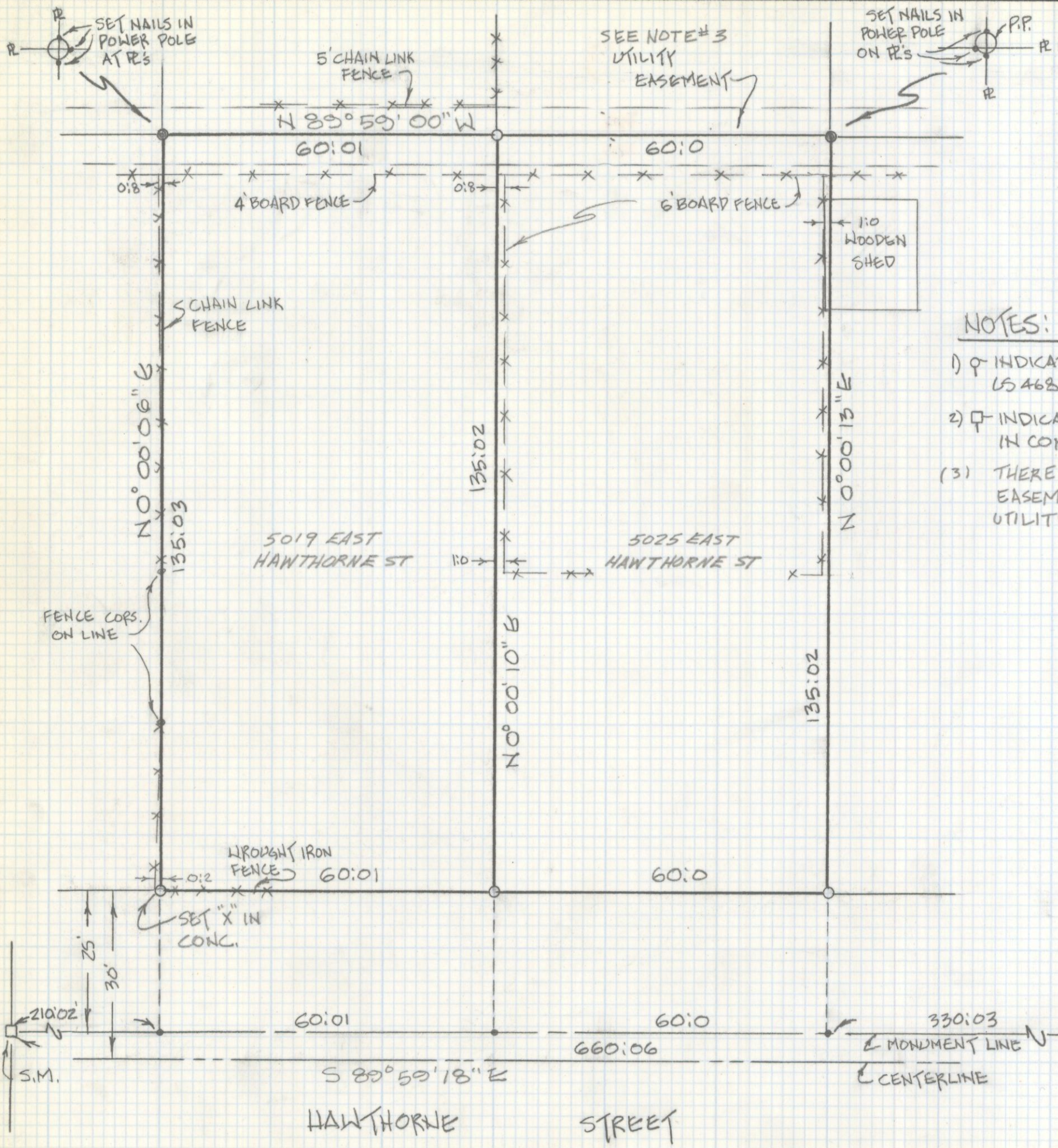
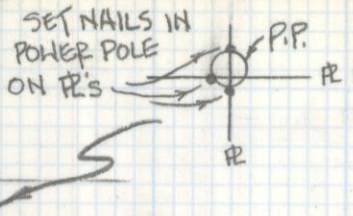


DISCLAIMER:

This unrecorded Record of Survey was donated to the City of Tucson. The City of Tucson provides this data for your personal use "as is." Additionally, the City of Tucson provides this information with the understanding that it is not guaranteed to be accurate, correct or complete and conclusions drawn from such information are the responsibility of the user.



SEE NOTE #3
UTILITY
EASEMENT

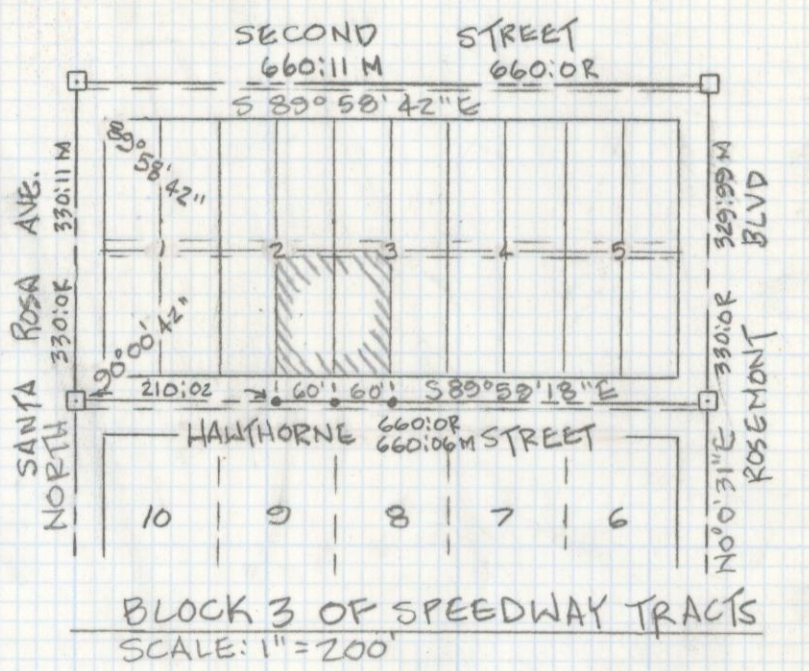


NOTES:

- 1) ϕ INDICATES 1/2" AN MKD
LS 4680 SET UNLESS NOTED
- 2) \square INDICATES 2" BRASS PLUG
IN CONC. FD, 5' NORTH ϕ
- 3) THERE APPEARS TO BE A UTILITY
EASEMENT ALONG THIS LINE CHECK
UTILITY COMPANY FOR WIDTH

RESULTS OF SURVEY

OF A PORTION OF LOT 2 AND 3 OF BLOCK 3 OF SPEEDWAY TRACTS AS RECORDED IN BOOK 4 OF MAPS AND PLATS AT PAGE 48 IN THE OFFICE OF THE PIMA COUNTY RECORDER, PIMA COUNTY, ARIZONA.



ROBERT P. MELLEN
REGISTERED LAND SURVEYOR
TUCSON, ARIZONA
JOB 89-44

Z-2018-098

SCALE: 1" = 20'