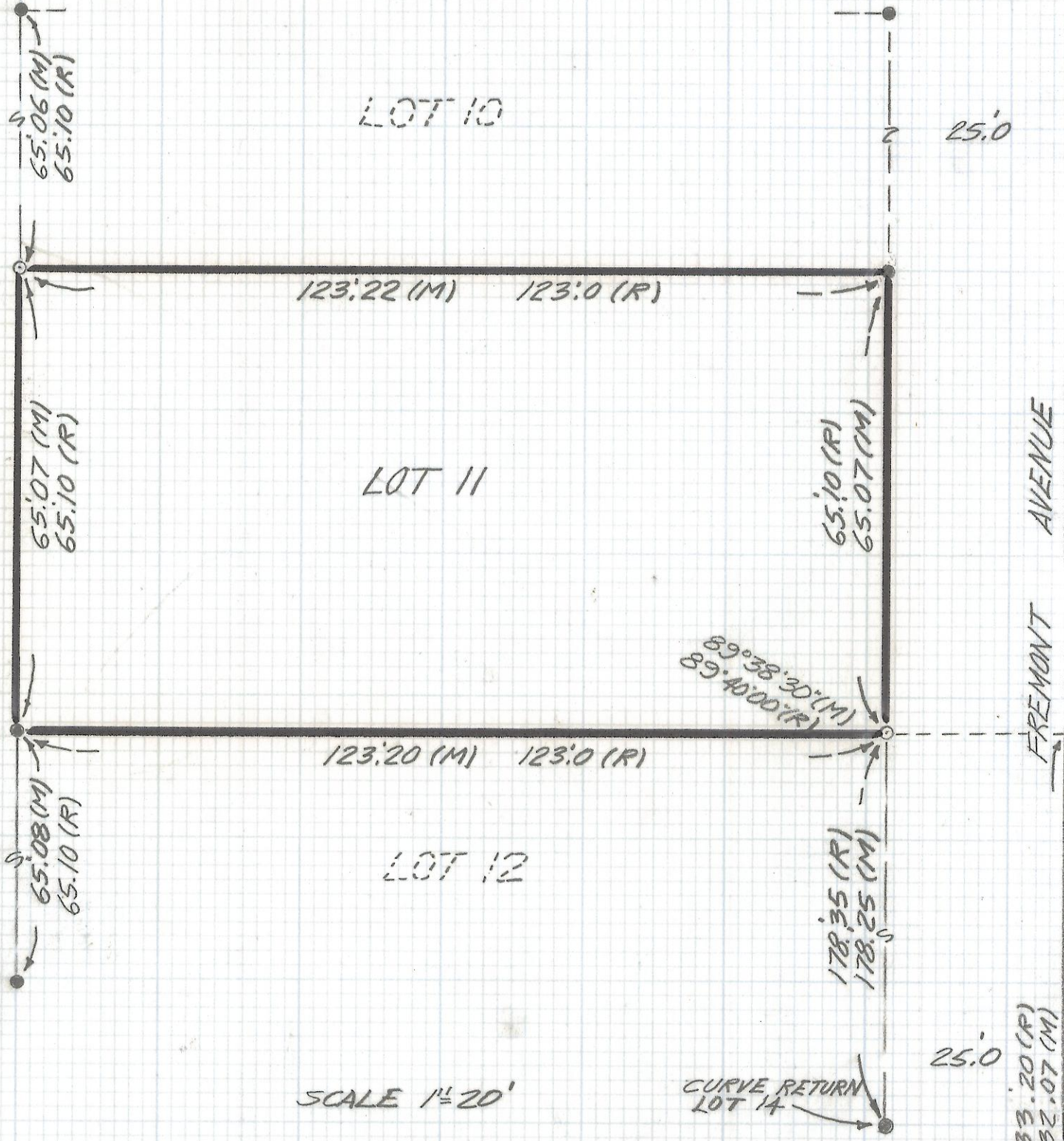


DISCLAIMER:

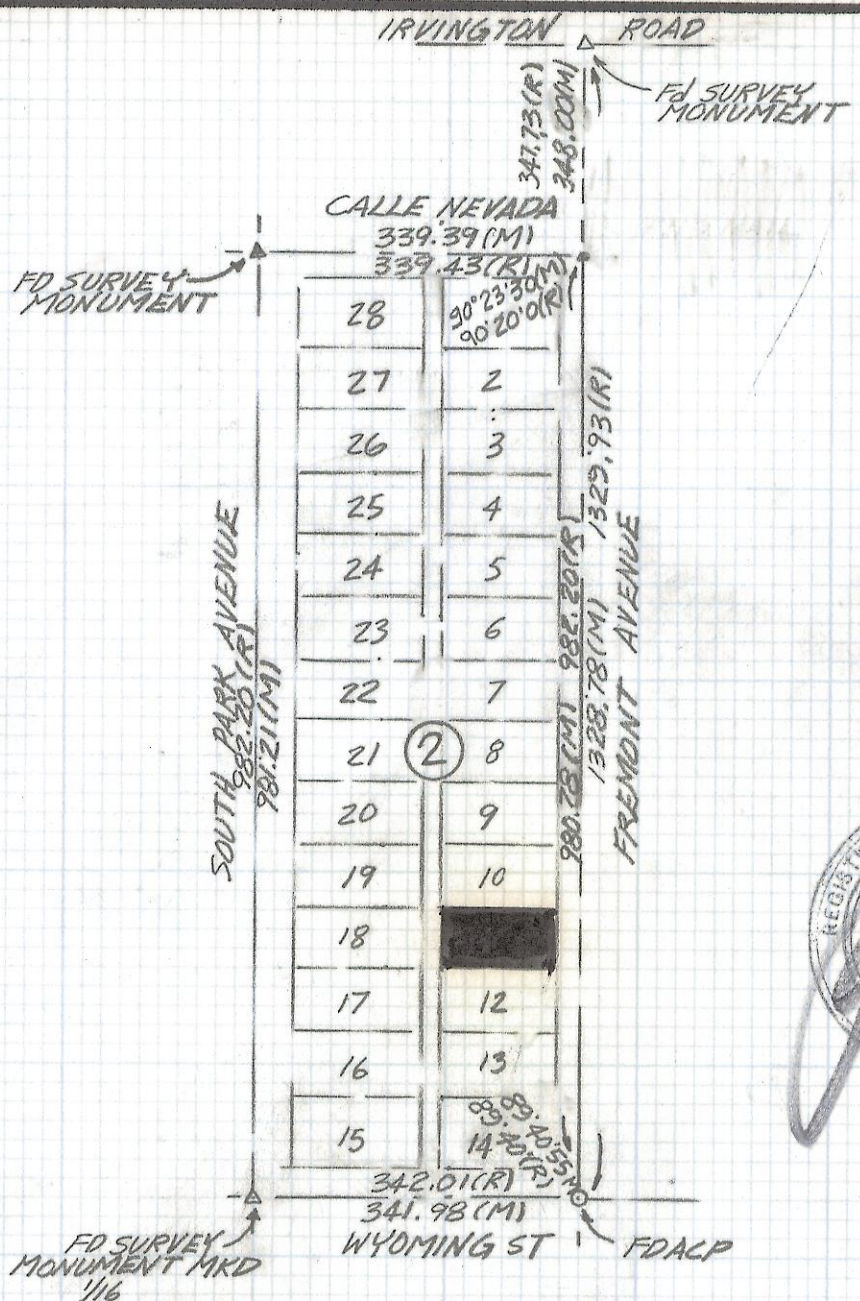
This unrecorded Record of Survey was donated to the City of Tucson. The City of Tucson provides this data for your personal use "as is." Additionally, the City of Tucson provides this information with the understanding that it is not guaranteed to be accurate, correct or complete and conclusions drawn from such information are the responsibility of the user.

20' ALLEY



RESULTS OF SURVEY

OF LOT 11 OF BLOCK 2 OF IRVINGTON PARK SUBDIVISION
 RECORDED IN BOOK 9 OF MAPS AND PLATS AT PAGE 98
 IN THE OFFICE OF THE PIMA COUNTY RECORDER PIMA
 COUNTY, ARIZONA



NOTES

- (1) ● INDICATES FOUND 5/8" PIN UNLESS NOTED
- (2) ○ INDICATES SET 1/2" PIN MKD L.S. 4680 UNLESS NOTED
- (3) (M) - MEASURED
- (4) (R) - MAP OR DEED RECORD
- (5) SURVEY MONUMENTS IN WYOMING STREET DO NOT AGREE WITH INTERNAL CORNERS FOUND IN BLOCK 2
- (6) SEE BOOK 1381 - P 74 - C.O.T



(SEE NOTE #5)
 - END ACP

WYOMING STREET

ROBERT F. MELLEN
 REGISTERED LAND SURVEYOR
 TULSON, ARIZONA
 JOB # 89-47

Z-2018-100