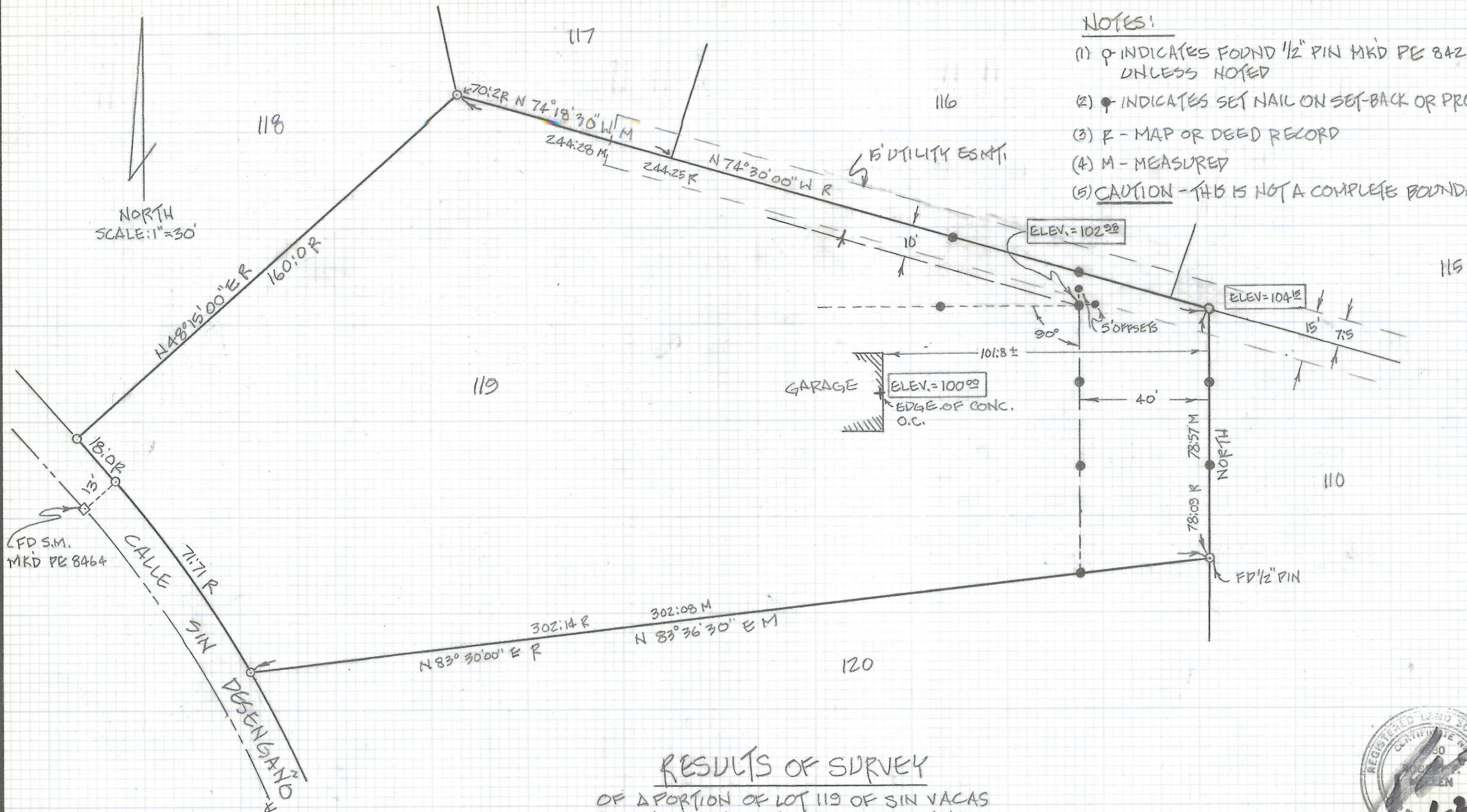


DISCLAIMER:

This unrecorded Record of Survey was donated to the City of Tucson. The City of Tucson provides this data for your personal use "as is." Additionally, the City of Tucson provides this information with the understanding that it is not guaranteed to be accurate, correct or complete and conclusions drawn from such information are the responsibility of the user.

NORTH
SCALE: 1" = 30'



NOTES:

- (1) P INDICATES FOUND 1/2" PIN MKD PE 8424 UNLESS NOTED
- (2) N INDICATES SET NAIL ON SET-BACK OR PROP. LINES
- (3) R - MAP OR DEED RECORD
- (4) M - MEASURED
- (5) CAUTION - THIS IS NOT A COMPLETE BOUNDARY SURVEY

RESULTS OF SURVEY

OF A PORTION OF LOT 119 OF SIN VACAS AS SHOWN IN BOOK 28 OF MAPS AND PLATS AT PAGE 54 IN THE OFFICE OF THE PIMA COUNTY RECORDER, PIMA COUNTY, ARIZONA.



ROBERT F. MELLEN
REGISTERED LAND SURVEYOR
TUCSON, ARIZONA
JOB 89-49

Z-2018-102