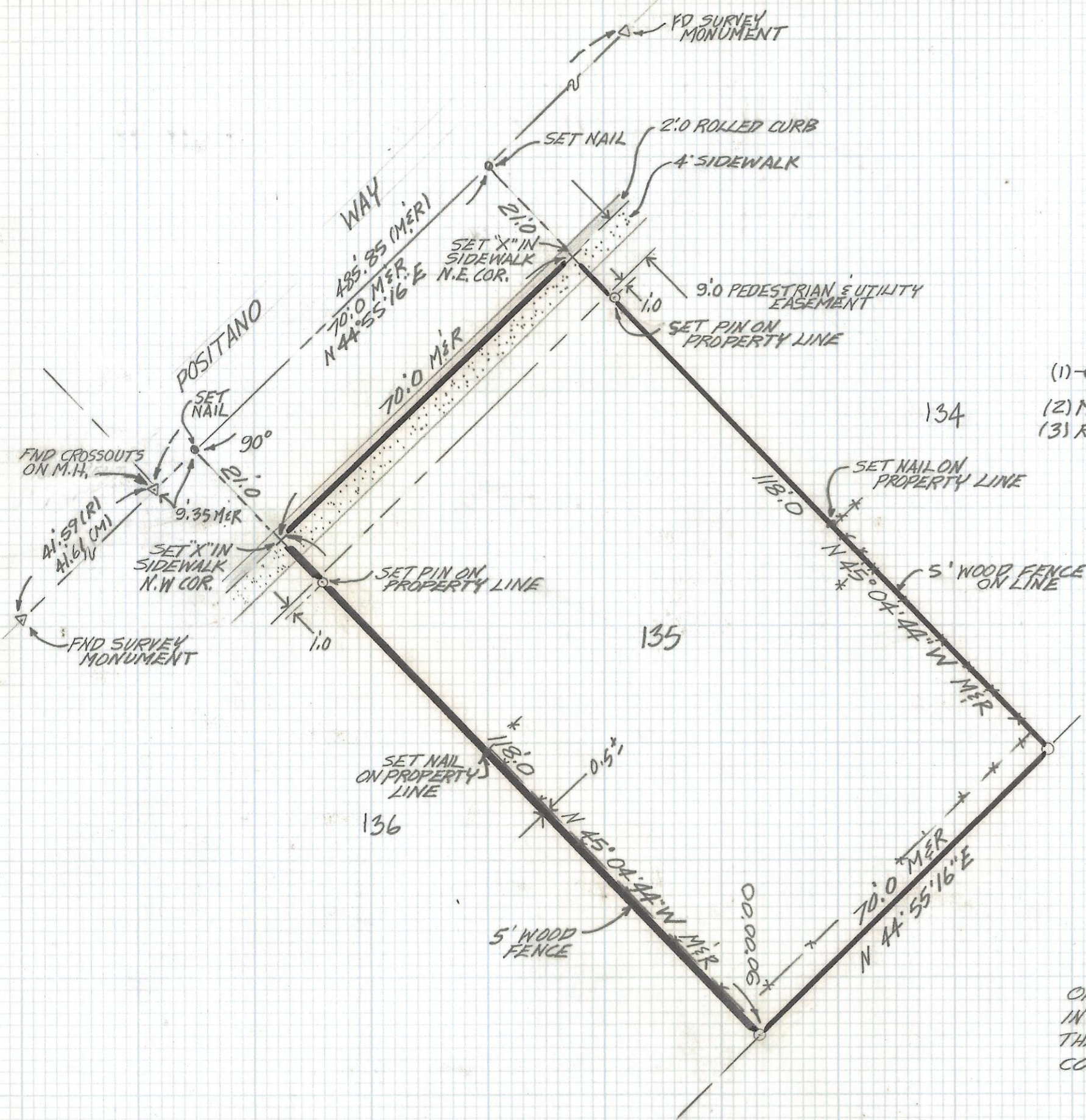


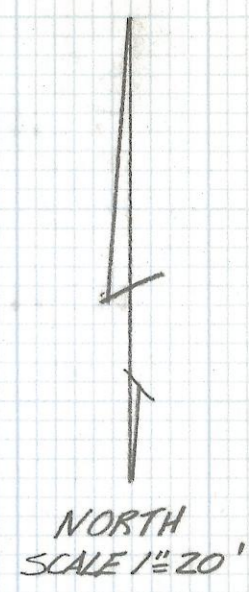
# **DISCLAIMER:**

**This unrecorded Record of Survey was donated to the City of Tucson. The City of Tucson provides this data for your personal use "as is." Additionally, the City of Tucson provides this information with the understanding that it is not guaranteed to be accurate, correct or complete and conclusions drawn from such information are the responsibility of the user.**



NOTES

- (1) -  $\circ$  INDICATES SET 1/2" PIN MKD L.S. 4680 UNLESS NOTED
- (2) M - MEASURED
- (3) R - MAP OR DEED RECORD



RESULTS OF SURVEY

OF LOT 135 OF NORTH POINT TERRACE RECORDED  
IN BOOK 30 OF MAPS AND PLATS AT PAGE 32 IN  
THE OFFICE OF THE PIMA COUNTY RECORDER PIMA  
COUNTY ARIZONA.

2-2018-105  
ROBERT F. MELLEN  
REGISTERED LAND SURVEYOR  
TULSON, ARIZONA  
JOB # 89-53