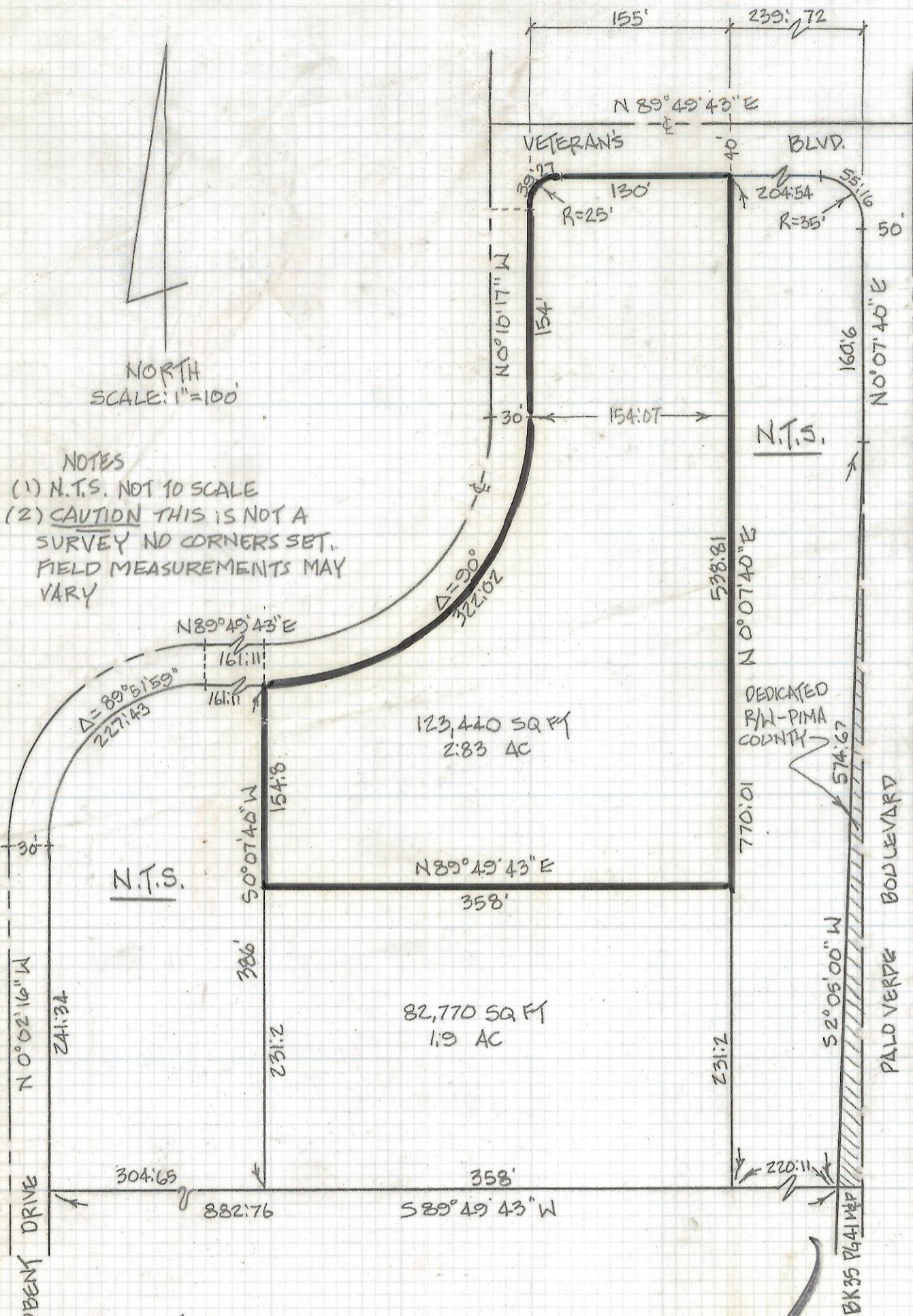


DISCLAIMER:

This unrecorded Record of Survey was donated to the City of Tucson. The City of Tucson provides this data for your personal use "as is." Additionally, the City of Tucson provides this information with the understanding that it is not guaranteed to be accurate, correct or complete and conclusions drawn from such information are the responsibility of the user.

NORTH
SCALE: 1"=100'

- NOTES
 (1) N.T.S. NOT TO SCALE
 (2) CAUTION THIS IS NOT A SURVEY NO CORNERS SET. FIELD MEASUREMENTS MAY VARY



SKETCH OF PROPOSED DIVISION

OF BLOCK 1 OF PALO VERDE - ASO INDUSTRIAL SUBDIVISION AS SHOWN IN BOOK 35 OF MAPS AND PLATS AT PAGE 41 IN THE OFFICE OF THE PIMA COUNTY RECORDER, PIMA COUNTY, ARIZONA.



ROBERT F. MELLEN
 REGISTERED LAND SURVEYOR
 TUCSON, ARIZONA
 JOB 89-54

Z-2018-106