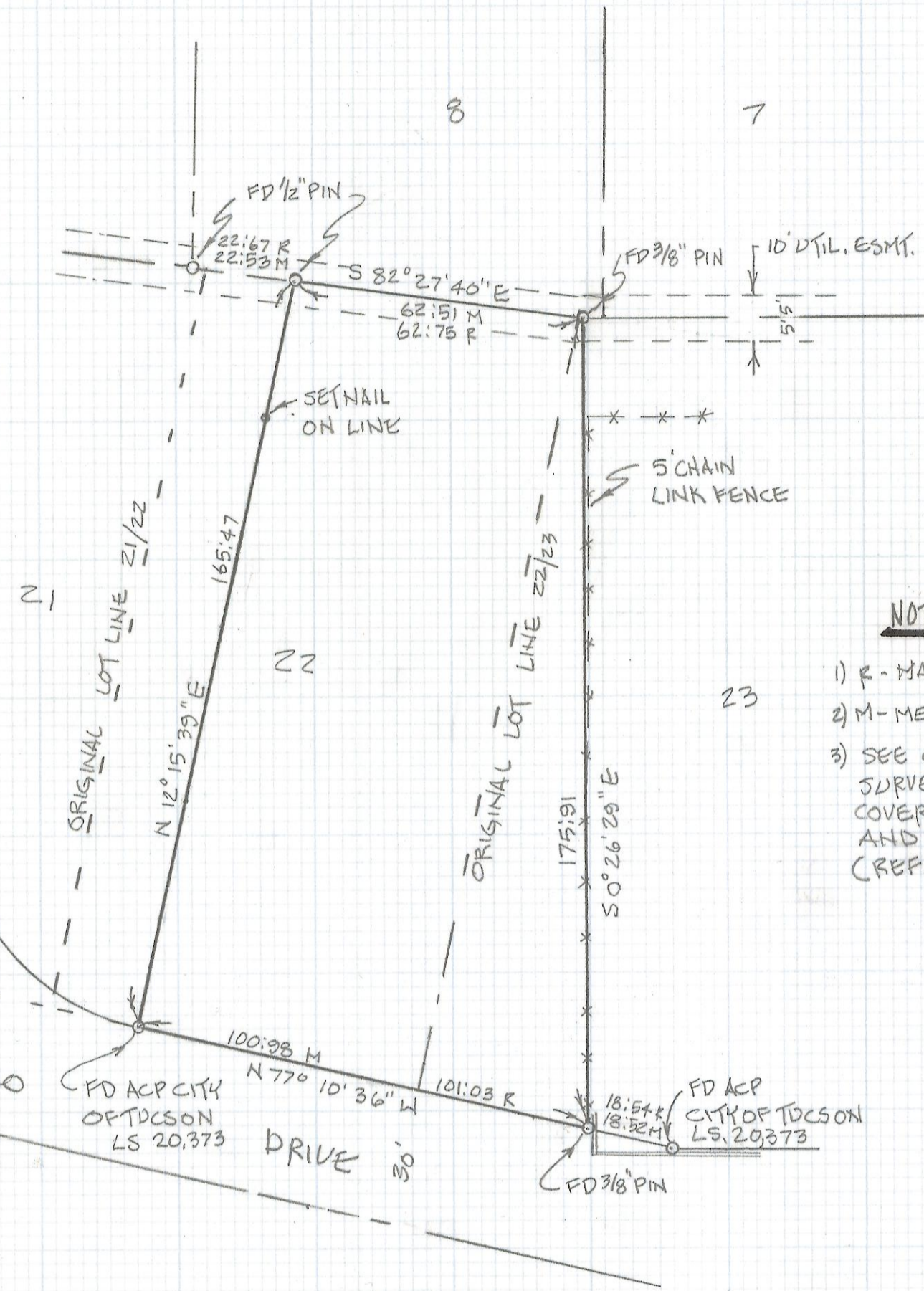
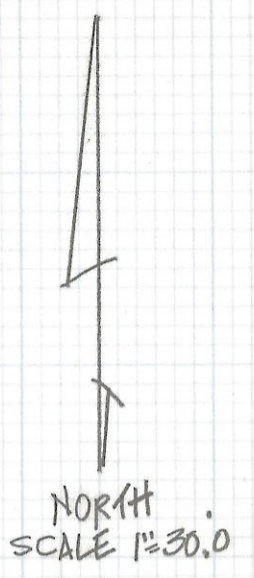


# **DISCLAIMER:**

**This unrecorded Record of Survey was donated to the City of Tucson. The City of Tucson provides this data for your personal use "as is." Additionally, the City of Tucson provides this information with the understanding that it is not guaranteed to be accurate, correct or complete and conclusions drawn from such information are the responsibility of the user.**



**NOTES**

- 1) R - MAP OR DEED RECORD
- 2) M - MEASURED
- 3) SEE CITY OF TUCSON RECORD OF SURVEY DATED JUNE 1989 COVERING PROBASCO DRIVE AND COOK STREET (REF. F.B. 1016 PG. 66 F.B. 1447 PG. 29-52)

RESULTS OF SURVEY

OF A PORTION OF LOTS 22 AND 23 OF PROBASCO SUBDIVISION #2 RECORDED IN BOOK 70 OF MAPS AND PLATS AT PAGE 77 IN THE OFFICE OF THE PIMA COUNTY RECORDER, PIMA COUNTY ARIZONA



Z-2018-116

ROBERT F. MELLEN  
 REGISTERED LAND SURVEYOR  
 TUCSON, ARIZONA  
 JOB # 89-71