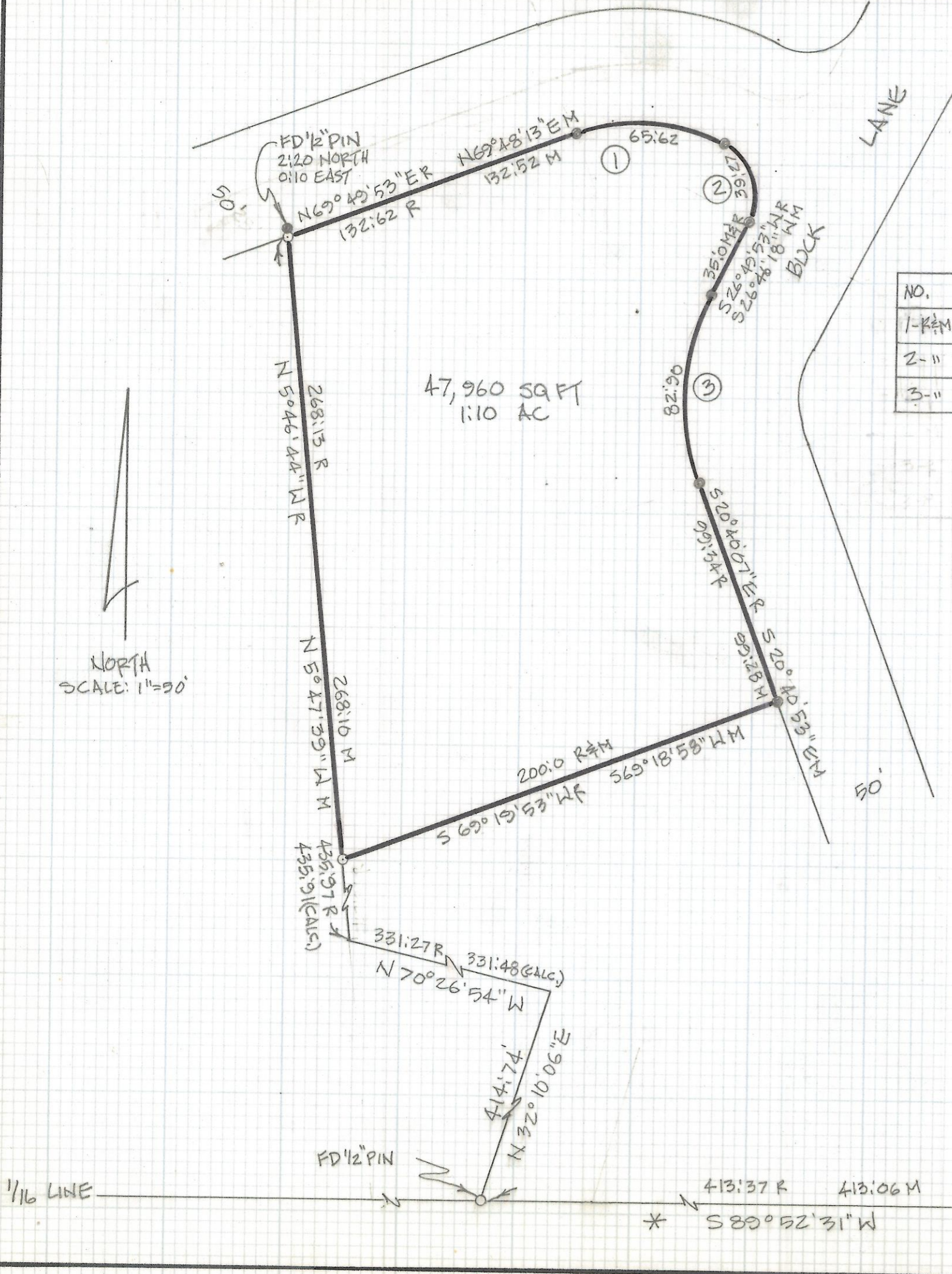


DISCLAIMER:

This unrecorded Record of Survey was donated to the City of Tucson. The City of Tucson provides this data for your personal use "as is." Additionally, the City of Tucson provides this information with the understanding that it is not guaranteed to be accurate, correct or complete and conclusions drawn from such information are the responsibility of the user.



47,960 SQ FT
1.10 AC

CURVE TABLE

NO.	DELTA	RADIUS	LEN.	TANG.	CHORD
1-1/2"	47°00'00"	80	65.62	34.79	63.8
2-1/2"	30°00'00"	25	39.27	29.00	35.36
3-1/2"	47°30'00"	100	82.90	44.0	80.55

NOTES

- 1) ♀ INDICATES 1/2" PIN MKD LS 4680 SET UNLESS NOTED
- 2) ♂ INDICATES 1/2" PIN MKD LS 4786 FOUND UNLESS NOTED
- 3) R - MAP OR DEED RECORD
- 4) M - MEASURED
- 5) * - BASIS OF BEARINGS 1/16 LINE PER DOC 6133 PG. 819

RESULTS OF SURVEY

OF A PORTION OF THE SOUTHWEST QUARTER OF THE NORTHEAST QUARTER OF SECTION 32 TOWNSHIP 13 SOUTH OF RANGE 13 EAST, GILA AND SALT RIVER BASE AND MERIDIAN, PIMA COUNTY, ARIZONA.



2-2018-117

ROBERT P. MELLEN
REGISTERED LAND SURVEYOR
TUCSON, ARIZONA
JOB 89-72

FD 1" CAPPED PIPE MKD 1/16
S.E. COR. OF S.W. 1/4 OF N.E. 1/4 OF 32-13-13

* S 89° 52' 31" W
413.37 R 413.06 M