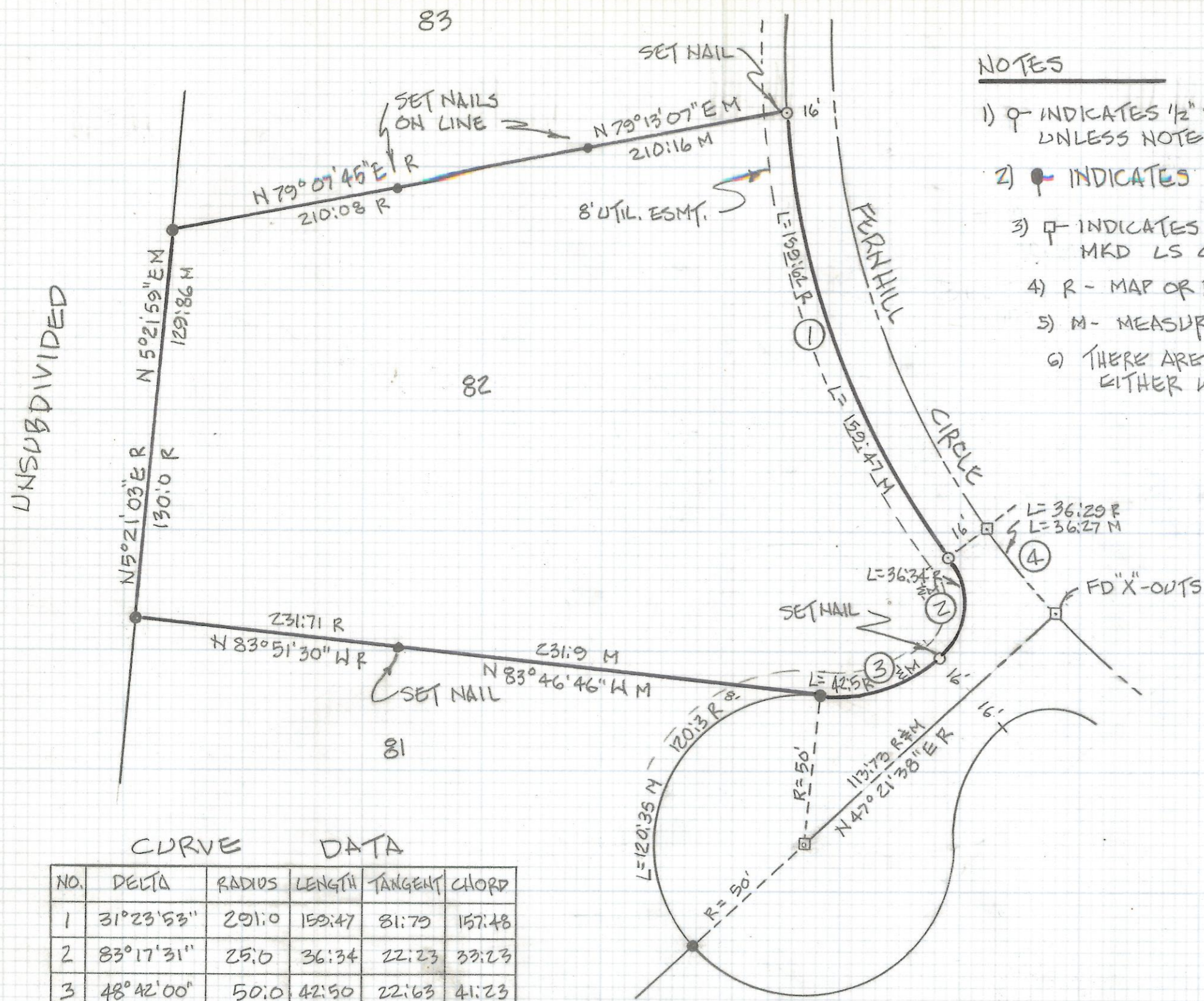


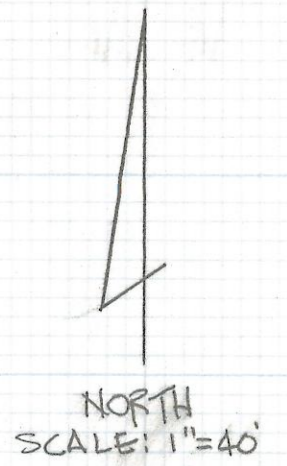
DISCLAIMER:

This unrecorded Record of Survey was donated to the City of Tucson. The City of Tucson provides this data for your personal use "as is." Additionally, the City of Tucson provides this information with the understanding that it is not guaranteed to be accurate, correct or complete and conclusions drawn from such information are the responsibility of the user.



NOTES

- 1) \circ INDICATES 1/2" PIN MKD LS 4680 SET UNLESS NOTED
- 2) \bullet INDICATES 5/8" PIN FOUND AND ACCEPTED
- 3) \square INDICATES 2" BRASS PLUG IN CONCRETE MKD LS 4785 FOUND
- 4) R - MAP OR DEED RECORD
- 5) M - MEASURED
- 6) THERE ARE NO SIGNIFICANT ENCROACHMENTS EITHER WAY ACROSS PROPERTY LINES.



RESULTS OF SURVEY

OF LOT 82 OF SABINO VISTA HILLS AS RECORDED IN BOOK 29 OF MAPS AND PLATS AT PAGE 40 IN THE OFFICE OF THE PIMA COUNTY RECORDER, PIMA COUNTY, ARIZONA.

CURVE DATA

NO.	DELTA	RADIUS	LENGTH	TANGENT	CHORD
1	31°23'53"	291.0	159.47	81.79	157.48
2	83°17'31"	25.0	36.34	22.23	33.23
3	48°42'00"	50.0	42.50	22.63	41.23
4	6°42'13"	310.0	36.27	18.16	36.25



Z-2018-118

ROBERT F. MELLEN
 REGISTERED LAND SURVEYOR
 TUCSON, ARIZONA
 JOB 89-73