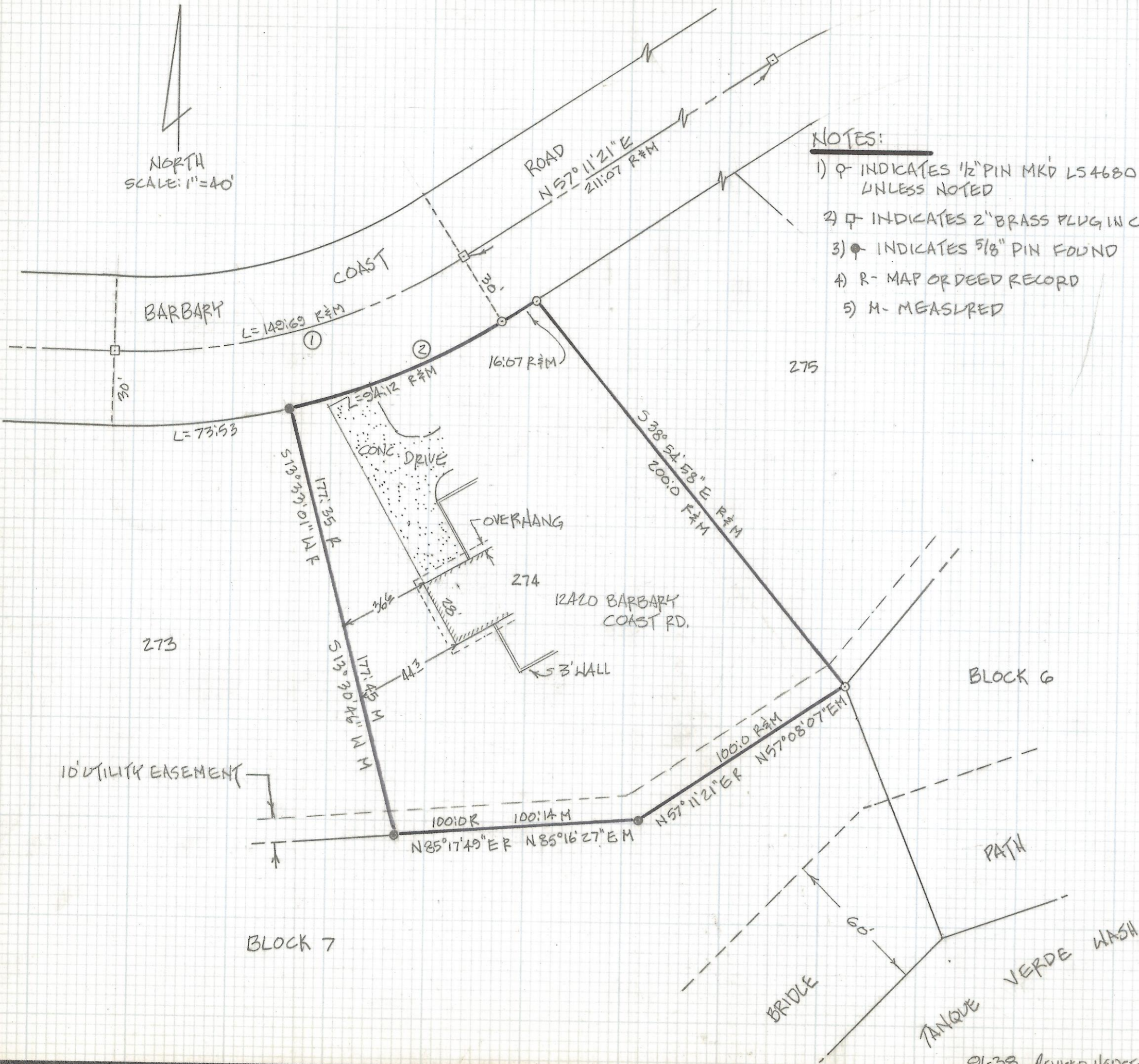


DISCLAIMER:

This unrecorded Record of Survey was donated to the City of Tucson. The City of Tucson provides this data for your personal use "as is." Additionally, the City of Tucson provides this information with the understanding that it is not guaranteed to be accurate, correct or complete and conclusions drawn from such information are the responsibility of the user.



CURVE		DATA			
NO.	DELTA	L	R	T	C
1-E	34° 17' 30"	149.69	250.11	77.16	147.47
2-R	19° 16' 07"	94.12	280.11	47.91	93.68



NOTES:

- 1) ♀ INDICATES 1/2" PIN MKD LS 4680 SET UNLESS NOTED
- 2) ♂ INDICATES 2" BRASS PLUG IN CONC. FOUND
- 3) ⚫ INDICATES 5/8" PIN FOUND
- 4) R- MAP OR DEED RECORD
- 5) M- MEASURED

RESULTS OF SURVEY

OF LOT 274 OF FORTY NINE COUNTRY CLUB ESTATES AS RECORDED IN BOOK 15 OF MAPS AND PLATS AT PAGE 39 IN THE OFFICE OF THE PIMA COUNTY RECORDER, PIMA COUNTY, ARIZONA.



Z-2018-120

ROBERT P. MELLEN
REGISTERED LAND SURVEYOR
TUCSON, ARIZONA
JOB 89-77