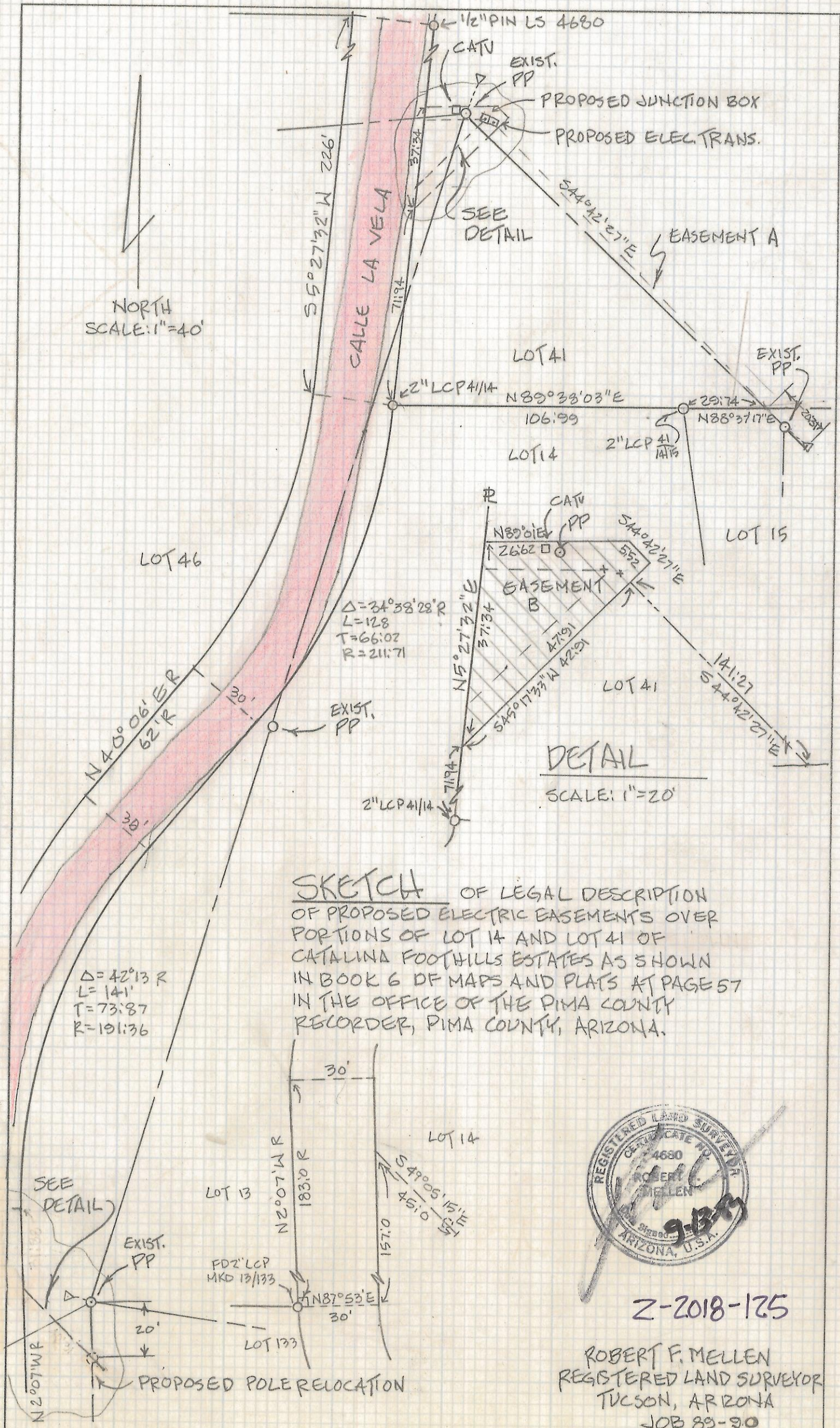


# **DISCLAIMER:**

**This unrecorded Record of Survey was donated to the City of Tucson. The City of Tucson provides this data for your personal use "as is." Additionally, the City of Tucson provides this information with the understanding that it is not guaranteed to be accurate, correct or complete and conclusions drawn from such information are the responsibility of the user.**

NORTH  
SCALE: 1"=40'



SKETCH OF LEGAL DESCRIPTION  
OF PROPOSED ELECTRIC EASEMENTS OVER  
PORTIONS OF LOT 14 AND LOT 41 OF  
CATALINA FOOTHILLS ESTATES AS SHOWN  
IN BOOK 6 OF MAPS AND PLATS AT PAGE 57  
IN THE OFFICE OF THE PIMA COUNTY  
RECORDER, PIMA COUNTY, ARIZONA.

DETAIL  
SCALE: 1"=20'



Z-2018-125

ROBERT F. MELLEN  
REGISTERED LAND SURVEYOR  
TUCSON, ARIZONA  
JOB 89-90