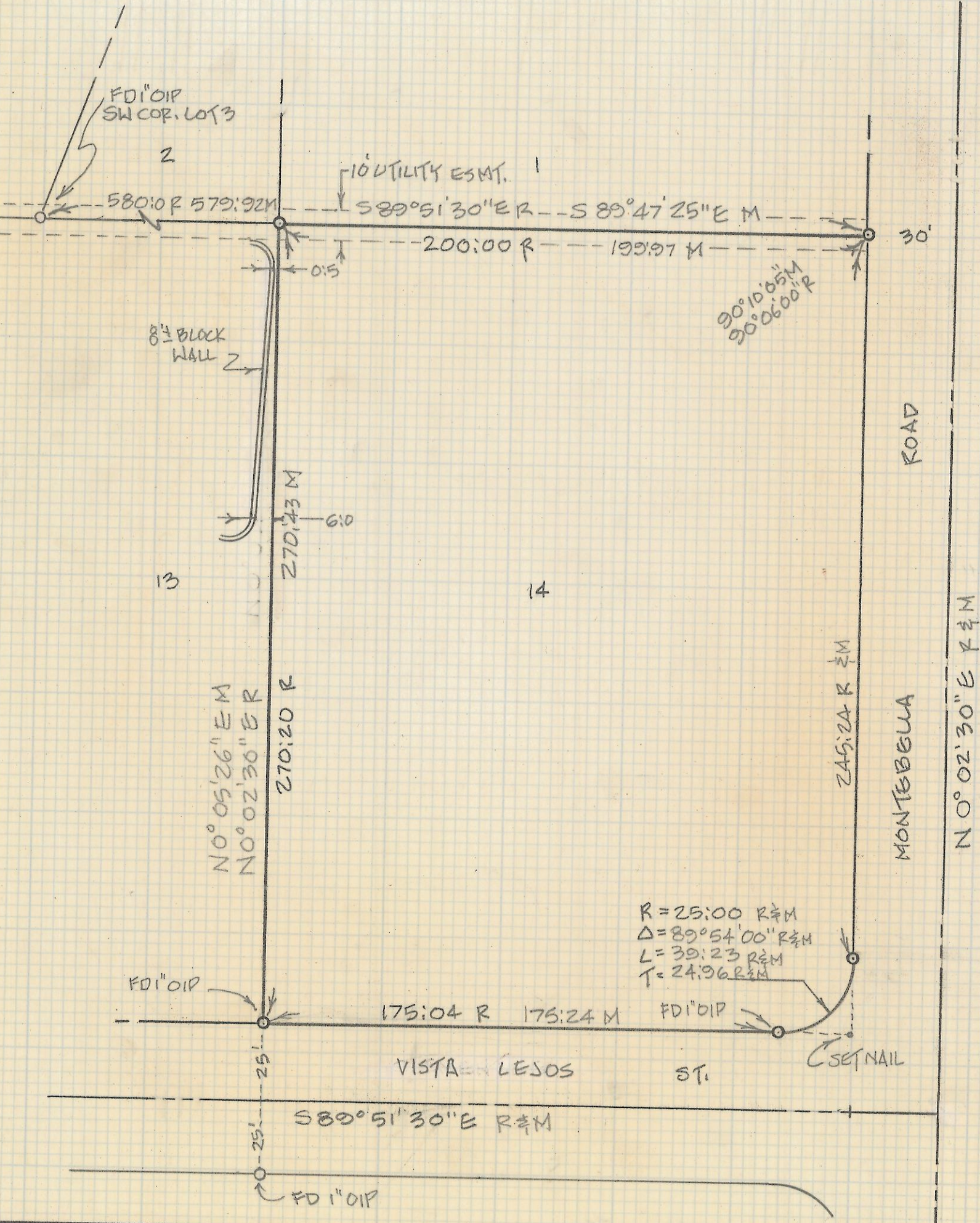


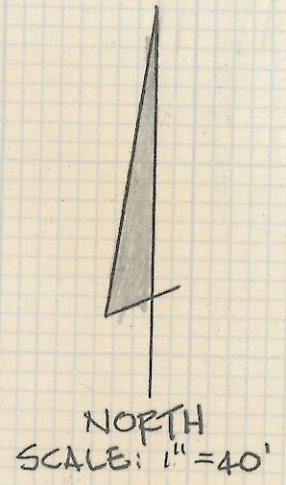
DISCLAIMER:

This unrecorded Record of Survey was donated to the City of Tucson. The City of Tucson provides this data for your personal use "as is." Additionally, the City of Tucson provides this information with the understanding that it is not guaranteed to be accurate, correct or complete and conclusions drawn from such information are the responsibility of the user.



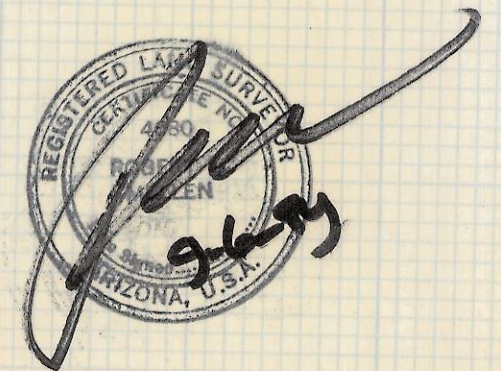
NOTES:

- 1) ϕ INDICATES 1/2" PIN MKD LS 4680 SET UNLESS NOTED
- 2) R - MAP OR DEED RECORD
- 3) M - MEASURED



RESULTS OF SURVEY

OF LOT 14 OF THE AMENDED PLAT OF LA COLINA ESTATES AS SHOWN IN BOOK 9 OF MAPS AND PLATS AT PAGE 112 IN THE OFFICE OF THE PIMA COUNTY RECORDER, PIMA COUNTY, ARIZONA.



ROBERT F. MELLEN
 REGISTERED LAND SURVEYOR
 TUCSON, ARIZONA
 JOB 89-94 Z-2018-127